

### PRODUCT SPECIFICATIONS

Elkay Pro Filtration® Bottle Filling Station & Single ADA Cooler Refrigerated, Ultra-Capacity Lead, Cyst, Particulate, Chlorine, Taste and Odor, plus Microplastics Reduction Filter. Top Mount Quick Change Filter. Chilling Capacity of 8.0 GPH (gallons per hour) of 50° F drinking water, based on 80° F inlet water and 90° F ambient, per ASHRAE 18 testing. Features shall include Antimicrobial\*\*, Automatic Filter Status Reset, Energy Savings, Filtered, Green Ticker™, Hands Free, Laminar Flow, Dedicated Bottle Filler Drain, Visual Filter Monitor, Quick Filter Change. Furnished with Flexi-Guard® Safety Bubbler. Stainless Alcove, Electronic Bottle Filler Sensor, Electronic Front and Side Bubbler Pushbar activation. Product shall be Wall Mount (On Wall), for Indoor applications, serving 1 station(s). Unit shall be certified to UL 399 and CAN/CSA C22.2 No.120

<b>Special Features:</b>	Antimicrobial, Automatic Filter Flush and Status Reset, Energy Savings, Filtered, Fleet Management, Green Ticker™, Hands Free, Laminar Flow, Real Drain, Top Mount Quick Change Filter, Stainless Alcove, Visual Filter Monitor
<b>Finish:</b>	Black with Stainless Steel Alcove
<b>Power:</b>	115V/60Hz
<b>Bubbler Style:</b>	Flexi-Guard® Safety Bubbler
<b>Activation by:</b>	Electronic Bottle Filler Sensor with Electronic Front and Side Bubbler Pushbar
<b>Mounting Type:</b>	Wall Mount (On Wall)
<b>Filter Capacity:</b>	10,000 gallons
<b>Chilling Capacity*:</b>	8.0 GPH
<b>Full Load Amps:</b>	5
<b>Rated Watts:</b>	370
<b>Dimensions (L x W x H):</b>	18-3/8" x 19" x 39-7/16"
<b>Approx. Shipping Weight:</b>	89 lbs.
<b>Installation Location:</b>	Indoor
<b>No. of Stations Served:</b>	1
*Based on 80° F inlet water & 90° F ambient air temp for 50° F chilled drinking water.	

### Special Note: One-Box Packaging.

- Faster Filter Changes: Filters are installed at the top of the unit, allowing for quick filter changes in seconds.
- Ultra-Capacity Filter Included: Elkay's 10,000-gallon filter is tested and certified to NSF/ANSI 42, 53 and 401 for lead, cyst, particulate class 1, chlorine, taste and odor, and microplastics reduction.
- Automatic Filter Recognition: FillSafe recognition recognizes new filter, flushes filter and updates LED status back to blue.
- Visual Filter Monitor: LED filter status indicator alerts to needed filter changes.
- Optional PlumbSMART™ Connected package reduces the total cost of ownership and tracks sustainability metrics with connected ezH2O bottle filling stations.
- Optional UV-C LED treatment at the dispense point disinfects water.

PART: \_\_\_\_\_ QTY: \_\_\_\_\_

PROJECT: \_\_\_\_\_

CONTACT: \_\_\_\_\_

DATE: \_\_\_\_\_

NOTES: \_\_\_\_\_

APPROVAL: \_\_\_\_\_



### Included with Product:

**Bottle Filler,  
Water Cooler,  
Ultra Capacity Filter**

### Ships in one box.

A Century of Tradition and Quality.

For more than 100 years, Elkay has been making innovative products and providing exceptional customer care. We take pride in offering plumbing products that make life easier, inspire change and leave the world a better place.

### PRODUCT COMPLIANCE

ADA & ICC A117.1

ASME A112.19.3/CSA B45.4

CAN/CSA C22.2 No. 120

FCC & ISED

NSF/ANSI 42, 53, 61 (Q≤1), 372 (lead free), 401

UL 399



Complies with ADA & ICC A117.1 accessibility requirements when installed according to the requirements outlined in these standards. Installation may require additional components and/or construction features to be fully compliant. Consult the local Authority Having Jurisdiction if necessary.

**5 Year Limited Warranty** on the refrigeration system of the unit.

Electrical components and water system are warranted for 12 months from date of installation. **Warranty pertains to drinking water applications only. Non-drinking water applications are not covered under warranty.**

[Warranty \(PDF\)](#)

*In keeping with our policy of continuing product improvement, Elkay reserves the right to change product specifications without notice. Please visit [elkay.com](http://elkay.com) for the most current version of Elkay product specification sheets. This specification describes an Elkay product with design, quality, and functional benefits to the user. When making a comparison of other producers' offerings, be certain these features are not overlooked.*

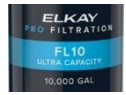


- Optional sediment prefilter.
- Optional total PFAS reduction filter.
- Energy-savings mode reduces energy consumption.
- LED lighting: Low-energy LED light encourages use, assists with filling dark bottles and illuminates in dark hallways.
- Fill rate is 1.1 GPM: Laminar flow provides clean fill with minimal splash. Real drain system eliminates standing water in basin.
- Uses standard Elkay rough in.

\*\*Antimicrobial claims are in reference to components manufactured with antimicrobial agents, helping to provide clean, stain- and odor-free surfaces.



### COOLING SYSTEM:

- Compressor: Hermetically-sealed, reciprocating type, single phase. Sealed-in lifetime lubrication.
- Condenser: Fan cooled, copper tube with aluminum fins. Fan motor is permanently lubricated.
- Cooling Unit: Combination tube-tank type. Continuous copper tubing with is fully insulated with EPS foam that meets UL requirements for self-extinguishing material.
- Refrigerant Control: Refrigerant R-134a is controlled by accurately calibrated capillary tube.
- Temperature Control: Easily accessible enclosed adjustable thermostat is factory preset. Requires no adjustment other than for altitude requirements.


### Filtration & Water Quality Options

FL10 (standard)	Elkay Pro Filtration® 10,000 gallon Ultra-capacity Lead certified to NSF/ANSI 42, 53 and 401 for lead, microplastics, cysts, Class 1 particulates, chlorine taste and odor, asbestos and turbidity reduction	
-FLP4	Elkay Pro Filtration® 4,000 gallon Total PFAS* and Lead certified to NSF/ANSI 42, 53 and 401 for total PFAS, lead, cyst, particulate class 1, chlorine, taste and odor, and microplastics reduction	
-FSR5	Elkay Pro Filtration® Sediment Prefilter certified to NSF/ANSI 42 and 372 for material safety	
-UV	Integrated Elkay Pro Filtration® UV	Not Shown

### Colors & Configurations

<a href="#">LKAPREZM</a>	Elkay Cane Apron for EZ Black <a href="#">Spec Sheet (PDF)</a>	
<a href="#">MLP100</a>	In-wall Carrier for Single-station On-wall Bottle Fillers Coolers & Fountains <a href="#">Spec Sheet (PDF)</a>	

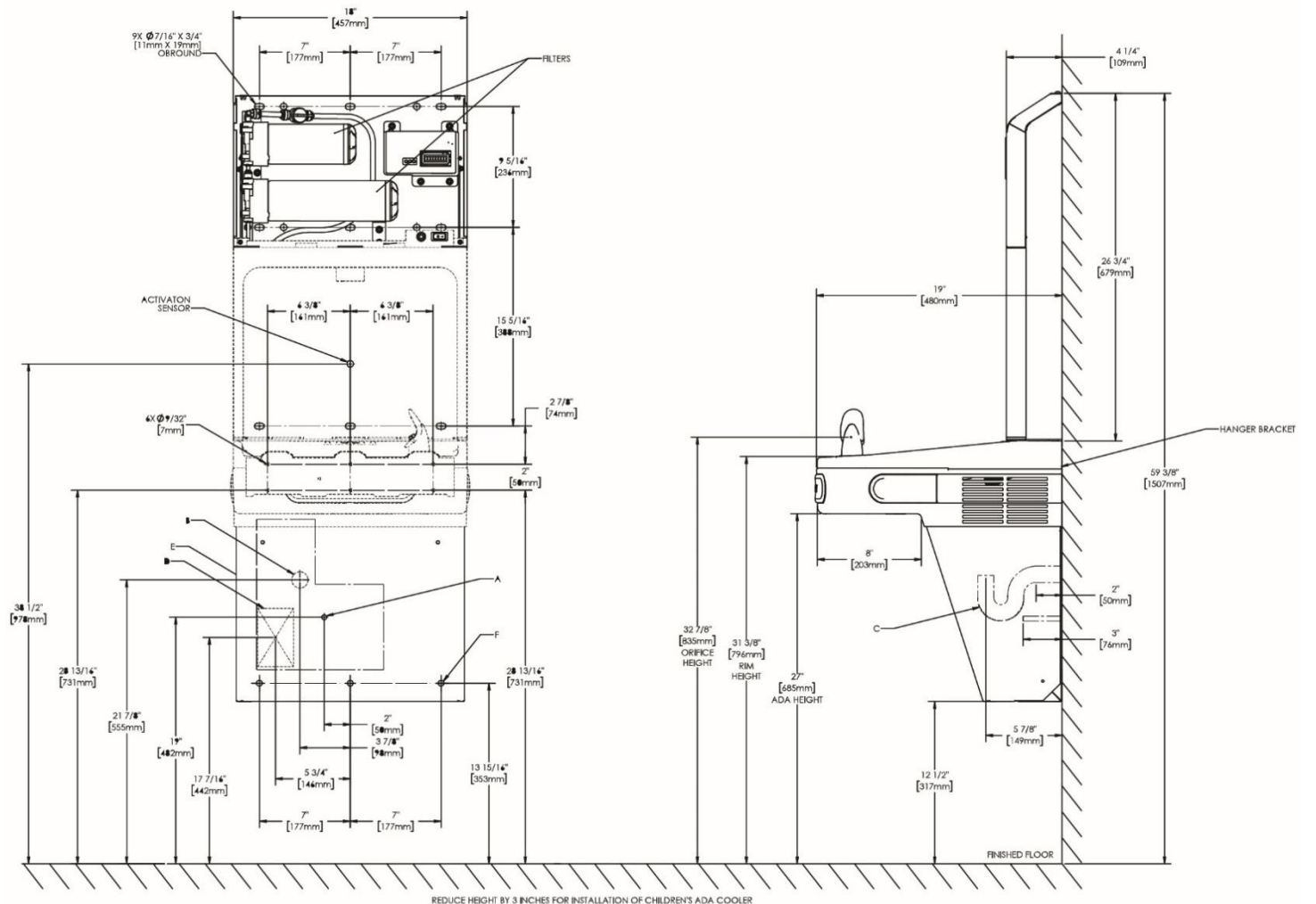
### Packages

-W1	PlumbSMART™ Connected Package Includes Zurn Elkay Connected Gateway to Connect with All Bottle Fillers within a 1,000' Radius. Provides Real Time Filter Status, Dispense Volume, Bottle Count, Usage Rates / Patterns, Remote/Scheduled Line Flush, Aggregate Bottles Saved	
-----	--	---

In keeping with our policy of continuing product improvement, Elkay reserves the right to change product specifications without notice. Please visit [elkay.com](http://elkay.com) for the most current version of Elkay product specification sheets. This specification describes an Elkay product with design, quality, and functional benefits to the user. When making a comparison of other producers' offerings, be certain these features are not overlooked.

### IMPORTANT! INSTALLER PLEASE NOTE:

The grounding of electrical equipment such as telephone, computers, etc; to water lines is a common procedure. This grounding may be in the building or may occur away from the building. This grounding can cause electrical feedback into a water cooler, creating an electrolysis which causes a metallic taste or causes an increase in the metal content of the water. This condition is avoidable by using the proper materials as indicated below. The drain fittings which are provided by the installer should also be plastic to electrically isolate the cooler from the building plumbing system.



#### LEGEND:

A = Recommended Water Supply location. Shut-off Valve (not furnished) to accept 3/8" O.D. unplated copper tube. Up to 3" (76mm) maximum out from wall.  
B = Recommended Waste Outlet location. To accommodate 1-1/4" nominal drain. Drain stub 2" (51mm) out from wall.  
C = 1-1/4" trap (not furnished).  
D = Electrical Supply (3) Wire Recessed Duplex Outlet.  
E = Ensure proper ventilation by maintaining 6" (152mm) minimum clearance from cabinet louvers to wall.  
F = 7/16" (11mm) Bolt Holes for fastening to wall.  
Note: New Installations Must Use Ground Fault Circuit Interrupter (GFCI).

In keeping with our policy of continuing product improvement, Elkay reserves the right to change product specifications without notice. Please visit [elkay.com](http://elkay.com) for the most current version of Elkay product specification sheets. This specification describes an Elkay product with design, quality, and functional benefits to the user. When making a comparison of other producers' offerings, be certain these features are not overlooked.