

FEATURES & BENEFITS

CONSTRUCTION

Rugged ADA accessible 18 gauge Type 304 Stainless Steel swirl design bowls, 14 gauge Type 304 Stainless Steel brackets and bottle filler, and vandal-resistant bottom plates provides a long lasting unit with added peace of mind.

BOTTLE FILLER

Vandal-resistant, 14-gauge Type 304 stainless steel bottle filler housing with push button operation and 1 gpm (3.78 L) laminar flow.

VANDAL RESISTANT

The bubbler heads, push buttons, round bowls, drain strainers and bottom plates are locked in place, discouraging unwanted vandal tampering.

BUBBLER HEADS

Polished chrome-plated brass bubbler heads with integral laminar flow prevents splashing while providing a superior flow pattern. The integral 11/16" basin shank and stainless anti-rotational roll pin add vandal resistance strength. Shielded, angled stream opening provides a steady, sanitary source of drinking water at .45 gpm.

FOUNTAIN VALVES

The push-button activated valves have all stainless steel bodies, with chrome plated brass push button assemblies which allow for front access to water stream adjustment, water control cartridge, and water supply strainer replacement without having to go through the bottom plate. Operating pressure range of 30 to 90 psi (2.1 to 6.2 bar).

MOUNTING

Galvanized frame and 10 gauge surface plate provide the maximum mounting strength, and allows front access of P-trap and stop.

OPTIONS

- Water Filter: Model 6480 filter kit with 3000 gallon carbon block filter, filter head, and mounting bracket.
- Bottle Filler Stand: Model BTL1001, add-on stainless steel stand to place bottle on when 1920 bottle filler is used.

For more information, visit www.hawsco.com or call (888) 640-4297.



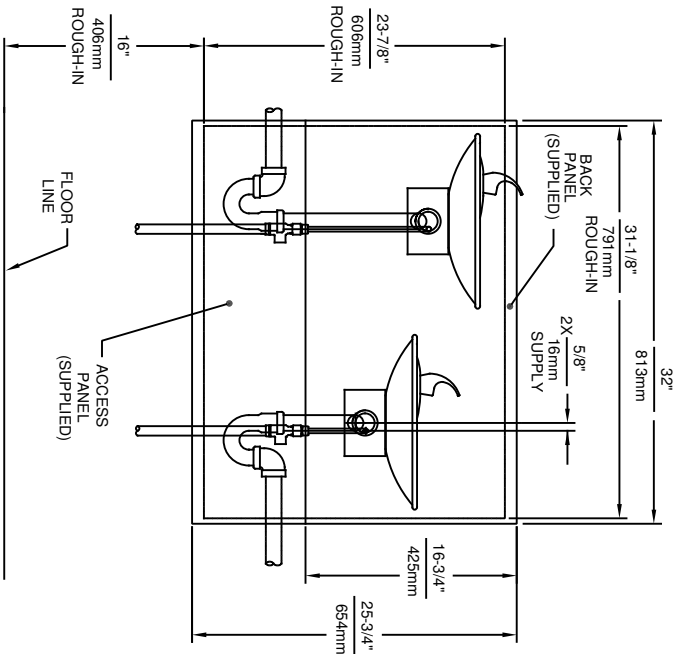
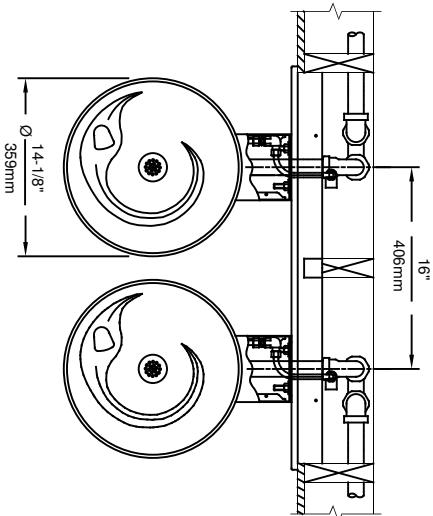
SPECIFICATIONS

Model 1011MSP Hi-Lo ADA vandal-resistant wall-mounted drinking fountain and bottle filler shall include dual 18-gauge Type 304 Stainless Steel satin finish basins with integral swirl design, 14 gauge Type 304 Stainless Steel wall brackets and bottle filler bracket, in-wall mounting frame with lower access panel allowing for front access of P-trap and stop, 100% lead-free waterways, vandal-resistant push-button operated stainless steel valves with front accessible cartridge and flow adjustment, polished chrome plated brass vandal resistant bubbler heads with integral laminar anti-squirt flow, 1gpm (3.78L) laminar flow bottle filler with in-wall 3/16" thick steel mounting plate, chrome-plated brass vandal-resistant waste strainers, high and low fountain mounting levels, stainless steel satin finish back panels, and 1-1/4" O.D. (3.2 cm) waste pipes.

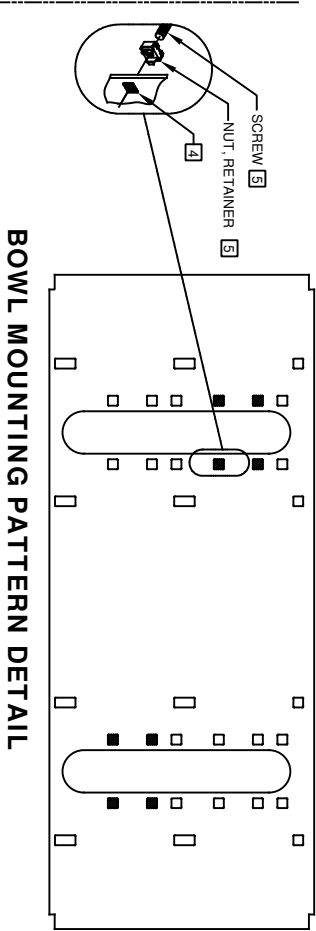
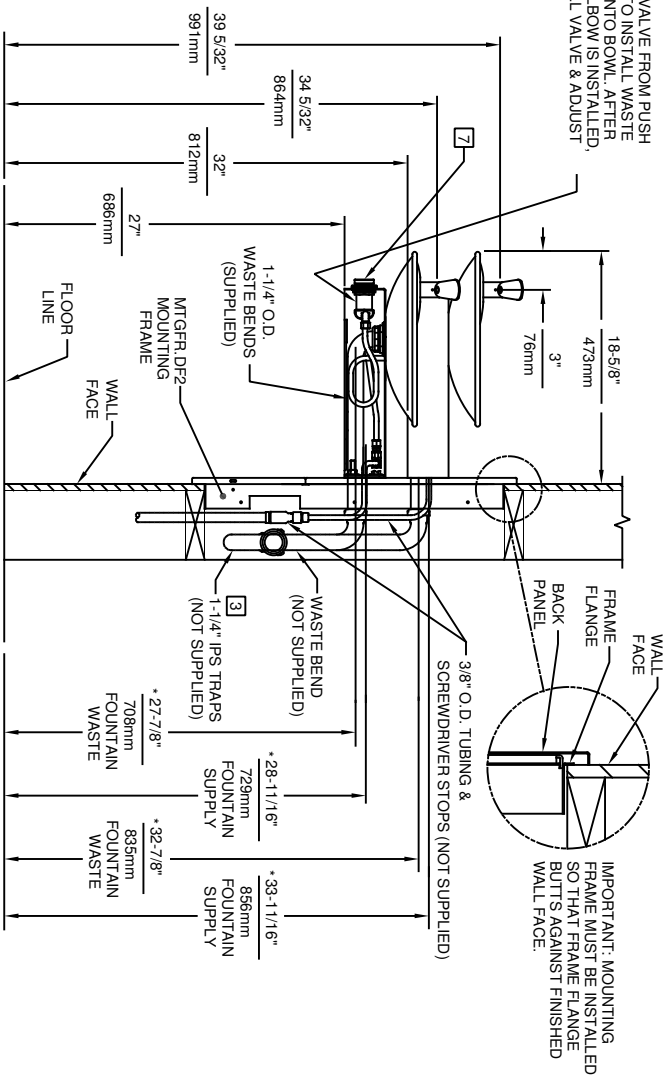
APPLICATIONS

Perfect for either public or private indoor/outdoor settings, Model 1011MSP is a great fit in areas where aesthetics are important to the overall appeal of the architecture. This series is precisely mounted, making it a nice addition to any surrounding. Beautiful satin finish helps to maintain the fountains overall appeal so it always remains looking as new as it did when it was installed. Specifically, this type of wall mounted drinking fountain may be placed in settings such as: schools and other locations in and around office buildings where the temperature remains above freezing. Model meets all current Federal Regulations for the disabled including those in the Americans with Disabilities Act. Haws manufactures drinking fountains, faucets and electric water coolers to be lead-free by all known definitions including NSF/ANSI/CAN 61-Section 9, NSF/ANSI/CAN 372, California Proposition 65, and the Federal Safe Drinking Water Act. Product is compliant to California Health and Safety Code 116875 (AB 1953-2006), and 116876 (AB 100) "NSF/ANSI/CAN 61: Q ≤ 1".





REMOVE VALVE FROM PUSH BUTTUN TO INSTALL WASTE ELBOW ONTO BOWL. AFTER WASTE ELBOW IS INSTALLED, REINSTALL VALVE & ADJUST FLOW.



NOTES:

- 1 HOLD ROUGH-IN DIMENSIONS ±1/8" (3.2mm).
- 2 WHEN INSTALLING THIS UNIT, LOCAL, STATE, OR FEDERAL CODES SHOULD BE ADHERED TO FOR DIMENSIONS (LOCATIONS), WASTE AND SUPPLY REQUIREMENTS OTHER THAN SHOWN.
- 3 INSTALLER MUST PROVIDE TRAP FOR PROPER INSTALLATION.
- 4 HOLE COMBINATION SHOWN BELOW IS FOR USE WITH LOW FOUNTAIN ON THE RIGHT AND HIGH FOUNTAIN ON THE LEFT. USE OPPOSITE HOLES FOR HIGH ON RIGHT AND LOW ON LEFT.
- 5 TO CHANGE FOUNTAIN MTG. SCREW LOCATIONS: FIRST REMOVE SCREWS AND THEN SQUEEZE CLIPS ON NUT RETAINER TO POP OUT. SNAP INTO NEW POSITIONS FROM BACKSIDE AND RE-ASSEMBLE SCREWS.
- 6 IMPORTANT: A L.H. LOW (OPTIONAL) CONFIGURATION WILL REQUIRE A DIFFERENT BACK PANEL AND THE WASTE AND SUPPLY DIMENSIONS SHOWN (?) MUST BE REVERSED.
- 7 REFER TO 5874 SERIES OPERATION AND MAINTENANCE MANUAL FOR PUSH BUTTUN AND VALVE INSTALLATION/MAINTENANCE INSTRUCTIONS.

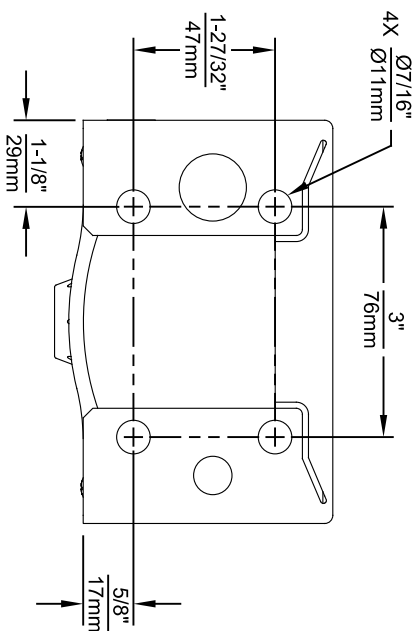
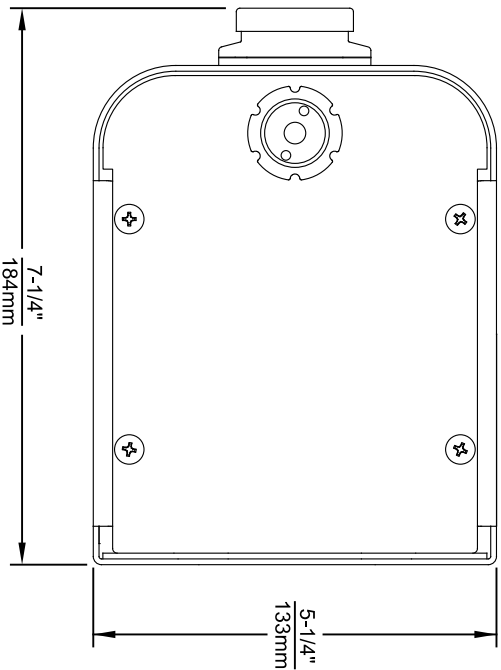
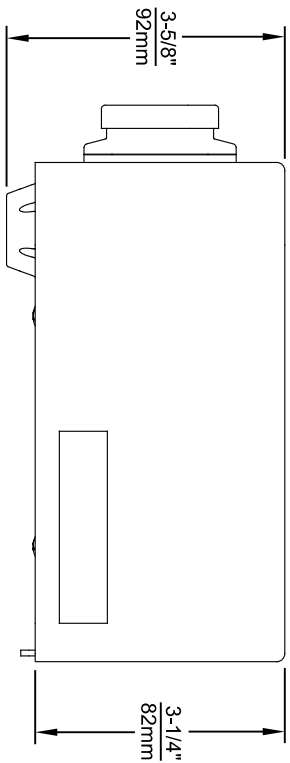
BOWL MOUNTING PATTERN DETAIL

Haws

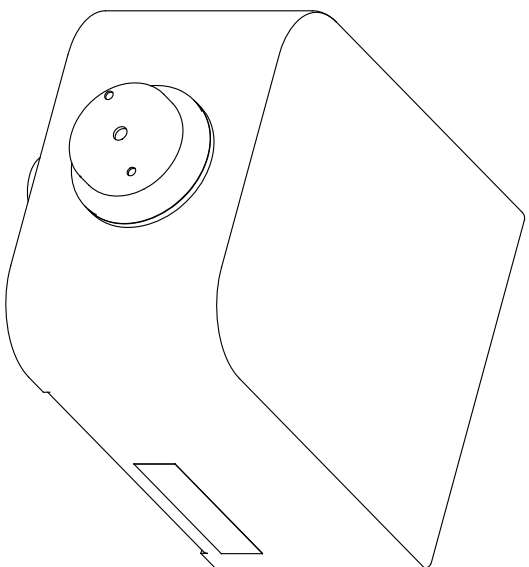
1459 KLEPPE LANE
 SPARKS, NEVADA, 89431
 (775) 359-4712 FAX (775) 359-7424
 E-MAIL: HAWS@HAWSCO.COM
 WEBSITE: WWW.HAWSCO.COM

ECN NO. REVISED PERBY: MODEL(S)
 ECN: 5124 VWC 1011HPPSMS/1011MS
 DRAWN: DATE: CHK'D: DRINKING FOUNTAIN
 PM 08/02/99 VWC
 APPROVED: DATE: SCALE: 1:16 DRAWING TYPE: INSTALLATION
 EV 07/06/17

PART NUMBER 0002076519.D
 REVISION 11



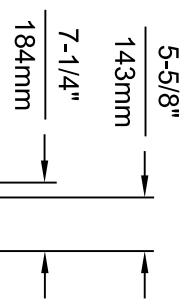
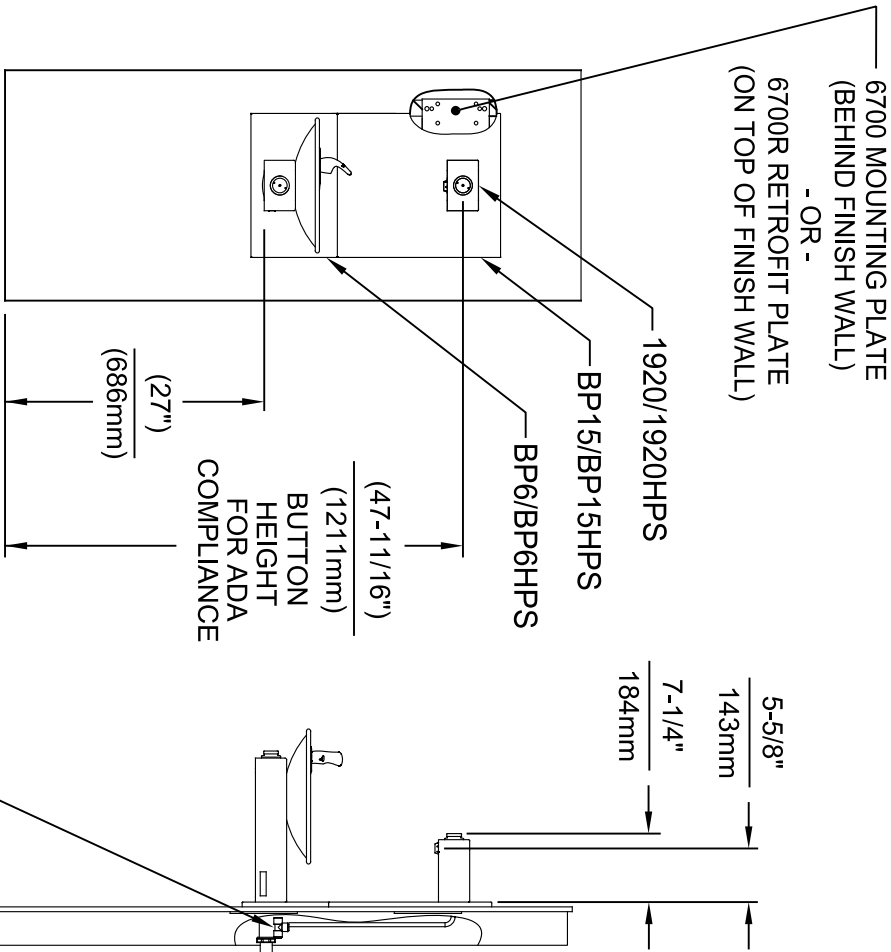
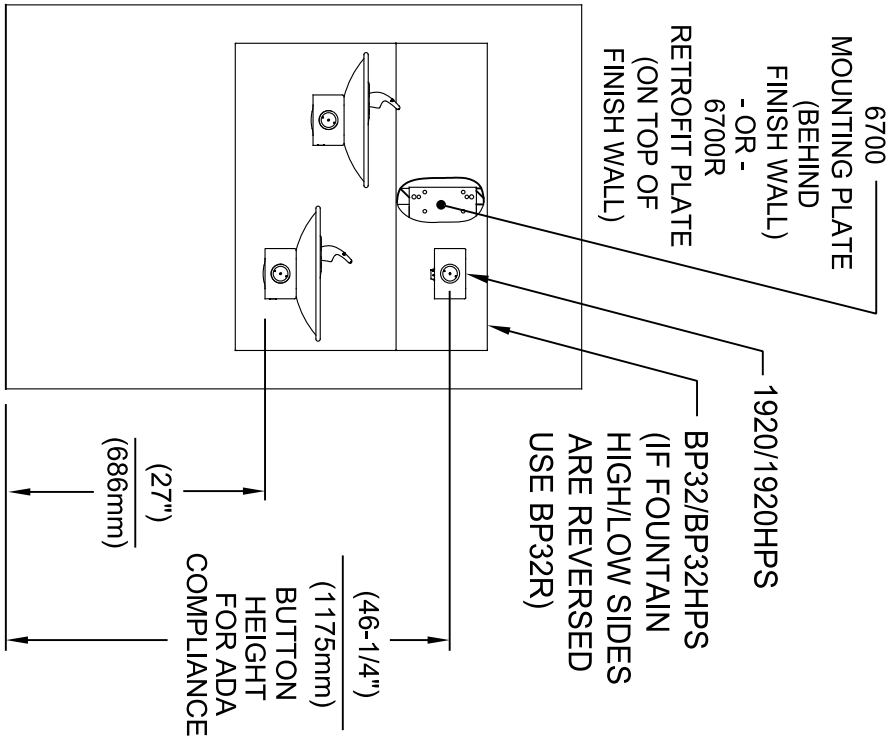
1920 SERIES MOUNTING HOLE LOCATIONS
(3/8"-16 UNC MOUNTING HARDWARE NOT SUPPLIED)



NOTES:

1. SEE SHEETS 2 THRU 7 FOR BOTTLE FILLER ADULT ADA HEIGHT APPLICATIONS AND SHEET 8 FOR CHILD ADA HEIGHT APPLICATIONS.
2. WHEN INSTALLING THIS UNIT, LOCAL, STATE OR FEDERAL CODES SHOULD BE ADHERED TO FOR INSTALLATION LOCATIONS, WASTE & SUPPLY REQUIREMENTS OTHER THAN SHOWN.

| | | | |
|---|--------------------------------|--|---------------|
|  | | 1455 KLEPPLELANE SPARKS, NEVADA 89431 (775) 359-4712 FAX (775) 359-7424 E-MAIL: HAWS@HAWSCO.COM WEBSITE: WWW.HAWSCO.COM | |
| EGN NO. REVISED PER BY: FV 5081 ECN: 5972 DRAWN: DS DATE: 05/25/16 DS JC | MODEL(S) 1920/1920HPS/1920W | SCALE: N/A DRAWING TYPE: | INSTALLATION: |
| APPROVED: FV DATE: 04/19/24 | PART NUMBER 0510000490.D | SIZE: A1 | SHEET: 1 OF 8 |

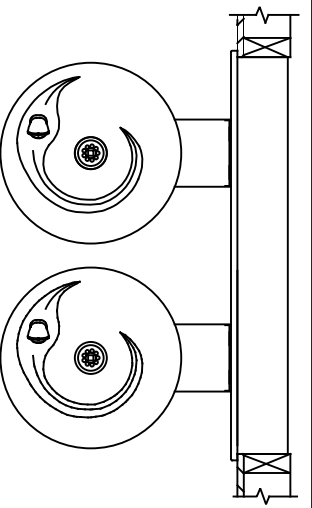


INSTALLATION ABOVE HAWS 1011 & H1011.8 SERIES

INSTALLATION ABOVE HAWS 1001 & H1001.8 SERIES

* IF YOUR FOUNTAIN IS THIS STYLE USE THESE DIMENSIONS

- SEE SEPARATE INSTALLATION DRAWINGS FOR MOUNTING PLATES AND BACK PANELS (SHOWN FOR REFERENCE - NOT SUPPLIED).
- WHEN INSTALLING THIS UNIT, LOCAL, STATE OR FEDERAL CODES SHOULD BE ADHERED TO FOR INSTALLATION LOCATIONS, WASTE & SUPPLY REQUIREMENTS OTHER THAN SHOWN.

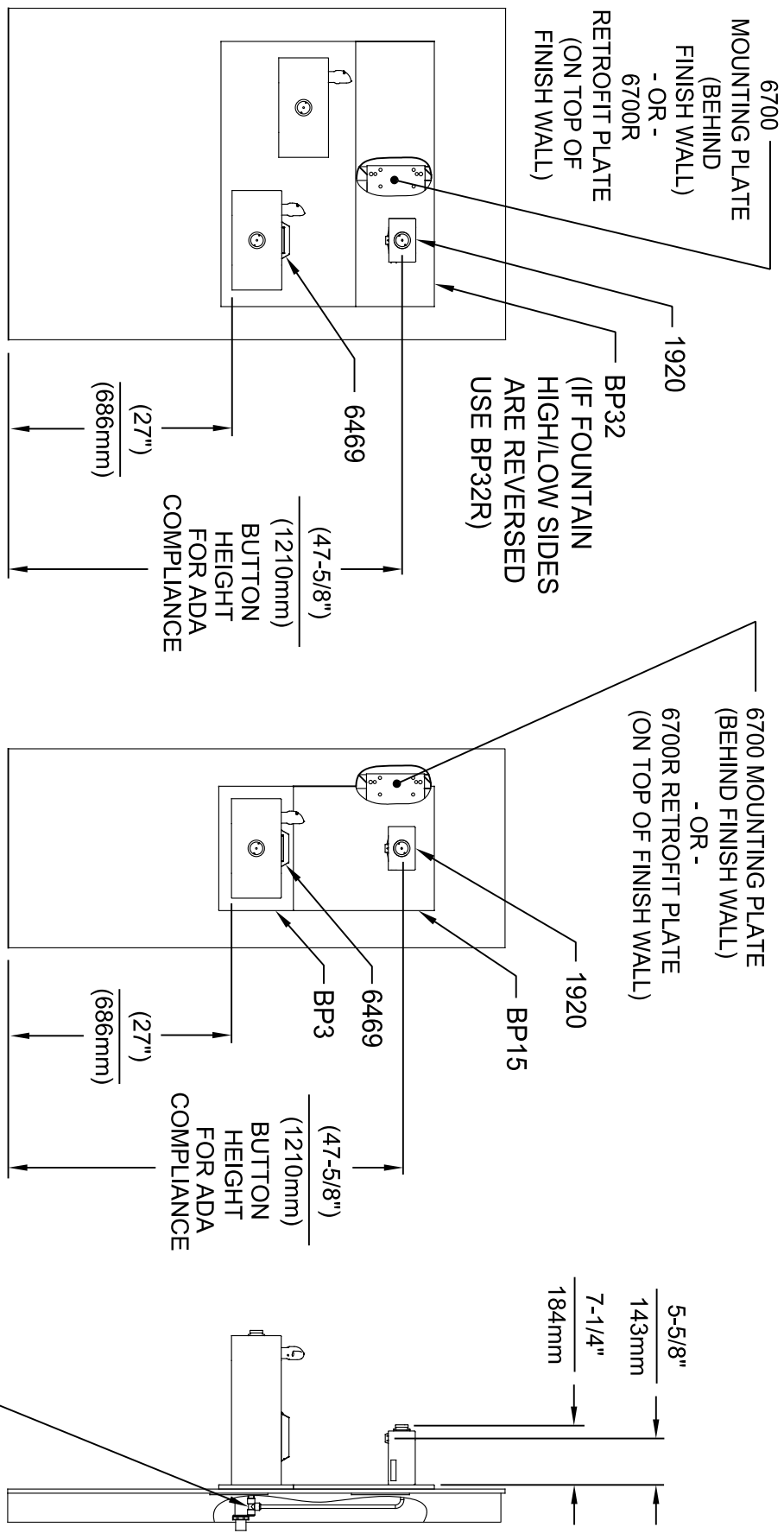


3/8" O.D. SUPPLY TUBING AND 3/8" O.D. PUSH-IN TEE SUPPLIED. (CONNECT TO FOUNTAIN SUPPLY LINE)

Haws
Since 1906

1455 KLEPPLE LANE
SPARKS, NEVADA 89431
(775) 359-4712 FAX (775) 359-7424
E-MAIL: HAWS@HAWS.CO.COM
WEBSITE: WWW.HAWS.CO.COM

| | | | | | |
|-------------------------|---------------------------|---------------|--------------|----------|---------------|
| EGN NO. REVISED PER BY: | MODEL(S) | SCALE | DATE | DATE | DATE |
| 5081 FV | 1920/1920HPS/1920W | N/A | 04/19/24 | 01/30/17 | 01/30/17 |
| DRAWN: JC | CHK'D: JC | DRAWING TYPE: | INSTALLATION | SIZE: A1 | SHEET: 2 OF 8 |
| REV. 12 | PART NUMBER: 0510000490.D | | | | |

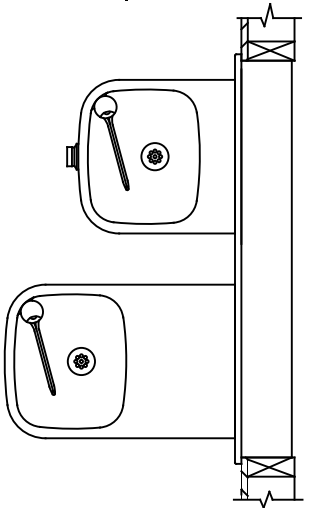


INSTALLATION ABOVE HAWS 1119 & H1119.8 SERIES

**INSTALLATION ABOVE HAWS 1109 & H1109.8 SERIES
SEE SHEET 8 FOR INSTALLATION AT CHILD HEIGHT**

* IF YOUR FOUNTAIN IS THIS STYLE USE THESE DIMENSIONS

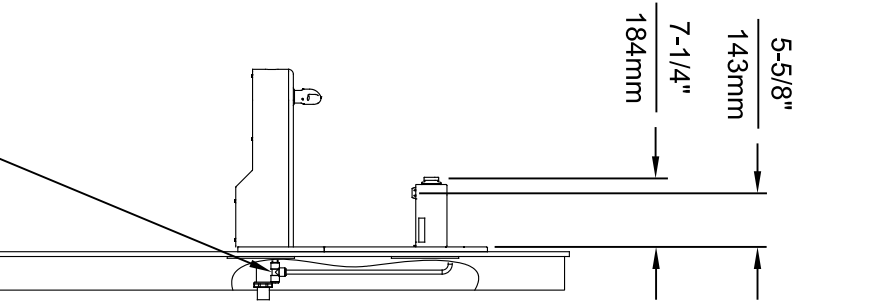
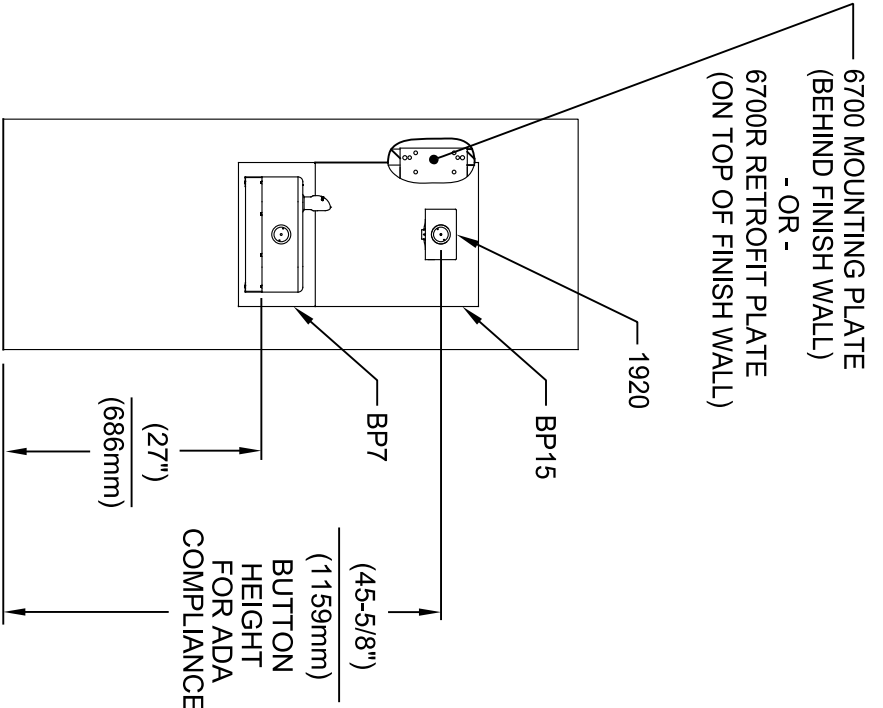
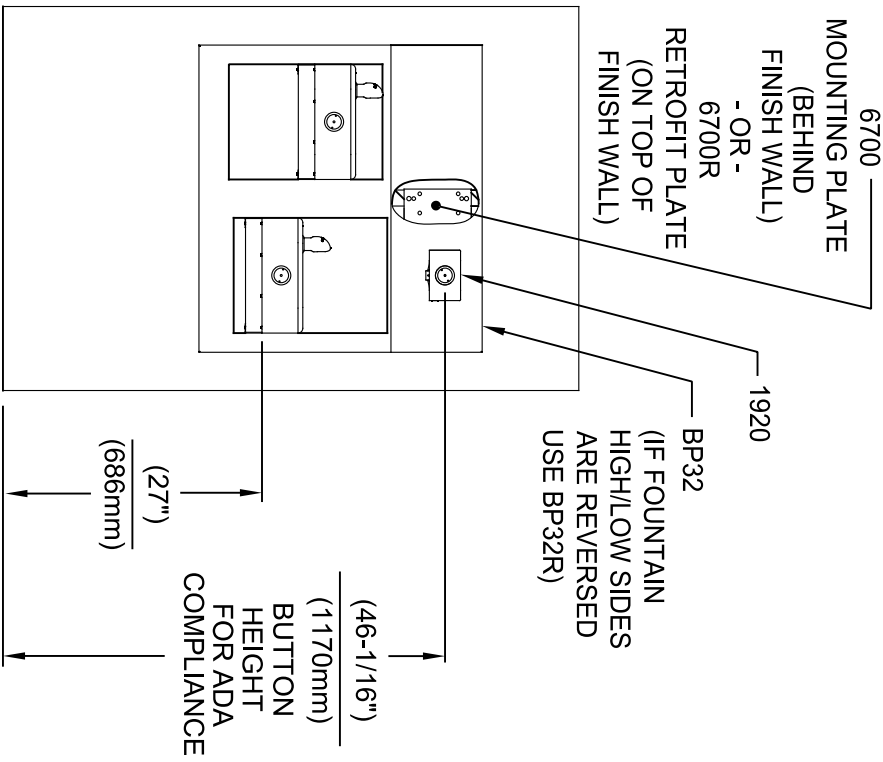
1. SEE SEPARATE INSTALLATION DRAWINGS FOR MOUNTING PLATES AND BACK PANELS (SHOWN FOR REFERENCE - NOT SUPPLIED).
2. WHEN INSTALLING THIS UNIT, LOCAL, STATE OR FEDERAL CODES SHOULD BE ADHERED TO FOR INSTALLATION LOCATIONS, WASTE & SUPPLY REQUIREMENTS OTHER THAN SHOWN.



Haws
Since 1906

1455 KLEPPLE LANE
SPARKS, NEVADA 89431
(775) 359-4712 FAX (775) 359-1424
E-MAIL: HAWS@HAWSCO.COM
WEBSITE: WWW.HAWSCO.COM

| | | | | | | | | |
|-------------|-----------------|--------------------|---------------|---------------|-------|------|--------|--------|
| EGN NO. | REVISED PER BY: | MODEL(S) | SCALE | DATE | DATE | DATE | DATE | DATE |
| 5081 | FV | 1920/1920HPS/1920W | N/A | 04/19/24 | | | | |
| DRAWN: | DATE: | CHK'D: | DRAWING TYPE: | INSTALLATION: | SIZE: | A1 | SHEET: | 3 OF 8 |
| ML | 01/30/17 | JC | | | | | | |
| APPROVED: | FV | | | | | | | |
| PART NUMBER | 0510000490.D | REVISION | 12 | | | | | |

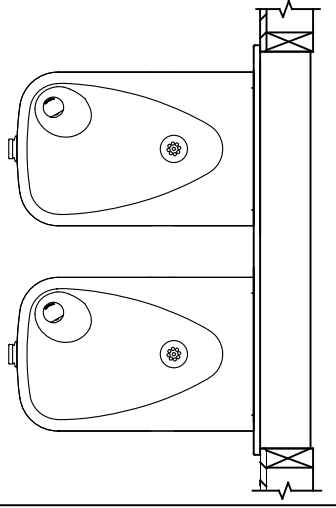


INSTALLATION ABOVE HAWS 1117L & H1117.8 SERIES

INSTALLATION ABOVE HAWS 1107L & H1107.8 SERIES SEE SHEET 8 FOR INSTALLATION AT CHILD HEIGHT

* IF YOUR FOUNTAIN IS THIS STYLE USE THESE DIMENSIONS

1. SEE SEPARATE INSTALLATION DRAWINGS FOR MOUNTING PLATES AND BACK PANELS (SHOWN FOR REFERENCE - NOT SUPPLIED).
2. WHEN INSTALLING THIS UNIT, LOCAL, STATE OR FEDERAL CODES SHOULD BE ADHERED TO FOR INSTALLATION LOCATIONS, WASTE & SUPPLY REQUIREMENTS OTHER THAN SHOWN.

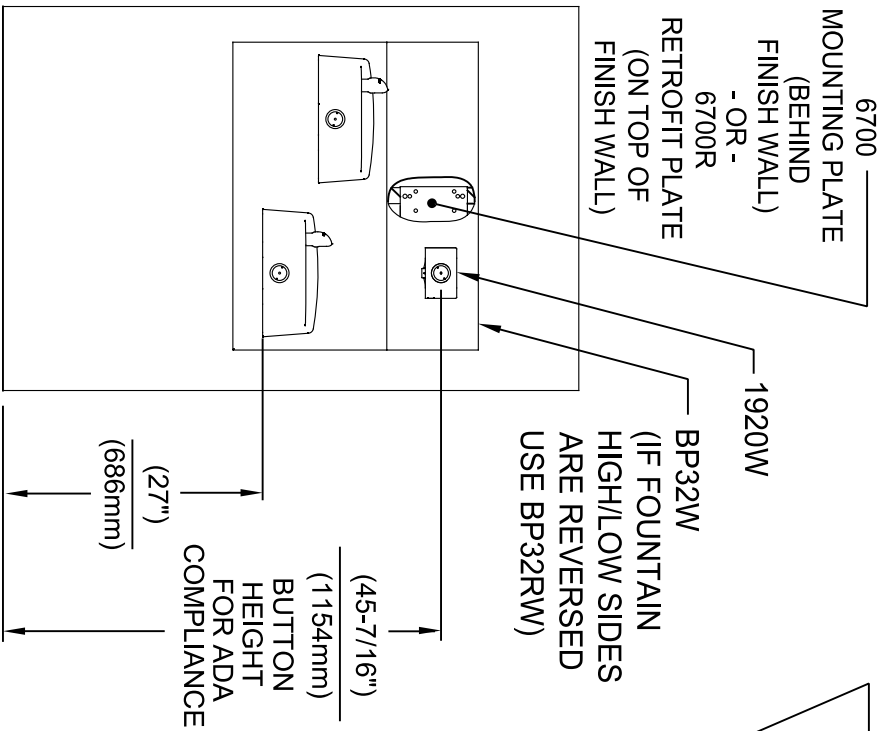


Haws
Since 1906

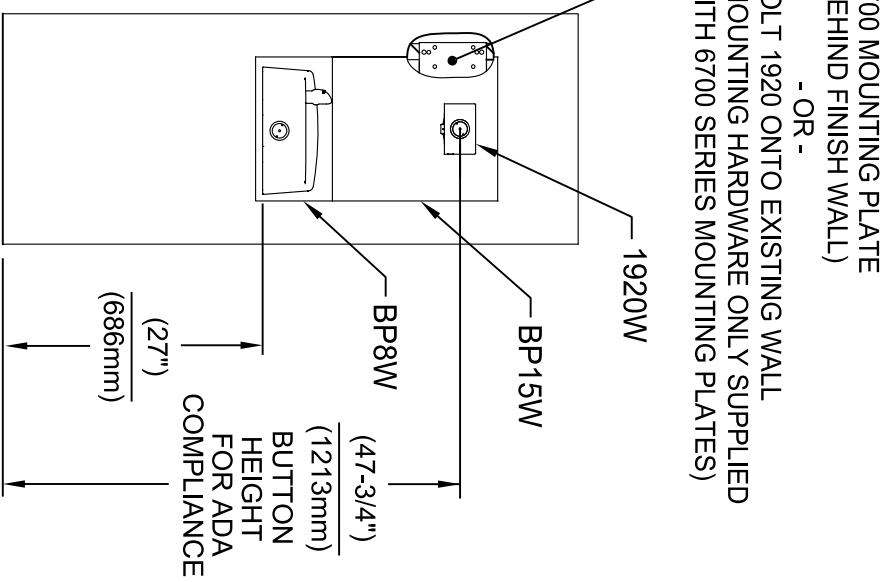
1455 KLEPPLELANE
SPARKS, NEVADA 89431
(775) 359-4712 FAX (775) 359-424
E-MAIL: HAWS@HAWSCO.COM
WEBSITE: WWW.HAWSCO.COM

| | | | | |
|-------------------------|--------------------|---------------|----------|-----------------------|
| EGN NO. REVISED PER BY: | MODEL(S) | SCALE: | DATE: | INSTALLATION: |
| 5081 FV | 1920/1920HPS/1920W | N/A | 04/19/24 | |
| DRAWN: FV | | DRAWING TYPE: | | SIZE: A1 SHEET 4 OF 8 |
| DATE: 01/30/17 | | | | REVISION: 12 |
| CHKD: JC | | | | |
| APPROVED: FV | | | | |

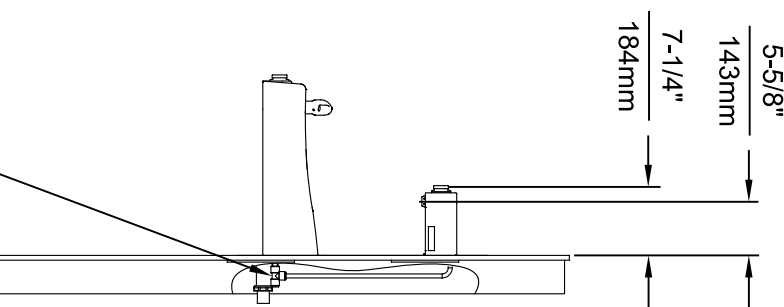
PART NUMBER: 0510000490.D



INSTALLATION ABOVE HAWS 1501



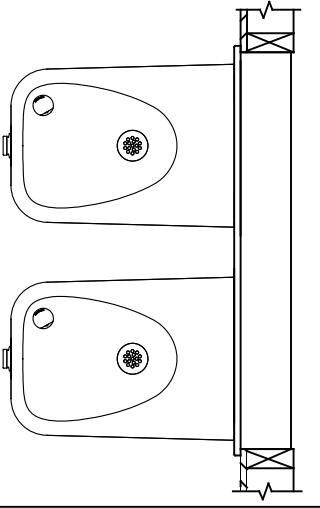
**INSTALLATION ABOVE HAWS 1311
SEE SHEET 8 FOR INSTALLATION AT CHILD HEIGHT**



3/8" O.D. SUPPLY TUBING AND 3/8" O.D. PUSH-IN TEE SUPPLIED. (CONNECT TO FOUNTAIN SUPPLY LINE)

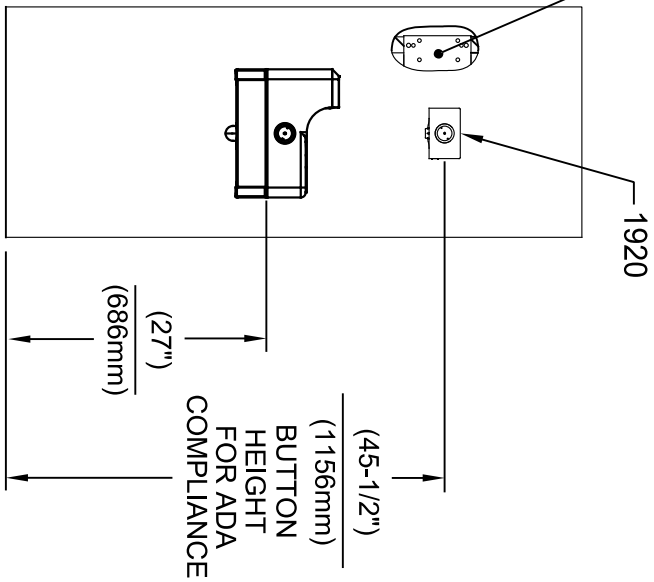
* IF YOUR FOUNTAIN IS THIS STYLE USE THESE DIMENSIONS

1. SEE SEPARATE INSTALLATION DRAWINGS FOR MOUNTING PLATES AND BACK PANELS (SHOWN FOR REFERENCE - NOT SUPPLIED).
2. WHEN INSTALLING THIS UNIT, LOCAL, STATE OR FEDERAL CODES SHOULD BE ADHERED TO FOR INSTALLATION LOCATIONS, WASTE & SUPPLY REQUIREMENTS OTHER THAN SHOWN.



| | | | | |
|--|--------------------|--------|-------|---------------|
| EGN NO. REVISED PER BY: | DATE: | SCALE: | SIZE: | INSTALLATION: |
| 5081 | 02/19/17 | N/A | A1 | |
| DRAWN: | DATE: | SCALE: | SIZE: | INSTALLATION: |
| ML | 02/19/17 | N/A | A1 | |
| APPROVED: | DATE: | SCALE: | SIZE: | INSTALLATION: |
| FV | 04/19/24 | N/A | A1 | |
| MODEL(S) | 1920/1920HPS/1920W | | | |
| 1455 KLEPPLE LANE SPARKS, NEVADA 89431 (775) 359-4712 FAX (775) 359-7424 E-MAIL: HAWS@HAWS.CO.COM WEBSITE: WWW.HAWS.CO.COM | | | | |
| PART NUMBER | 0510000490.D | | | |
| REVISION | 12 | | | |

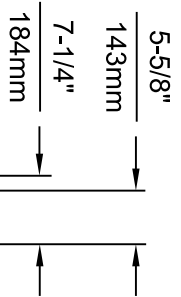
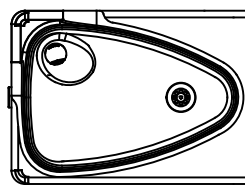
6700 MOUNTING PLATE
(BEHIND FINISH WALL)
- OR -
BOLT 1920 ONTO EXISTING WALL
(MOUNTING HARDWARE ONLY SUPPLIED
WITH 6700 SERIES MOUNTING PLATES)



INSTALLATION ABOVE HAWES 1047

* IF YOUR FOUNTAIN IS THIS STYLE USE THESE DIMENSIONS

1. SEE SEPARATE INSTALLATION DRAWINGS FOR MOUNTING PLATES AND BACK PANELS (SHOWN FOR REFERENCE - NOT SUPPLIED).
2. WHEN INSTALLING THIS UNIT, LOCAL, STATE OR FEDERAL CODES SHOULD BE ADHERED TO FOR INSTALLATION LOCATIONS, WASTE & SUPPLY REQUIREMENTS OTHER THAN SHOWN.



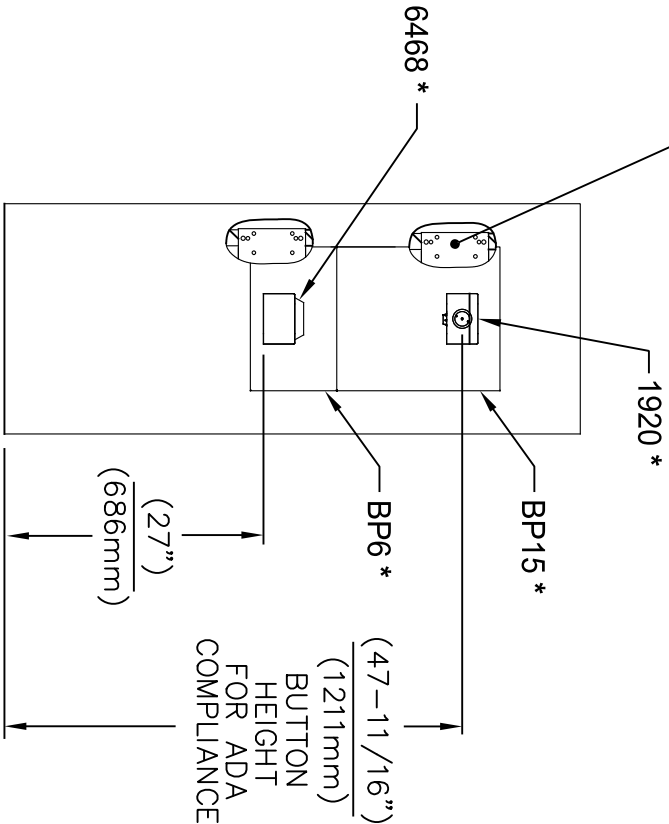
3/8" O.D. SUPPLY TUBING AND 3/8" O.D. PUSH-IN TEE SUPPLIED. (CONNECT TO FOUNTAIN SUPPLY LINE)



| | | | | | |
|----------------------------------|----------------|--------------------|---------------|-----------------------|-----------------------------------|
| EQUIPMENT NO. REVISED PER BY: FV | | MODEL(S) | | 1455 KLEPPLE PLANE | |
| 5220 | ECON: 3972 | 1920/1920HPS/1920W | | SPARKS, NEVADA 89431 | |
| DRAWN: JP | DATE: 09/14/17 | SCALE: N/A | DRAWING TYPE: | INSTALLATION: | (775) 359-4712 FAX (775) 359-7424 |
| CHKD: JC | DATE: 04/19/24 | | | SIZE: A1 SHEET 6 OF 8 | E-MAIL: HAWS@HAWESCO.COM |
| APPROVED: FV | | | | PART NUMBER | WWW.HAWESCO.COM |
| | | | | 0510000490.D | WEBSITE: WWW.HAWESCO.COM |
| | | | | REVISION: | |
| | | | | 12 | |

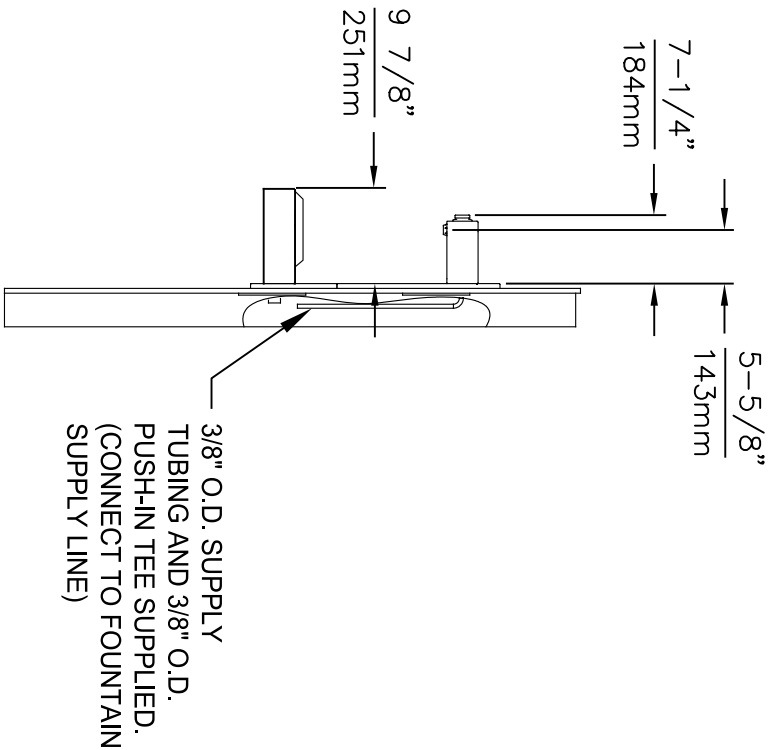
6700 MOUNTING PLATE
(BEHIND FINISH WALL)
- OR -
6700R RETROFIT PLATE
(ON TOP OF FINISH WALL)

* MODELS 1920 (BOTTLE FILLER),
BP15, BP6 (BACK PANELS) AND
6468 (WASTE DRIP TRAY) ARE
ALL AVAILABLE TOGETHER AS
MODEL 1922.



INSTALLATION ABOVE 6468

1. SEE SEPARATE INSTALLATION DRAWINGS FOR MOUNTING PLATE, WASTE DRIP TRAY AND BACK PANELS (SHOWN FOR REFERENCE - NOT SUPPLIED).
2. WHEN INSTALLING THIS UNIT, LOCAL, STATE OR FEDERAL CODES SHOULD BE ADHERED TO FOR INSTALLATION LOCATIONS, WASTE & SUPPLY REQUIREMENTS OTHER THAN SHOWN.



3/8" O.D. SUPPLY
TUBING AND 3/8" O.D.
PUSH-IN TEE SUPPLIED.
(CONNECT TO FOUNTAIN
SUPPLY LINE)



Since 1906

1455 KLEPPLELANE

SPARKS, NEVADA 89431

(775) 359-4712 FAX (775) 359-7424

E-MAIL: HAWS@HAWS.CO.COM

WEBSITE: WWW.HAWS.CO.COM

ECON. NO. REVISED PER BY: FV

5807 ECON. 5972

DRAWN: DATE: 10/27/20

DP: DATE: 04/19/24

MODEL(S)

1920/1920HPS/1920W

SCALE: N/A

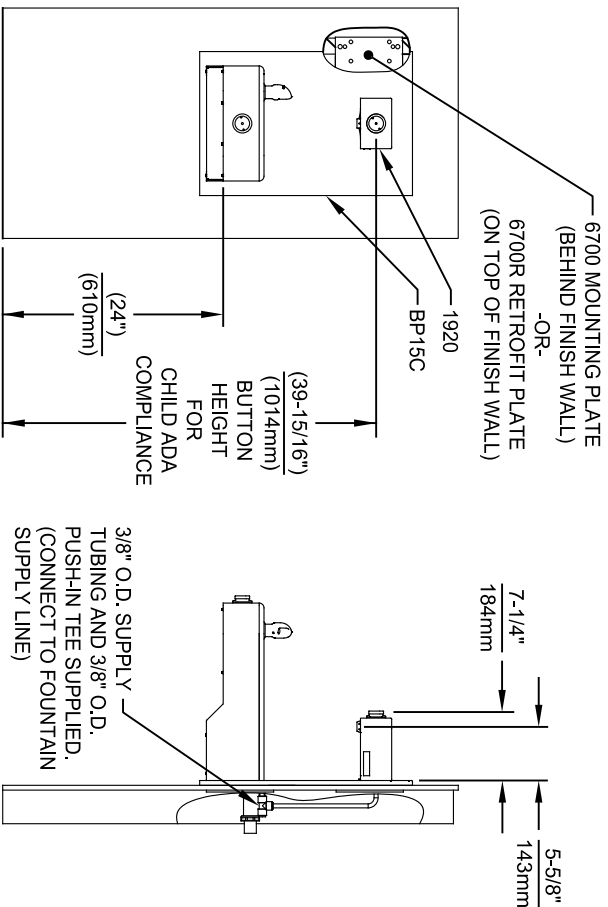
DRAWING TYPE:

PART NUMBER

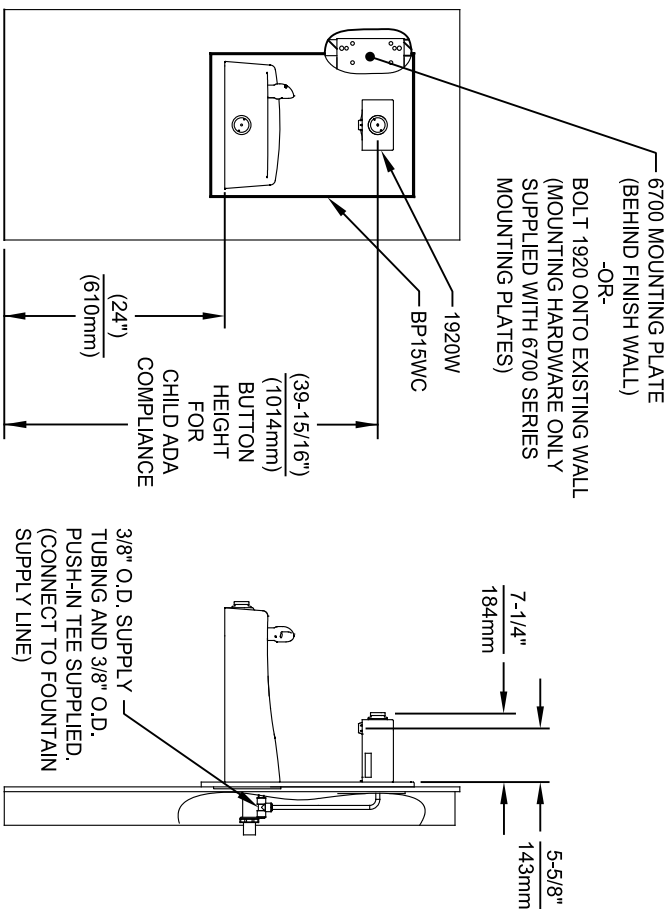
0510000490 D

REVISION:

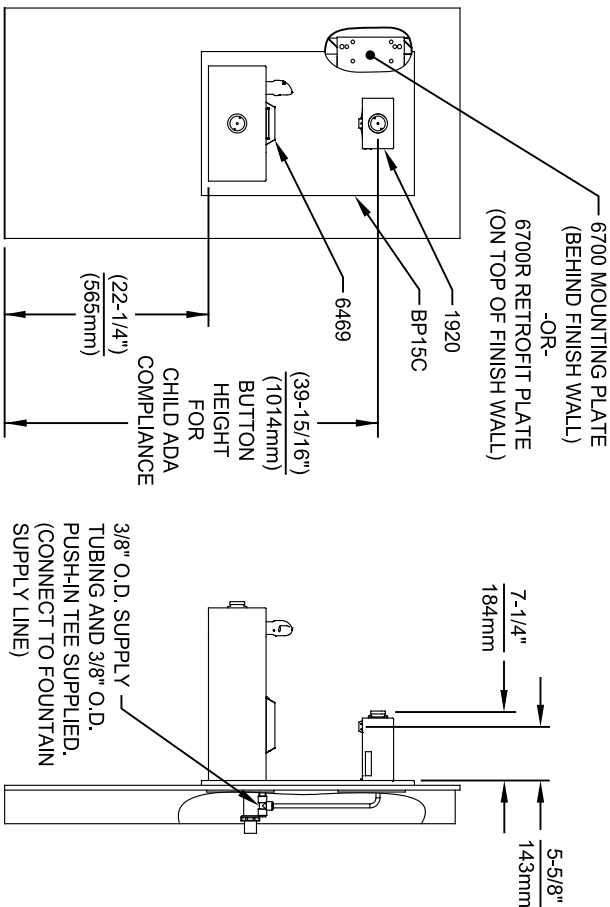
12



INSTALLATION ABOVE HAWS 1107L & H1107.8 SERIES



INSTALLATION ABOVE HAWS 1311



INSTALLATION ABOVE HAWS 1109, 1109.14 & H1109.8 SERIES

- NOTES:
- HEIGHT DIMENSIONS SHOWN ARE FOR CHILD ADA APPLICATIONS:
- BOTTLE FILLER HEIGHT AT 40" MAX.
- DRINKING FOUNTAIN BUBBLER HEIGHT AT 30" MAX.
(SEE SHEETS 3, 4 & 5 FOR ADULT ADA HEIGHT DIMENSIONS)
 - SEE SEPARATE INSTALLATION DRAWINGS FOR MOUNTING PLATES AND BACK PANELS (SHOWN FOR REFERENCE - NOT SUPPLIED).
 - WHEN INSTALLING THIS UNIT, LOCAL, STATE OR FEDERAL CODES SHOULD BE ADHERED TO FOR INSTALLATION LOCATIONS, WASTE & SUPPLY REQUIREMENTS OTHER THAN SHOWN.

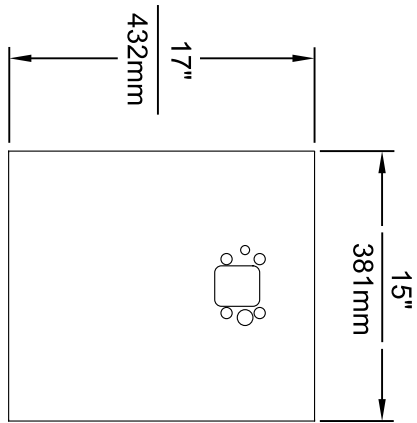
Haws
Since 1906

1455 KLEPPLELANE
SPARKS, NEVADA 89431
(775) 359-4712 FAX (775) 359-424
E-MAIL: HAWS@HAWSCO.COM
WEBSITE: WWW.HAWSCO.COM

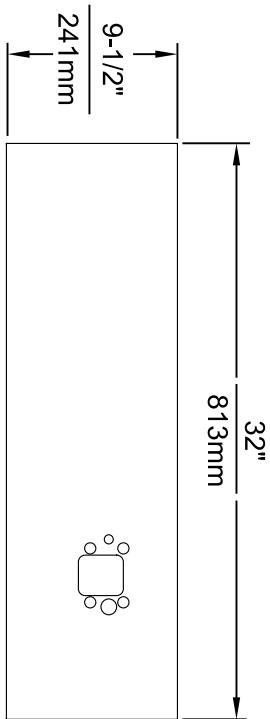
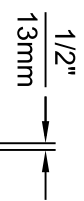
| | | | | | | | | |
|-------------------------|----------|--------|----------|----------|----------|----------|----------|----------|
| ECN NO. REVISED PER BY: | MODEL(S) | SCALE: | DATE: | DATE: | DATE: | DATE: | DATE: | DATE: |
| 5907 | | | 01/26/24 | 01/26/24 | 01/26/24 | 01/26/24 | 01/26/24 | 01/26/24 |
| DRAWN: FV | | | CHKD: JC | | | | | |
| APPROVED: FV | | | | | | | | |

1920/1920HPS/1920W

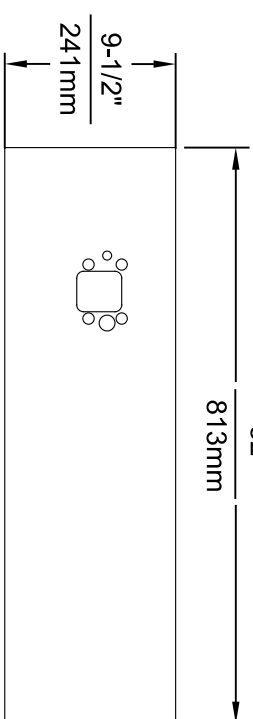
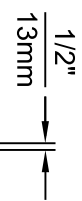
PART NUMBER: 05110000490 D
REVISION: 12



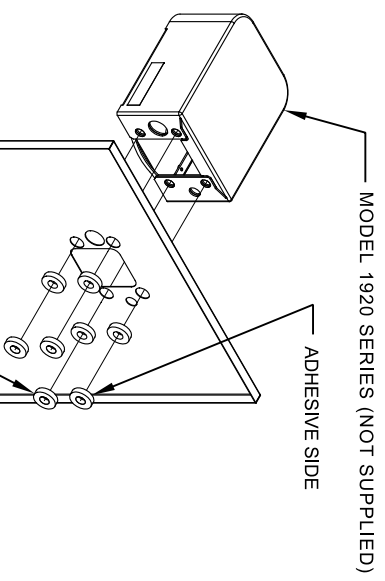
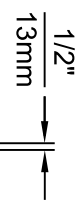
MODEL BP15 / BP15HPS / BP15W



MODEL BP32 / BP32HPS / BP32W



MODEL BP32R / BP32RW




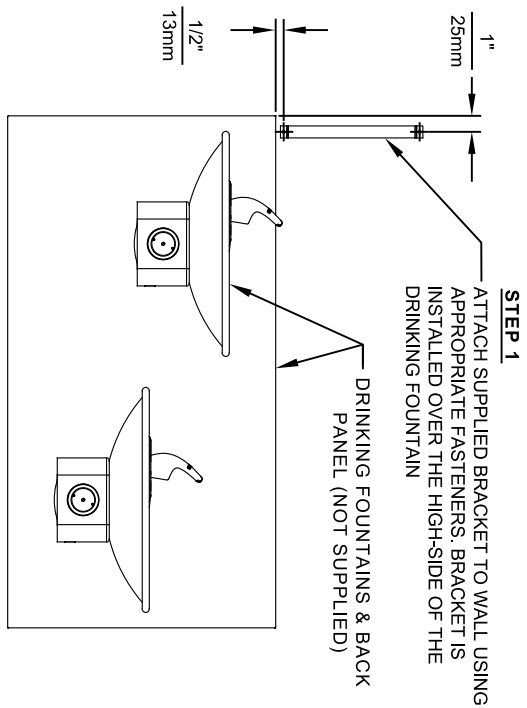
8 SPACERS (2 PER MOUNTING BOLT IF THE MOUNTING PLATE (MODEL 6700 - NOT SUPPLIED) IS INSTALLED BEHIND THE FINISHED WALL. USE 1 SPACER PER BOLT FOR RETROFITS WHERE THE MOUNTING PLATE (MODEL 6700R - NOT SUPPLIED) IS INSTALLED IN FRONT OF THE FINISHED WALL)

INSTALLATION OVER SINGLE FOUNTAIN

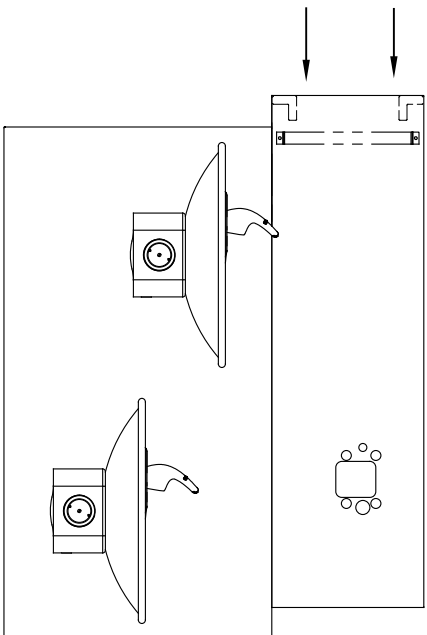
SHOWN FROM REAR
 (SEE SHEET 3 OF 3 FOR INSTALLATION OF SPACERS ON COMBINATION BOTTLE FILLER AND FOUNTAIN BACK PANELS FOR CHILD HEIGHT APPLICATIONS - MODELS BP15C & BP15WC)

- NOTES:
1. WHEN INSTALLING THIS UNIT, LOCAL, STATE OR FEDERAL CODES SHOULD BE ADHERED TO.
 2. BOTTLE FILLER SHOWN FOR REFERENCE ONLY (NOT SUPPLIED).

| | | | |
|---|--|--|---------------------------|
|  <p>Haws Since 1906</p> | | MODEL(S) DRAWING, BACK PANEL, SPACER INSTALLATION FOR BP15 SERIES & BP32 SERIES, BOTTLE FILLER | PART NUMBER 0510000493 |
| EGN NO. REVISED PER BY: 5081 FV | DATE: 06/27/16 CHK'D: JC APP'D: FV | SCALE: 1:1 DRAWING TYPE: INSTALLATION | REVISION: 5 |
| SPARKS, NEVADA 89431 (775) 359-4712 FAX (775) 359-7424 E-MAIL: HAWS@HAWSCO.COM WEBSITE: WWW.HAWSCO.COM | | SIZE: A1 SHEET: 1 OF 3 | |

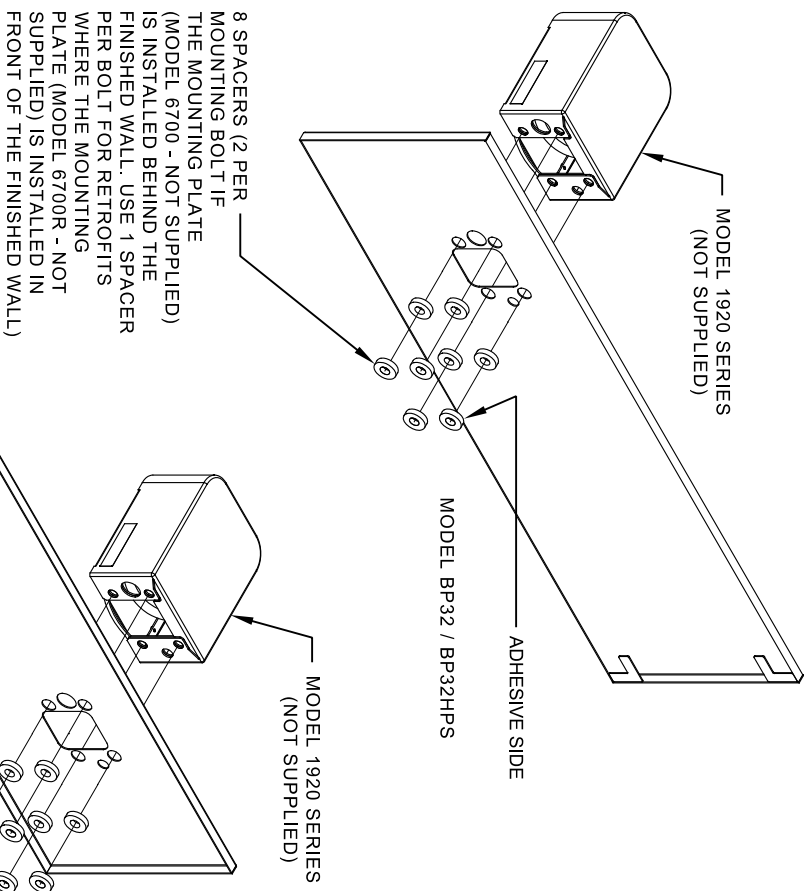


STEP 2
PLACE THE BACKPLATE AGAINST THE WALL AND SLIDE SIDEWAYS SO THE TABS CATCH UNDER THE BRACKET.

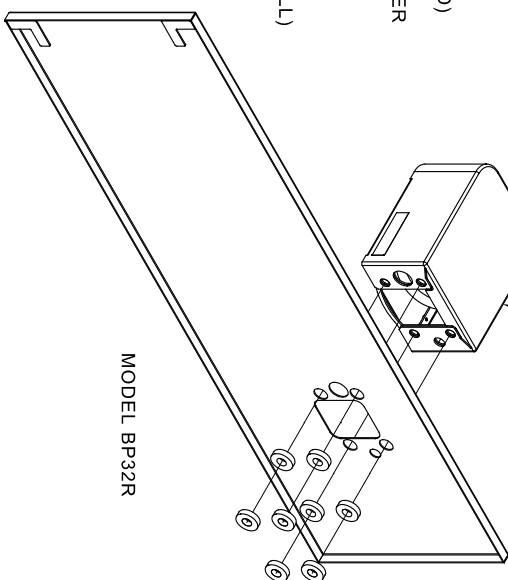



STEP 3
INSTALL THE BOTTLE FILLER (NOT SUPPLIED) PER THE INSTRUCTIONS SUPPLIED WITH THE UNIT.

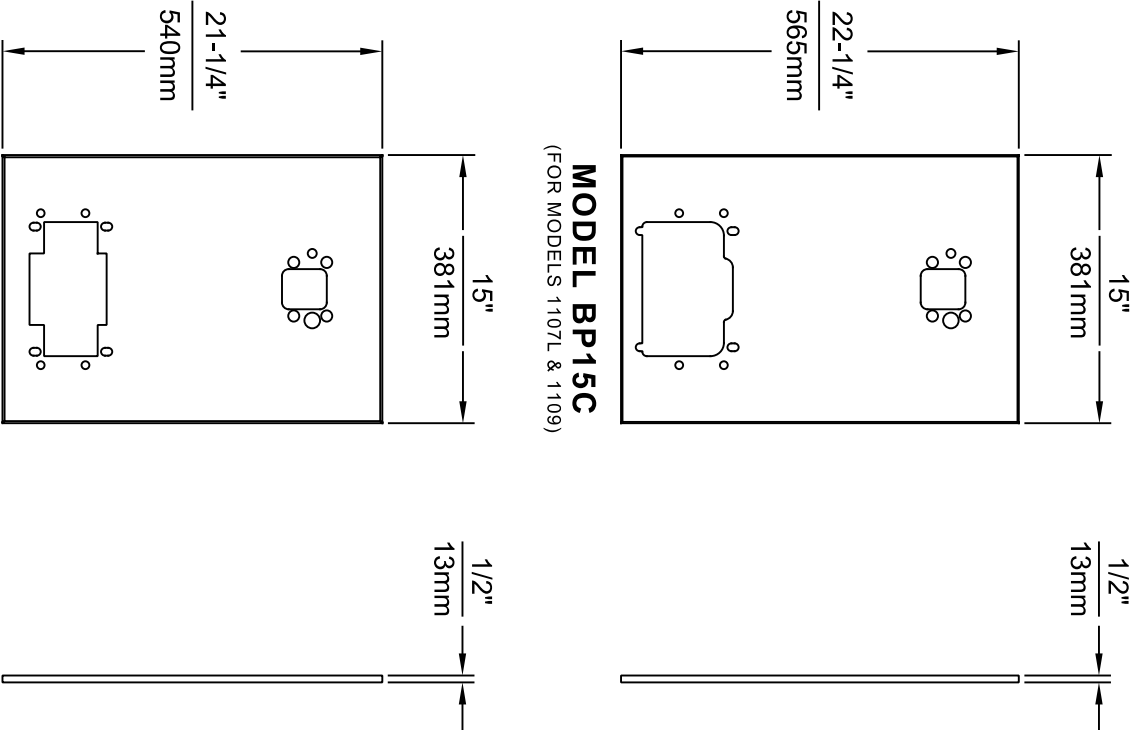
- NOTES:
1. WHEN INSTALLING THIS UNIT, LOCAL, STATE OR FEDERAL CODES SHOULD BE ADHERED TO.
 2. BOTTLE FILLERS, DRINKING FOUNTAINS & DRINKING FOUNTAIN BACK PANELS SHOWN FOR REFERENCE ONLY (NOT SUPPLIED).



INSTALLATION OVER DOUBLE FOUNTAIN SHOWN FROM REAR

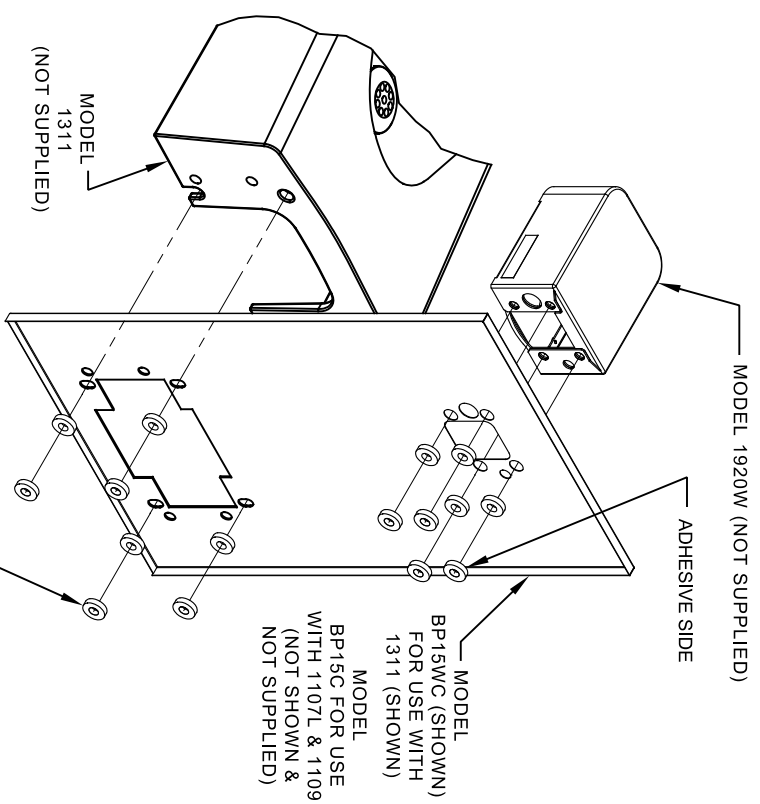


| | | | |
|---|-----------|---|--------------|
|  | | MODEL(S) DRAWING, BACK PANEL, SPACER INSTALLATION FOR BP15 SERIES & BP32 SERIES, BOTTLE FILLER | |
| EGN NO. REVISED PER BY: | 5081 FV | SCALE: | 1:1 |
| DRAWN: | ECN: 3972 | DATE: | 02/02/17 |
| CHKD: | JC | DATE: | 04/19/24 |
| APPROVED: | FV | SCALE: | 1:1 |
| DATE: | 04/19/24 | DRAWING TYPE: | INSTALLATION |
| SIZE: | A1 | SHEET: | 2 OF 3 |
| 1455 KLEPPLELANE SPARKS, NEVADA 89431 (775) 359-4712 FAX (775) 359-7424 E-MAIL: HAWS@HAWSCO.COM WEBSITE: WWW.HAWSCO.COM | | PART NUMBER 0510000493 REVISION 5 | |



MODEL BP15WC
(FOR MODEL 1311)


- NOTES:
1. WHEN INSTALLING THIS UNIT, LOCAL, STATE OR FEDERAL CODES SHOULD BE ADHERED TO.
 2. BOTTLE FILLER AND DRINKING FOUNTAIN SHOWN FOR REFERENCE ONLY (NOT SUPPLIED).



16 SPACERS (2 PER MOUNTING BOLT IF BOTH MOUNTING PLATES (MODEL 6700 - NOT SUPPLIED) ARE INSTALLED BEHIND THE FINISHED WALL. USE 1 SPACER PER BOLT FOR RETROFITS WHERE BOTH MOUNTING PLATES (MODEL 6700R - NOT SUPPLIED) ARE INSTALLED IN FRONT OF THE FINISHED WALL)

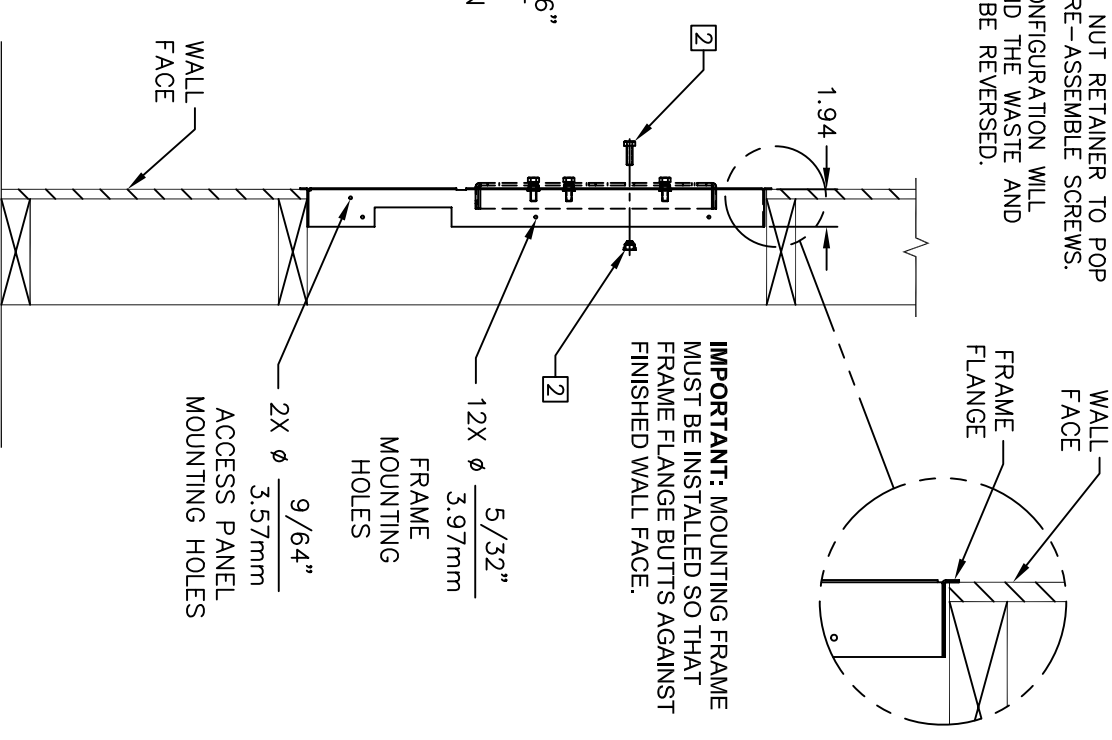
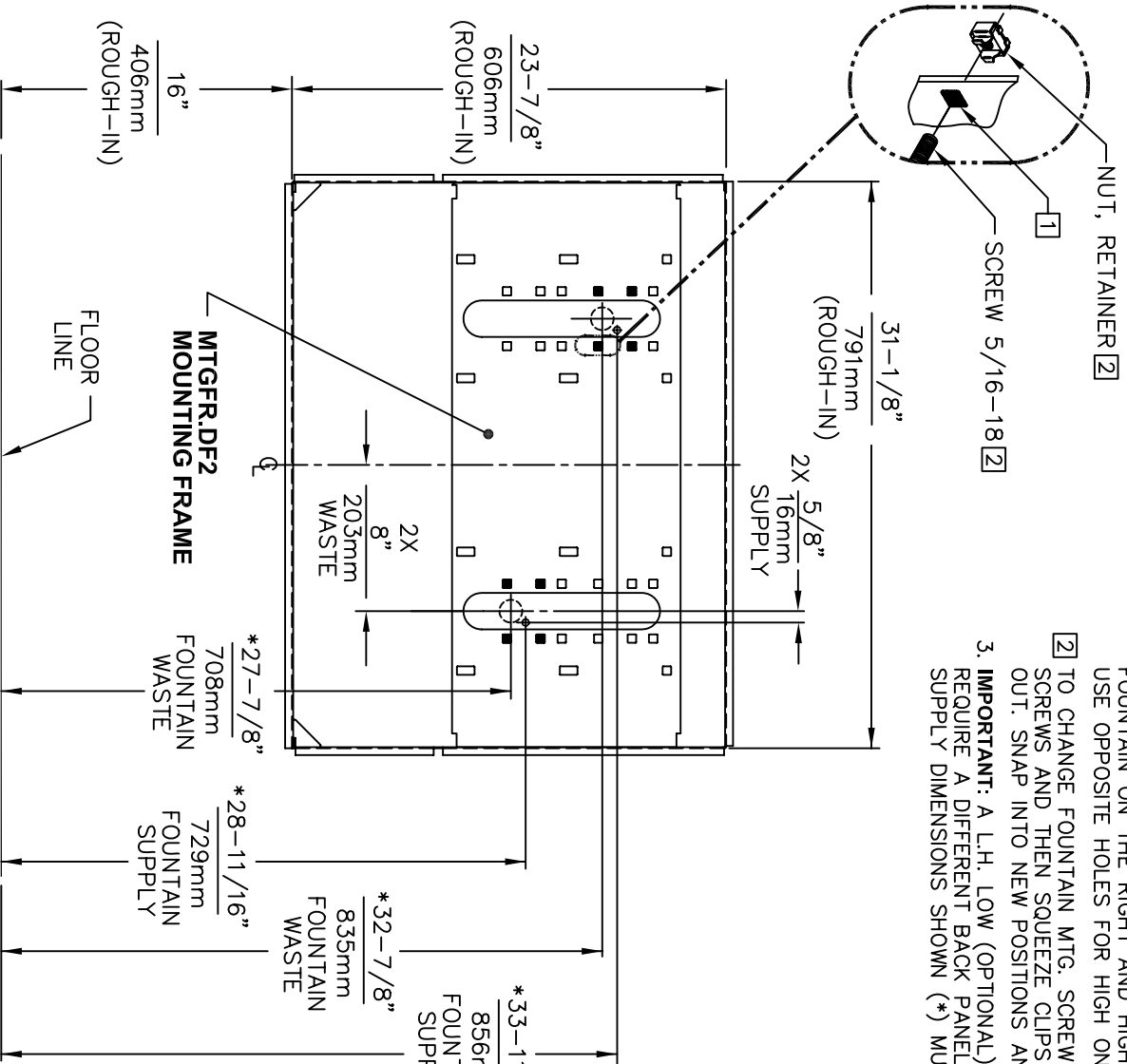
ONE PIECE INSTALLATION ON SINGLE FOUNTAIN

SHOWN FROM REAR
(MODEL BP15C & BP15WC ARE COMBINATION BOTTLE FILLER AND FOUNTAIN BACK PANELS USED FOR CHILD HEIGHT APPLICATIONS ONLY ON MODELS 1107L, 1109 & 1311 - BOTTLE FILLER & DRINKING FOUNTAIN NOT SUPPLIED)

| | | | |
|---|---|---|--|
|  <p>Haws Since 1906</p> | | <p>1455 KLEPPLELANE SPARKS, NEVADA 89431 (775) 359-4712 FAX (775) 359-424 E-MAIL: HAWS@HAWSCO.COM WEBSITE: WWW.HAWSCO.COM</p> | |
| <p>EGN NO. 5972 DRAWN: FV DATE: 12/19/23</p> | <p>REVISED PER BY: FV ECON: 5972 DATE: 12/19/23</p> | <p>MODEL(S) DRAWING, BACK PANEL, SPACER INSTALLATION FOR BP15 SERIES & BP32 SERIES, BOTTLE FILLER</p> | <p>PART NUMBER: 0510000493 REVISION: 5</p> |
| <p>APPROVED: FV DATE: 04/19/24</p> | <p>SCALE: 1:1</p> | <p>DRAWING TYPE: INSTALLATION</p> | <p>SIZE: A1 SHEET 3 OF 3</p> |

NOTES:

- [1] HOLE COMBINATION SHOWN BELOW IS FOR USE WITH LOW FOUNTAIN ON THE RIGHT AND HIGH FOUNTAIN ON THE LEFT. USE OPPOSITE HOLES FOR HIGH ON RIGHT AND LOW ON LEFT.
- [2] TO CHANGE FOUNTAIN MTG. SCREW LOCATIONS: FIRST REMOVE SCREWS AND THEN SQUEEZE CLIPS ON NUT RETAINER TO POP OUT. SNAP INTO NEW POSITIONS AND RE-ASSEMBLE SCREWS.
- 3. **IMPORTANT:** A L.H. LOW (OPTIONAL) CONFIGURATION WILL REQUIRE A DIFFERENT BACK PANEL AND THE WASTE AND SUPPLY DIMENSIONS SHOWN (*) MUST BE REVERSED.



- 4. HOLD ROUGH-IN DIMENSIONS $\pm 1/8"$ (3.2mm).
- 5. WHEN INSTALLING THIS UNIT, LOCAL, STATE OR FEDERAL CODES SHOULD BE ADHERED TO. FOR INSTALLATION HEIGHTS OTHER THAN SHOWN, DIMENSIONS MARKED (*) MUST BE ADJUSTED ACCORDINGLY.

**FOR USE WITH MODELS:
1011MS & 1011HPSMS**



INFO FAX : 1-888-FAX-HAWS (1-888-329-4297)

1455 Kleppe Ln, Sparks, NV, 89431

Phone: 775-359-4712; Fax: 775-359-7424

Haws Ag, Bachweg 3, CH-3401 Burgdorf, Switzerland

Haws Mfg Pte Ltd, 74, Sungai Kadut Loop, Singapore, 729531

e-mail: Haws@hawsco.com website: www.hawsco.com

MODEL(S): MOUNTING FRAME

MTGFR.DF2


INFO FAX DOC #: 26843732

SCALE: 1:10 DRAWING TYPE: INSTALLATION/FABRICK

| | | | | | |
|------------|-------------|-------|----|-------|------|
| FORM NO. 1 | REVISED FOR | DATE | BY | CHKD. | DATE |
| 0007080297 | ENCL. 4173 | 08/97 | | | |
| 0007080297 | DATE | | | | |
| 13161000 | | | | | |
| REV | | | | | |
| 6 | | | | | |

6700 INDEX

| | | |
|----------------------|--------------------------------|---|
| INSTALLATION WITH: | TYPICAL USES | SEE SHEET... |
| GENERAL INSTALLATION | | IMPORTANT INFORMATION FOR ALL INSTALLATIONS |
| 1001 BOWLS | HAWS SERIES 1001X, H1001.8X | 3 OF 6 |
| 1107 BOWLS | HAWS SERIES 1107L, H1107.8 | 3 OF 6 |
| 1109 BOWLS | HAWS SERIES 1109X, H1109.8X | 3 OF 6 |
| 1047 BOWLS | HAWS SERIES 1047 | 4 OF 6 |
| 1011 BOWLS | HAWS SERIES 1011X, H1011.8X | 4 OF 6 |
| 1119 BOWLS | HAWS SERIES 1119X, H1119.8X | 4 OF 6 |
| 1117 BOWLS | HAWS SERIES 1117X, H1117.8X | 5 OF 6 |
| 1311 BOWLS | HAWS SERIES 1311 | 5 OF 6 |
| 1501 BOWLS | HAWS SERIES 1501 | 5 OF 6 |
| CHILD HEIGHT | HAWS 1107PCH, 1109PCH, 1311PCH | 6 OF 6 |

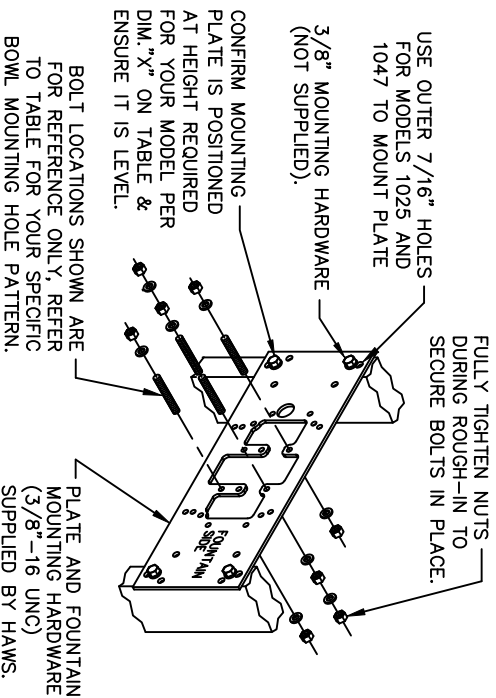
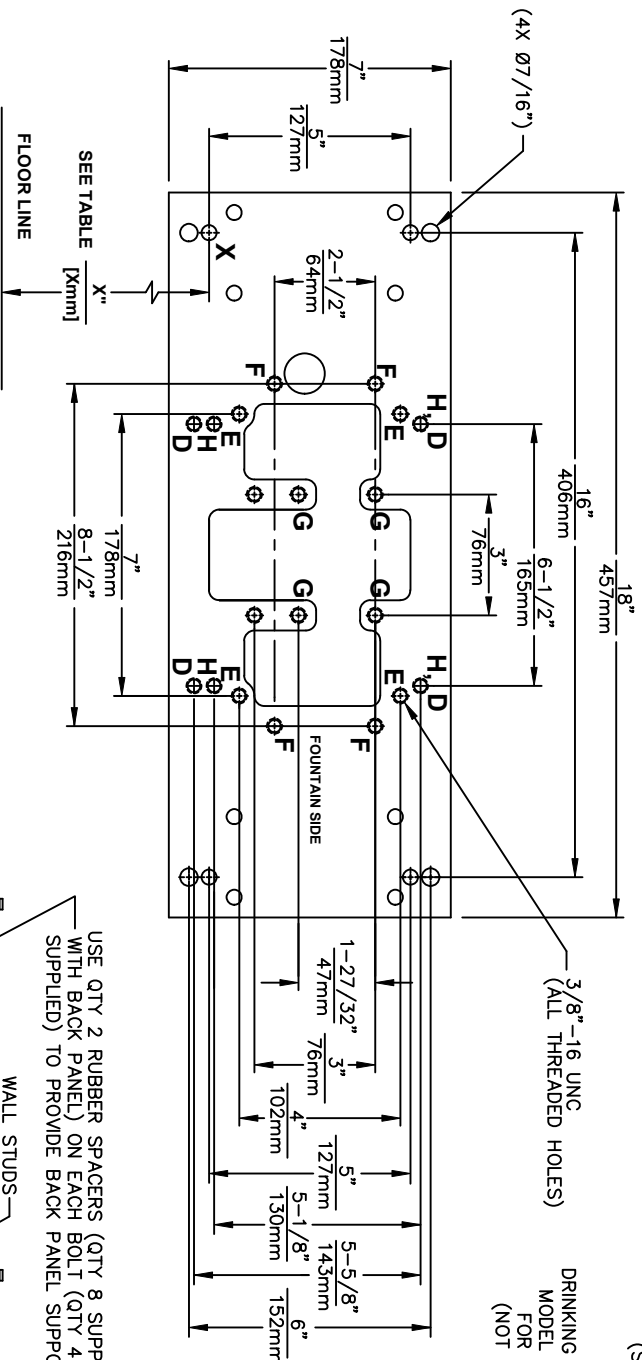


Haws
Since 1906

1455 KLEPPE LANE
SPARKS, NEVADA 89431
(775) 359-4712 FAX (775) 359-7424
E-MAIL: HAWS@HAWS.CO.COM
WEBSITE: WWW.HAWS.CO.COM

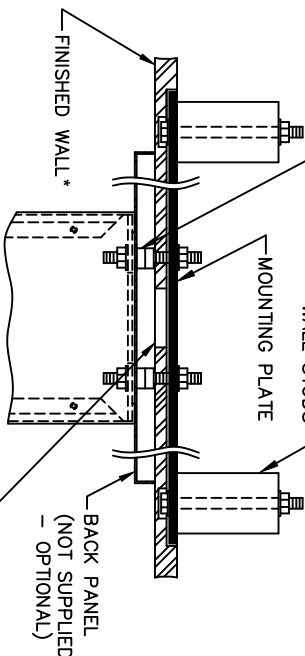
| | | | | | | | | | | | |
|--------------------------|----|-------|----------|--------|-----|---------------|--------------|-------|---|--------|--------|
| ECON NO. REVISED PER BY: | JG | DATE: | 11/26/24 | SCALE: | N/A | DRAWING TYPE: | INSTALLATION | SIZE: | A | SHEET: | 1 OF 6 |
| DRAWN: | JG | DATE: | 10/03/24 | SCALE: | N/A | DRAWING TYPE: | INSTALLATION | SIZE: | A | SHEET: | 1 OF 6 |
| CHKD: | JG | DATE: | | SCALE: | N/A | DRAWING TYPE: | INSTALLATION | SIZE: | A | SHEET: | 1 OF 6 |
| APPROVED: | RH | DATE: | | SCALE: | N/A | DRAWING TYPE: | INSTALLATION | SIZE: | A | SHEET: | 1 OF 6 |

| | | | |
|----------|-------|-------------|------------|
| MODEL(S) | 67/00 | PART NUMBER | 0002080016 |
| REVISION | | | 25 |



CAUTION

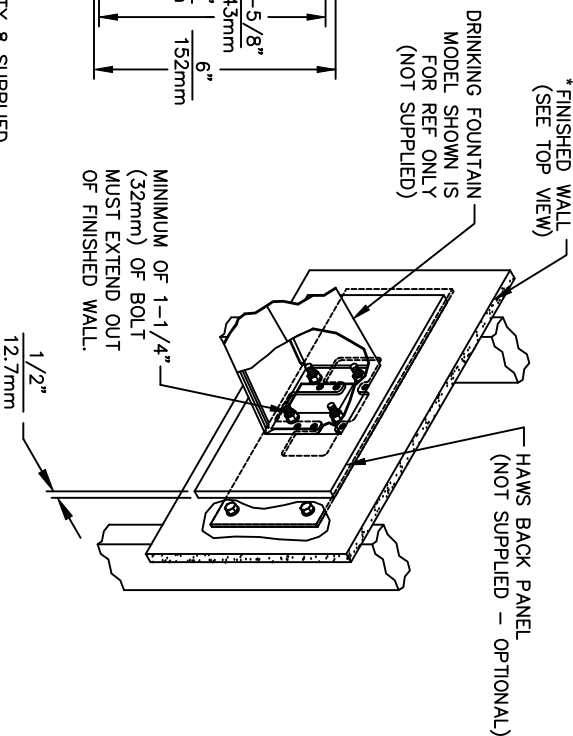
REGARDING CONCRETE/MASONRY WALL MOUNTING: DO NOT SECURE MOUNTING PLATE TO SAME SIDE OF WALL AS FOUNTAIN. AVOID COMPROMISING INTEGRITY OF WALL WHEN ANCHORING FOUNTAIN. IT IS RECOMMENDED THAT INSTALLER CALL TECHNICAL SUPPORT IF THERE ARE ANY QUESTIONS AS TO HOW TO OBTAIN A PROPER ANCHOR IN CONCRETE/MASONRY WALLS. 1-800-766-5612



TOP VIEW

USE QTY 2 RUBBER SPACERS (QTY 8 SUPPLIED WITH BACK PANEL) ON EACH BOLT (QTY 4 SUPPLIED) TO PROVIDE BACK PANEL SUPPORT.

6700 MOUNTING PLATE
FOR USE WITH
DRINKING FOUNTAINS
AND WASTE DRIP TRAYS
AT 27" ADULT HEIGHT
(SEE SHEETS 2 - 5 FOR USE WITH
BOTTLE FILLER 1920/1920HO SERIES
AND CHILD HEIGHT APPLICATIONS)



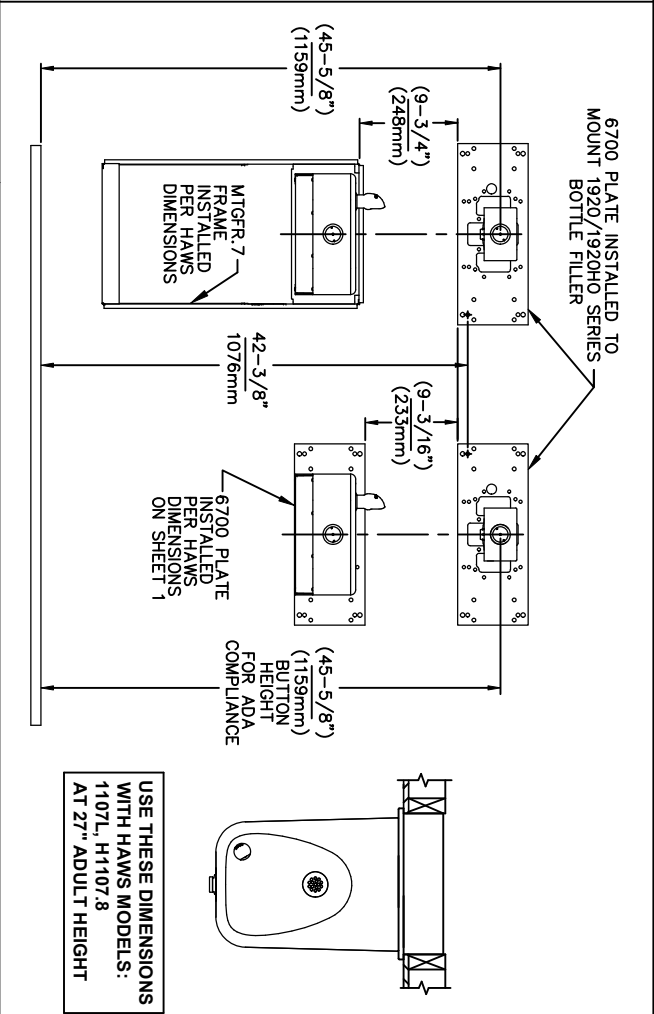
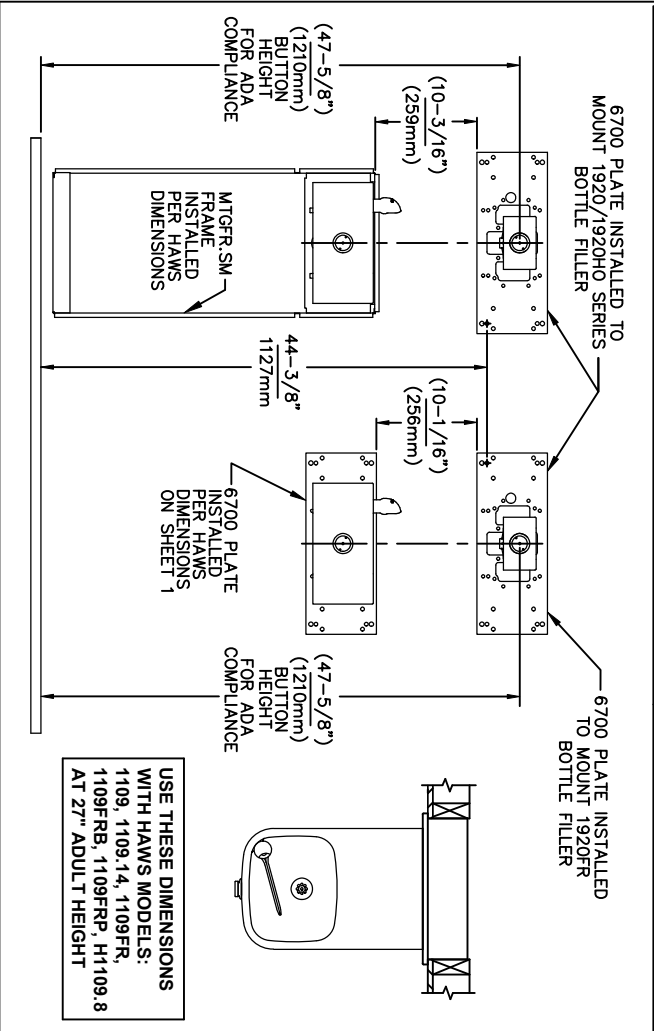
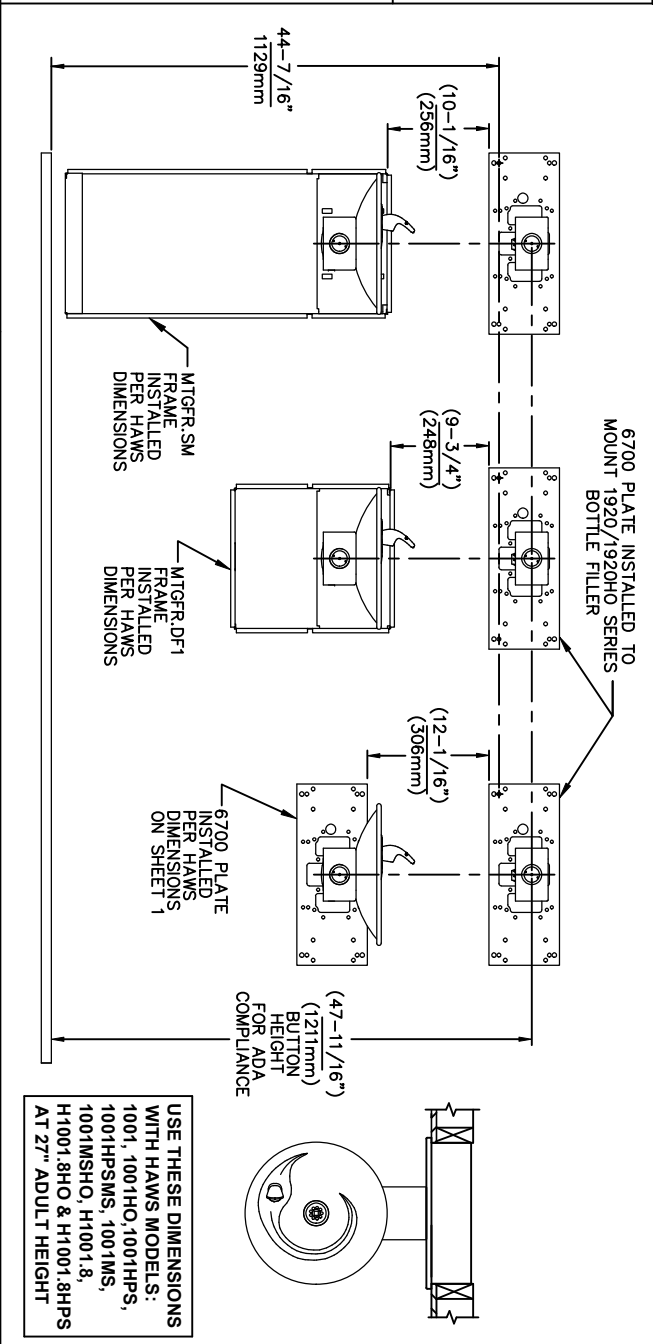
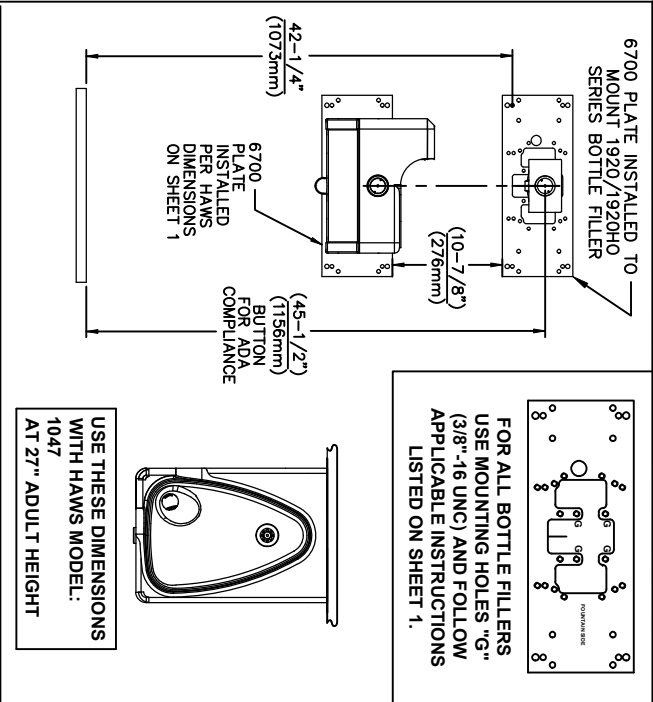
| MODEL | USE BOWL MTG. HOLE PATTERN | USE "X" DIM. BELOW TO POSITION MOUNTING PLATE HOLE "X" |
|---------|----------------------------|--|
| 1001 | "G" | 25-3/8" [645mm] |
| 1025 | "D" | 28-1/8" [714mm] |
| 1047 | "E" | 24-3/8" [619mm] |
| 1105 | "H" | 34-5/16" [872mm] |
| 1107L | "F" | 26-3/16" [665mm] |
| 1109 | "H" | 27-5/16" [694mm] |
| 1109.14 | "H" | 27-5/16" [694mm] |
| 1109FR | "H" | 27-5/16" [694mm] |
| 1311 | "E" | 26-3/4" [679mm] |

| WASTE DRIP TRAY (ONLY) AT 27" ADULT HEIGHT | PART NUMBER |
|--|-------------|
| "G" | 6468 |
| "G" | 1922 |

* FINISH WALL OVER MOUNTING PLATE AND BEHIND BACK PANEL. MAKE SURE THAT FINISHED WALL EXTENDS WITHIN THE BRACKET/BOWL MOUNTING HOLES (TO PROVIDE SURFACE AREA FOR RUBBER SPACERS TO CONTACT).

1455 KLEPPE LANE
 SPARKS, NEVADA, 89431
 (775) 359-4712 FAX (775) 359-7424
 E-MAIL: HAWS@HAWS.CO.COM
 WEBSITE: WWW.HAWS.CO.COM

| | |
|-------------------------|----------------------------|
| ECN NO. REVISED PER BY: | MODEL(S) |
| CON. 6131 | 6700 |
| DATE: 09-03-03 | DATE: |
| CHKD: JG | SCALE: N/A |
| APPROVED: RH | DATE: 11/26/24 |
| SCALE: N/A | DRAWING TYPE: INSTALLATION |
| SIZE: A | SHEET: 2 OF 6 |
| REVISION: 25 | |

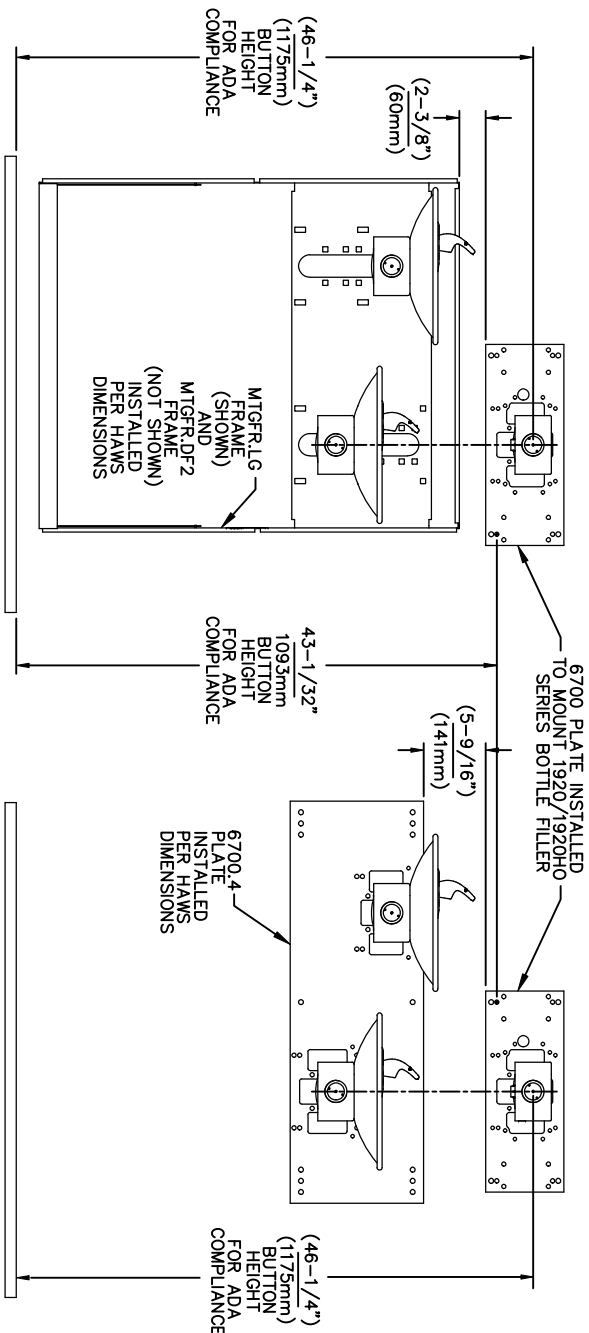


NOTES:
 1. WHEN INSTALLING THIS UNIT, LOCAL, STATE OR FEDERAL CODES SHOULD BE ADHERED TO.
 2. BACK PANELS (OPTIONAL) NOT SHOWN FOR CLARITY.

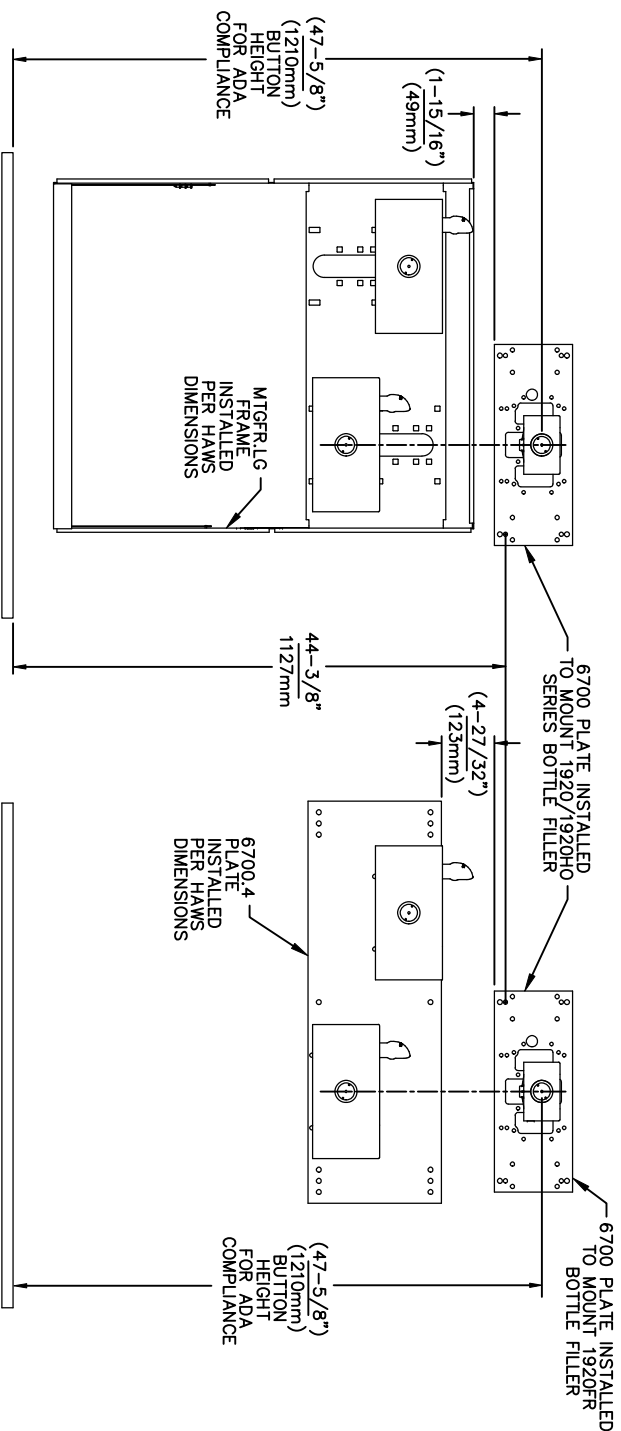
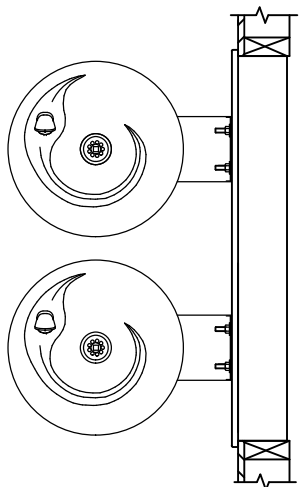
6700 MOUNTING PLATE
 FOR USE WITH BOTTLE FILLER
 (SEE SHEET 1 FOR USE WITH
 DRINKING FOUNTAINS)

1455 KLEPPE LANE
 SPARKS, NEVADA, 89431
 (775) 359-4712 FAX (775) 359-7424
 E-MAIL: HAWS@HAWS.CO.COM
 WEBSITE: WWW.HAWS.CO.COM

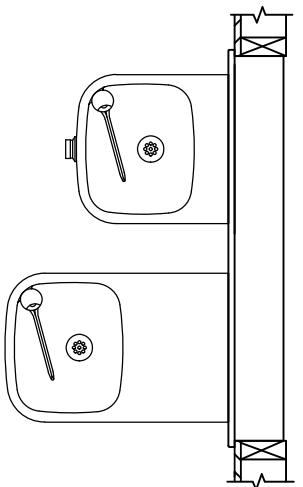
ECN NO. REVISED PER BY: MODEL(S)
 DRAWN: MJ DATE: PV: 6700
 CHECKD: JG
 APPROVED: RH DATE: 11/26/24 SCALE: N/A DRAWING TYPE: INSTALLATION
 PART NUMBER: 0002080016
 REVISION: 25



USE THESE MOUNTING DIMENSIONS IF INSTALLING OVER HAWS FOUNTAIN
 MODEL: 1011, 1011HO, 1011HO2, 1011HPS, 1011HPSHO, 1011HPSHO2, 1011HPSMS, 1011HMS, 1011HMSHO, 1011HMSHO2, H1011.8, H1011.8HO, H1011.8HO2 & H1011.8HPSM AT 27" ADULT HEIGHT
 INSTALL THE 6700 ABOVE THE FOUNTAIN MOUNTING PLATE OR FRAME AT THE DIMENSION SHOWN FOR CORRECT BACKPANEL SPACING
 BACK PANELS FOR BOTTLE FILLERS (NOT SUPPLIED - OPTIONAL) ARE NOT SHOWN FOR CLARITY.



USE THESE MOUNTING DIMENSIONS IF INSTALLING OVER HAWS FOUNTAIN
 MODEL: 1119, 1119.14, 1119.14HO, 1119.14HO2, 1119FR, 1119FRB, 1119FRP, 1119HO, 1119HO2 & H1119.8 AT 27" ADULT HEIGHT
 INSTALL THE 6700 ABOVE THE FOUNTAIN MOUNTING PLATE OR FRAME AT THE DIMENSION SHOWN FOR CORRECT BACKPANEL SPACING
 BACK PANELS FOR BOTTLE FILLERS (NOT SUPPLIED - OPTIONAL) ARE NOT SHOWN FOR CLARITY.



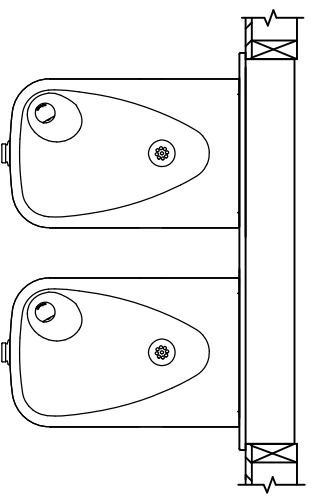
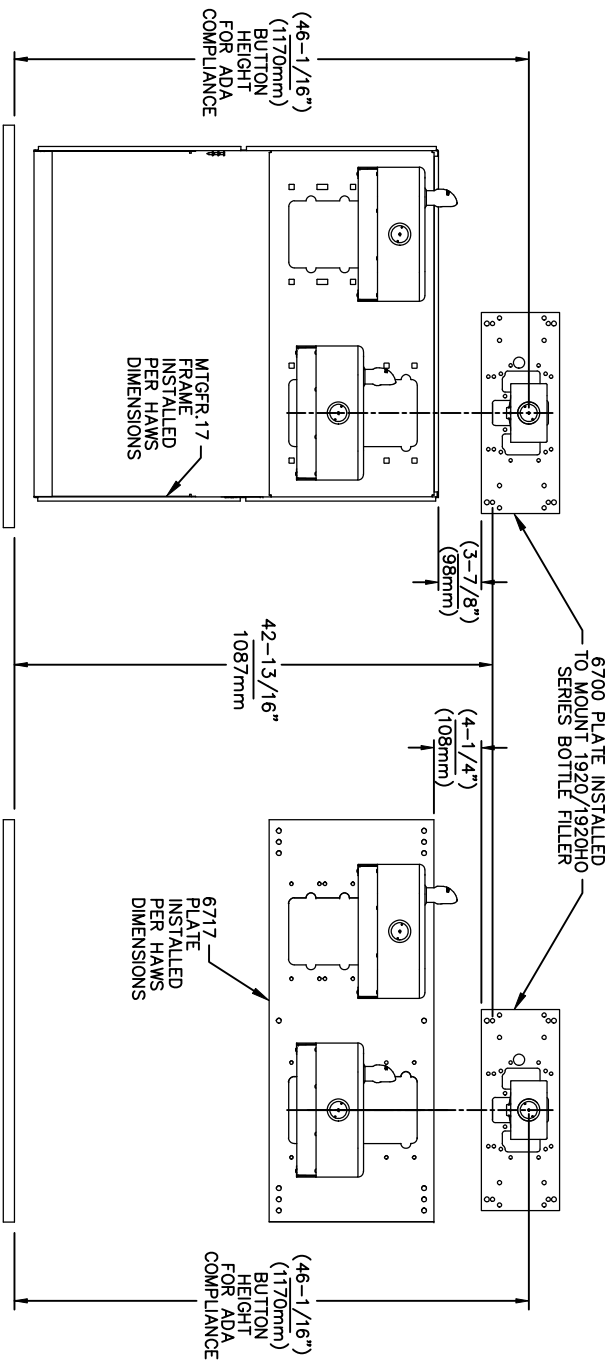
- NOTES:
- WHEN INSTALLING THIS UNIT, LOCAL, STATE OR FEDERAL CODES SHOULD BE ADHERED TO.
 - BACK PANELS (OPTIONAL) NOT SHOWN FOR CLARITY.

6700 MOUNTING PLATE
 FOR USE WITH BOTTLE FILLER
 (SEE SHEET 1 FOR USE WITH
 DRINKING FOUNTAINS)

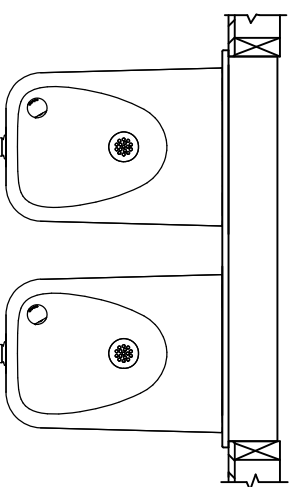
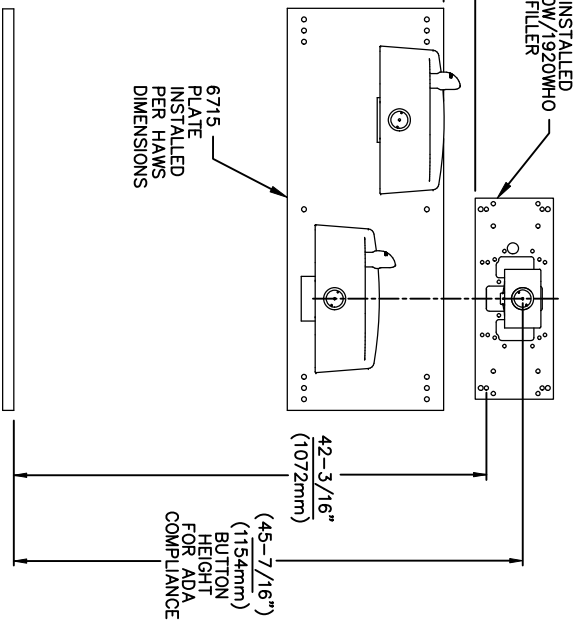
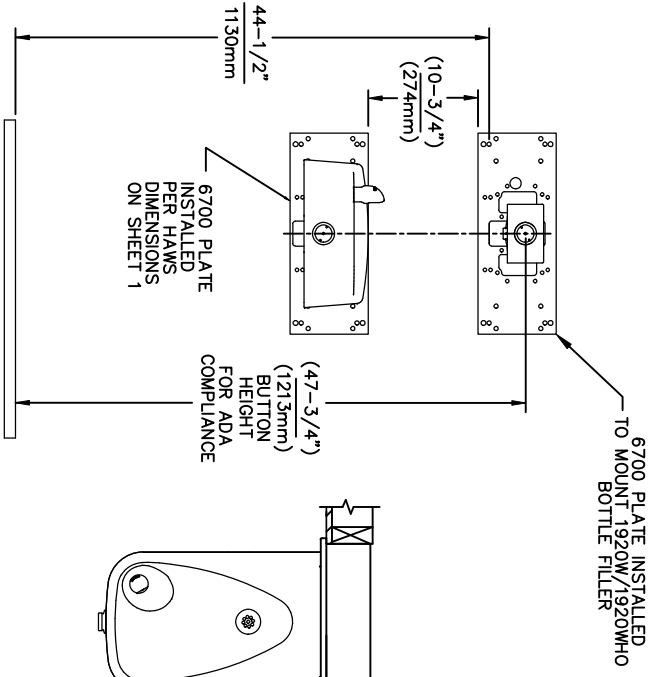
Since 1906

1458 KLEPPE LANE
 SPARKS, NEVADA 89431
 (775) 359-4712 FAX (775) 359-7424
 E-MAIL: HAWS@HAWSCO.COM
 WEBSITE: WWW.HAWSCO.COM

| | | | |
|-------------------------|----------------|-------------|----------------------------|
| ECN NO. REVISED PER BY: | MODEL(S) | | |
| 5550 | 6700 | | |
| DATE: 05/14/20 | DATE: 05/14/20 | SCALE: 1:13 | DRAWING TYPE: INSTALLATION |
| CHKD: JS | CHKD: JS | SIZE: A | SHEET 4 OF 6 |
| APPROVED: RH | DATE: 11/28/24 | | |
| PART NUMBER | | REVISION | |
| 0002080016 | | 25 | |



USE THESE MOUNTING DIMENSIONS IF INSTALLING OVER HAWS FOUNTAIN MODEL: 1117L, 1117LHO, 1117LHO2, H1117.8, H1117.8HO, H1117.8HO2, H1117LN, 1117LNHO, 1117LNHO2 AND H1117LN.8 USE A 6700.4 MOUNTING PLATE & NOT SHOWN - SEE MANUAL(S) AT 27" ADULT HEIGHT
 INSTALL THE 6700 ABOVE THE FOUNTAIN MOUNTING PLATE OR FRAME AT THE DIMENSION SHOWN FOR CORRECT BACKPANEL SPACING
 BACK PANELS FOR BOTTLE FILLERS (NOT SUPPLIED - OPTIONAL) ARE NOT SHOWN FOR CLARITY.



USE THESE MOUNTING DIMENSIONS IF INSTALLING OVER HAWS FOUNTAIN MODEL: 1311, 1501
 INSTALL THE 6700 ABOVE THE FOUNTAIN MOUNTING PLATE AT THE DIMENSION SHOWN FOR CORRECT BACKPANEL SPACING (IF APPLICABLE).
 BACK PANEL FOR BOTTLE FILLER (NOT SUPPLIED - OPTIONAL) IS NOT SHOWN FOR CLARITY.

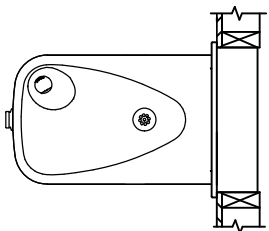
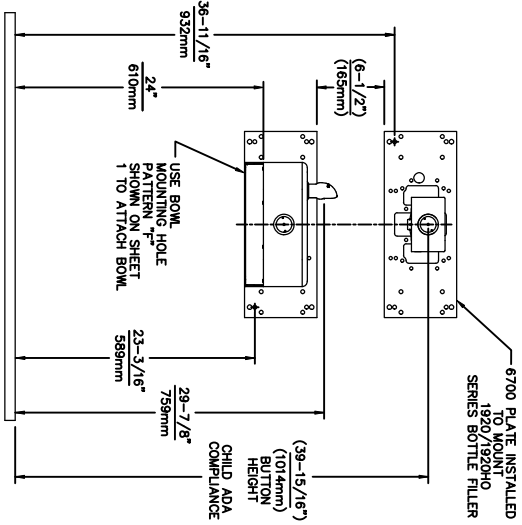
- NOTES:
 1. WHEN INSTALLING THIS UNIT, LOCAL, STATE OR FEDERAL CODES SHOULD BE ADHERED TO.
 2. BACK PANELS (OPTIONAL) NOT SHOWN FOR CLARITY.

6700 MOUNTING PLATE
 FOR USE WITH BOTTLE FILLER
 (SEE SHEET 1 FOR USE WITH
 DRINKING FOUNTAINS)

Since 1906

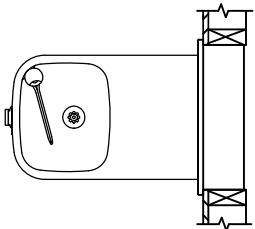
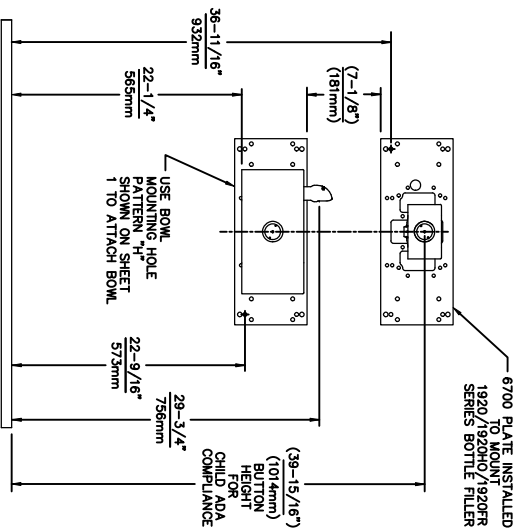
1458 KLEPPE LANE
 SPARKS, NEVADA, 89431
 (775) 359-4712 FAX (775) 359-7424
 E-MAIL: HAWS@HAWSCO.COM
 WEBSITE: WWW.HAWSCO.COM

| | |
|-------------------------|----------------------------|
| ECN NO. REVISED PER BY: | MODEL(S) |
| 5550 | 6700 |
| DATE: 6/13/11 | |
| CHK'D: FV | |
| DATE: 05/14/20 | |
| APPROVED: RH | |
| SCALE: 1:13 | DRAWING TYPE: INSTALLATION |
| SHEET 5 | OF 6 |
| PART NUMBER: 0002080016 | REVISION: 25 |



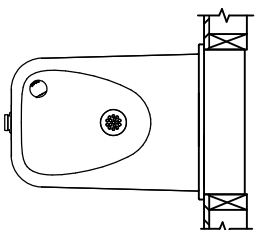
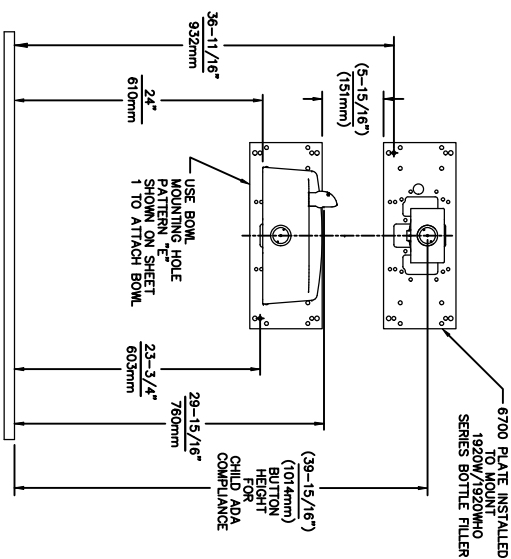
USE THESE DIMENSIONS WITH HAWMS
MODEL:
1107L
AT 24" CHILD HEIGHT *

6700 MOUNTING PLATE
FOR USE WITH BOTTLE FILLER AT
40" MAX. AND
DRINKING FOUNTAIN
AT 24" AND BUBBLER HEIGHT AT 30"
MAX. FOR CHILD ADA HEIGHT
(SEE SHEETS 1 & 2 FOR USE WITH
DRINKING FOUNTAIN AT 27" ADULT
HEIGHT DIMENSIONS)



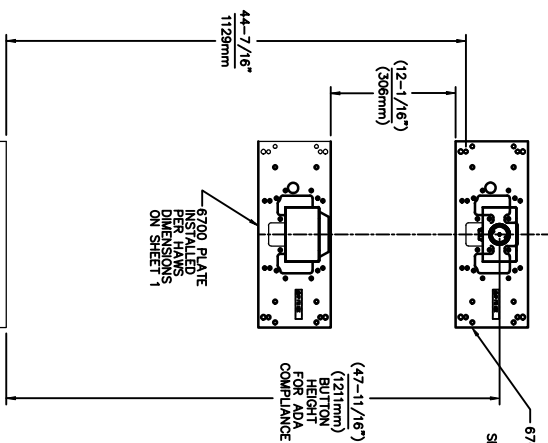
USE THESE DIMENSIONS WITH HAWMS
MODELS:
1109, 1109S14, 1109FR, 1109FRB, 1109FRP
AT 22-1/4" HEIGHT TO ACHIEVE 30" MAX.
CHILD ADA BUBBLER HEIGHT * NOTE:
MUST USE PARALLEL APPROACH WITH
THIS BOWL COMBINATION.

6700 MOUNTING PLATE
FOR USE WITH BOTTLE FILLER AT
40" MAX. AND
DRINKING FOUNTAIN
BUBBLER HEIGHT AT 30" MAX.
FOR CHILD ADA HEIGHT
MUST USE PARALLEL APPROACH
WITH THIS BOWL COMBINATION
(SEE SHEETS 1 & 2 FOR USE WITH
DRINKING FOUNTAIN AT 27" ADULT
HEIGHT DIMENSIONS)



USE THESE DIMENSIONS WITH HAWMS
MODEL:
1107L
AT 24" CHILD HEIGHT *

6700 MOUNTING PLATE
FOR USE WITH BOTTLE FILLER AT
40" MAX. AND
DRINKING FOUNTAIN
AT 24" AND BUBBLER HEIGHT AT 30"
MAX. FOR CHILD ADA HEIGHT
(SEE SHEETS 1 & 4 FOR USE WITH
DRINKING FOUNTAIN AT 27" ADULT
HEIGHT DIMENSIONS)



USE THESE MOUNTING DIMENSIONS IF
INSTALLING OVER HAWS WASTE DRIP
TRAY. MODEL: 9468 (SHOWN), 1922
(MODEL 1922 INCLUDES 1920 BOTTLE
FILLER, 1922 BACK PANELS, 1922
BP15, 1922 BACK PANELS (NOT SHOWN),
AT 27" ADULT HEIGHT.

INSTALL THE 6700 ABOVE THE
DRIP TRAY MOUNTING PLATE AT
THE DIMENSION SHOWN FOR CORRECT
BACK PANEL SPACING (IF APPLICABLE).
(NOT SUPPLIED - OPTIONAL) IS NOT
SHOWN FOR CLARITY.

6700 MOUNTING PLATE
FOR USE WITH BOTTLE FILLER
(SEE SHEET 1 FOR USE WITH
DRINKING FOUNTAINS
AND WASTE DRIP TRAY)

Since 1906

1455 KLEPPE LANE
SPARKS, NEVADA 89431
(775) 359-4712 FAX (775) 359-7424
E-MAIL: HAWS@HAWS.CO.COM
WEBSITE: WWW.HAWS.CO.COM

| | | | | |
|-----------|-------------|------------|---------------|---------------|
| ECN NO | REVISED PER | BY | MODEL(S) | 6700 |
| 5893 | 1 | ENR. 6/131 | | |
| DRAWN: | DATE: | CHK'D: | | |
| FV | 07/26/23 | JS | | |
| APPROVED: | DATE: | SCALE: | DRAWING TYPE: | INSTALLATION: |
| RH | 11/28/24 | 1:13 | | SHEET 6 OF 6 |