

FEATURES & BENEFITS

CONSTRUCTION

One-piece drinking fountain with low-profile child height ADA design made of 14 gauge Type 304 stainless steel with 1/4" (.6 cm) thick stainless back plate welded in, and vandal-resistant stainless bottom plate. Satin finish resists stains and corrosion.

ACCESS

Low profile designed bowl and integral trap allow for knee clearance for child ADA access (when installed at appropriate heights).

BUBBLER HEAD

Polished chrome-plated brass bubbler head with integral 11/16" dia. basin shank and stainless anti-rotation roll pin for vandal resistance strength. Shielded, angled stream opening provides a steady, sanitary source of drinking water at .45 gpm.

FOUNTAIN VALVES

The push-button activated valves offer the only all stainless steel valve body that is machined out of solid bar stock, is fully serviceable through the front of the push button assembly offering access to the water control cartridge and integral water supply strainer, and with front access to the water stream height adjustment for easy maintenance without having to remove the valve. Operating pressure range of 30 to 90 psi (2.1 to 6.2 bar).

INTEGRATED TRAP

All cast brass 1-1/4" NPT adjustable trap completely concealed inside bottom plate for easy installation and access.

OPTIONS

- Water Filter: Model 6480 filter kit with 3000 gallon carbon block filter, filter head, and mounting bracket.
- Support Frame: Model 6800 In-wall floor mounted fixture support legs, welded steel 4-bolt floor flanges, and supplied with 'U' bolts and hardware.
- Bottle Filler Stand: Model BTL1107, add-on stainless steel stand to place bottle on when 1920 bottle filler is used.

For more information, visit www.hawsc.com or call (888) 640-4297.



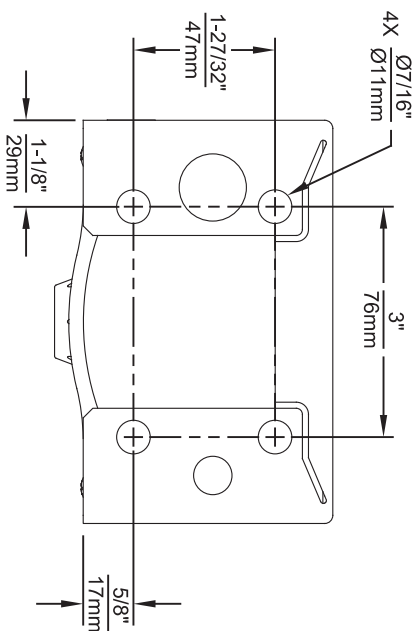
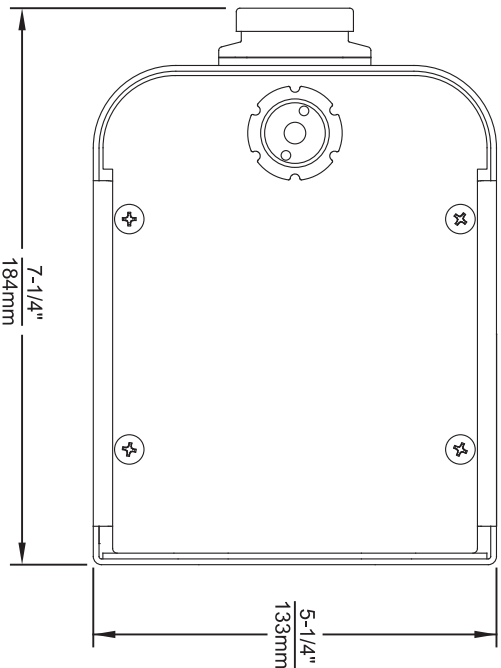
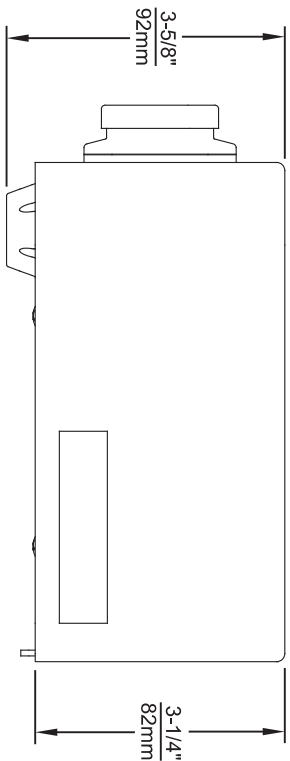
SPECIFICATIONS

Model 1107PCH wall-mounted vandal-resistant child height ADA drinking fountain and bottle filler shall include a 14-gauge Type 304 Stainless Steel satin-finish basin with integral 1/4" stainless steel mounting plate, 14 gauge bottle filler bracket, in-wall 3/16" thick steel mounting plates for the fountain and bottle filler, vandal-resistant push button operated stainless steel valves with front accessible cartridge and flow adjustment that provide 100% lead-free waterways, polished chrome plated brass vandal-resistant bubbler head with integral laminar anti-squirt flow, 1 gpm (3.78 L) laminar flow bottle filler, polished chrome-plated brass vandal-resistant waste strainer, vandal-resistant bottom plates, and 1-1/4" NPT integral trap. Unit is mounted to meet Child ADA specifications.

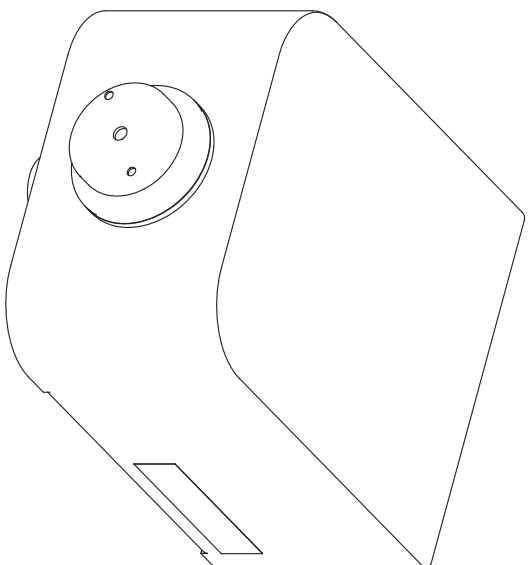
APPLICATIONS

Perfect for either public or private indoor/outdoor settings, the 1107PCH is a great fit in areas where aesthetics are important to the overall appeal of the architecture. Beautiful satin finish helps to maintain the fountains overall appeal. Specifically, this type of wall mounted drinking fountain may be placed in settings such as: schools and other locations in and around office buildings where the temperature remains above freezing. Model meets all current Federal Regulations for the disabled including those in the Americans with Disabilities Act. Haws manufactures drinking fountains, faucets and electric water coolers to be lead-free by all known definitions including NSF/ANSI/CAN 61-Section 9, NSF/ANSI/CAN 372, California Proposition 65, and the Federal Safe Drinking Water Act. Product is compliant to California Health and Safety Code 116875 (AB 1953-2006), and 116876 (AB 100) "NSF/ANSI/CAN 61: Q ≤ 1".





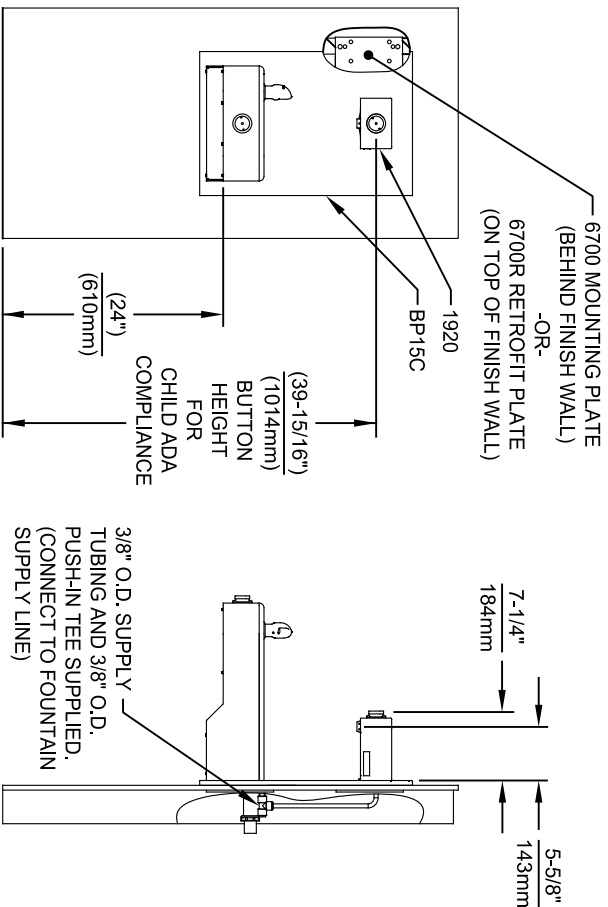
1920 SERIES MOUNTING HOLE LOCATIONS
(3/8\"-16 UNC MOUNTING HARDWARE NOT SUPPLIED)



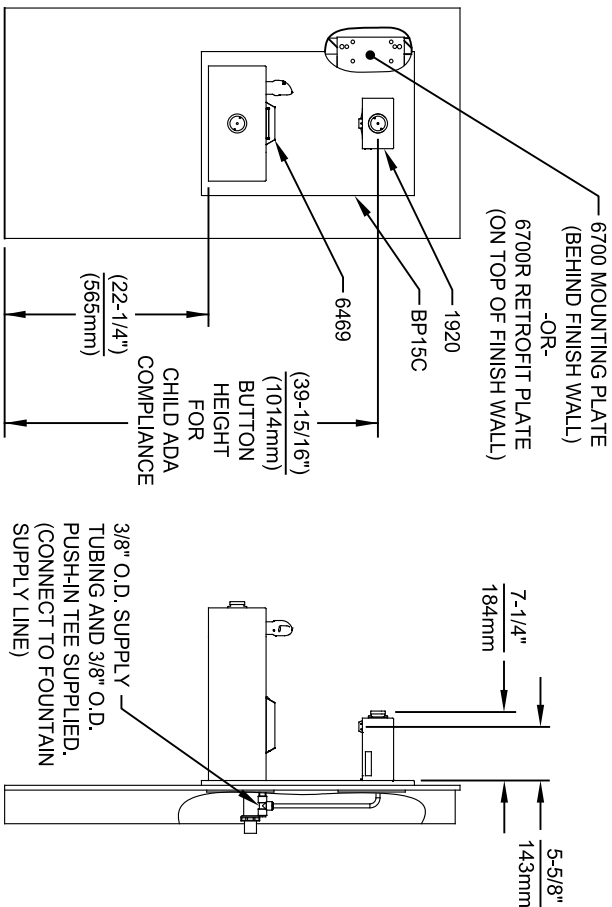
NOTES:

1. SEE SHEETS 2 THRU 7 FOR BOTTLE FILLER ADULT ADA HEIGHT APPLICATIONS AND SHEET 8 FOR CHILD ADA HEIGHT APPLICATIONS.
2. WHEN INSTALLING THIS UNIT, LOCAL, STATE OR FEDERAL CODES SHOULD BE ADHERED TO FOR INSTALLATION LOCATIONS, WASTE & SUPPLY REQUIREMENTS OTHER THAN SHOWN.

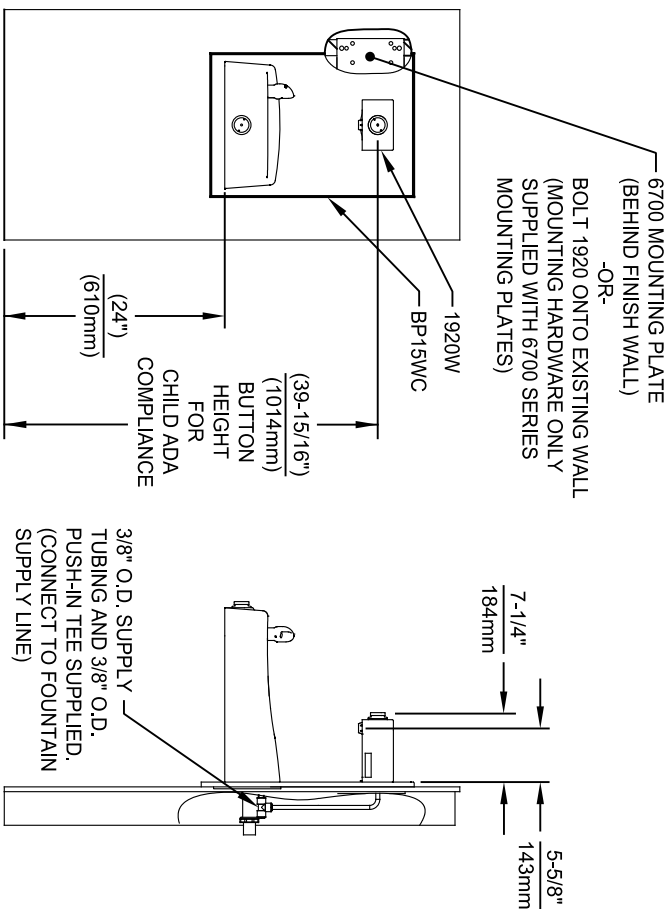
		1455 KLEPPLE LANE SPARKS, NEVADA 89431 (775) 359-4712 FAX (775) 359-7424 E-MAIL: HAWS@HAWSCO.COM WEBSITE: WWW.HAWSCO.COM	
EGN NO. REVISED PER BY: FV 5081 ECN: 5972 DRAWN: DATE: 05/25/16 DS: JC APPROVED: DATE: 04/15/24	MODEL(S) 1920/1920HPS/1920W	SCALE: N/A DRAWING TYPE:	INSTALLATION:
PART NUMBER 0510000490.D REVISION: 12	SIZE: A1 SHEET: 1 OF 8		



INSTALLATION ABOVE HAWS 1107L & H1107.8 SERIES



INSTALLATION ABOVE HAWS 1109, 1109.14 & H1109.8 SERIES



INSTALLATION ABOVE HAWS 1311

- NOTES:
1. HEIGHT DIMENSIONS SHOWN ARE FOR CHILD ADA APPLICATIONS:
- BOTTLE FILLER HEIGHT AT 40" MAX.
- DRINKING FOUNTAIN BUBBLER HEIGHT AT 30" MAX.
(SEE SHEETS 3, 4 & 5 FOR ADULT ADA HEIGHT DIMENSIONS)
 2. SEE SEPARATE INSTALLATION DRAWINGS FOR MOUNTING PLATES AND BACK PANELS (SHOWN FOR REFERENCE - NOT SUPPLIED).
 3. WHEN INSTALLING THIS UNIT, LOCAL, STATE OR FEDERAL CODES SHOULD BE ADHERED TO FOR INSTALLATION LOCATIONS, WASTE & SUPPLY REQUIREMENTS OTHER THAN SHOWN.



1455 KLEPPLELANE
SPARKS, NEVADA 89431
(775) 359-4712 FAX (775) 359-1424
E-MAIL: HAWS@HAWSCO.COM
WEBSITE: WWW.HAWSCO.COM

ECN NO. REVISED PER BY:	MODEL(S)	SCALE:	DATE:	INSTALLATION:	SIZE:	SHEET:
9807	1920/1920HPS/1920W	N/A	04/19/24		A1	8 OF 8
DRAWN: FV	DATE: 01/26/24	CHK'D: JC	DATE:	DRAWING TYPE:		12
REV: FV						
PART NUMBER:	05110000490 D	REVISION:				