

FEATURES & BENEFITS

CONSTRUCTION

Unit is made of 18 gauge Type 304 stainless steel with a satin finish that resists stains and corrosion, and has soft, rounded corners. Unit features stainless steel satin finish back panel, vandal-resistant bottom plate, and 1-1/4" integral trap.

FREEZE-RESISTANT VALVE

Fully engineered system with the pneumatic-operated, freeze-resistant valve mounted in a cabinet that is installed on the inside wall where room temperature does not drop below 50° F (10° C). When valve goes to off position, water left in supply line between valve and bubbler drains back into waste inside cabinet, protecting the unit from freezing, and allowing fountain to function year-round.

MOUNTING

Model 6800 universal in-wall 3/16" thick steel mounting support for use with most fountains.

BUBBLER HEAD

Polished chrome-plated brass bubbler head with integral 11/16" dia. basin shank and stainless anti-rotation roll pin for vandal resistance strength. Shielded, angled stream opening provides a steady, sanitary source of drinking water at .45 gpm.

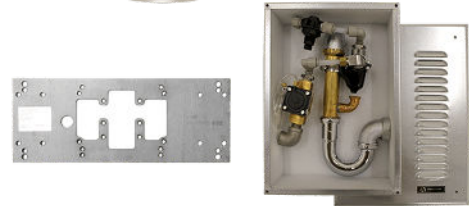
VANDAL-RESISTANT

The bubbler head, push button, drain strainer and bottom plate are locked in place, discouraging unwanted vandal tampering.

OPTIONS

- Freeze-Resistant Bottle Filler: Model 1920FR, freeze-resistant bottle filler can be a stand-alone wall mounted station, or mounted over the 1109FR & 1119FR series fountains.
- Back Panel: Model BP3, satin finish stainless steel back panel.

For more information, visit www.hawsco.com or call (888) 640-4297.



Mounting Plate and Freeze Vales Included

SPECIFICATIONS

Model 1109FRB wall mounted vandal-resistant barrier-free drinking fountain shall include an 18 gauge Type 304 Stainless Steel satin finish basin, In-wall 3/16" thick steel mounting plate adds extra wall support when mounting the fountain, polished chrome-plated brass vandal-resistant bubbler head, polished chrome-plated brass vandal-resistant push-button, a pneumatic valve installed on the inside wall where room temperatures do not drop below 50° F (10° C), self-draining water lines which protect the unit from freezing, polished chrome-plated brass vandal resistant waste strainer, vandal-resistant stainless bottom plate, and 1-1/4" O.D. (3.2 cm) waste pipe.

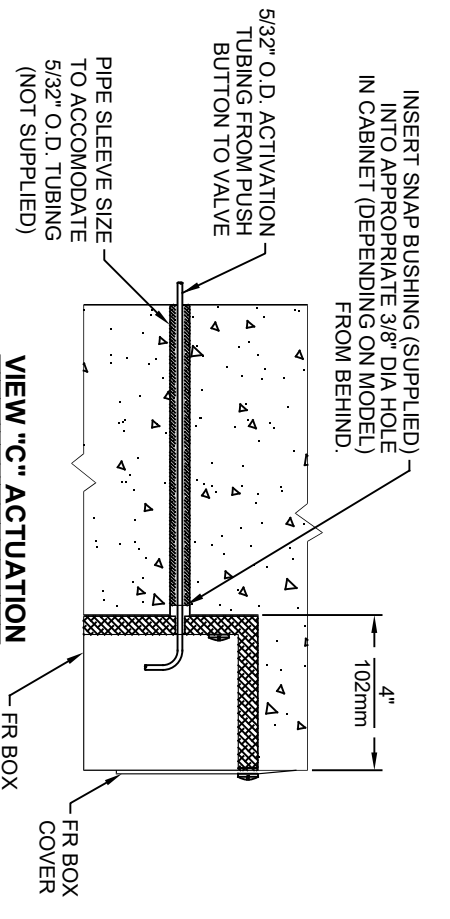
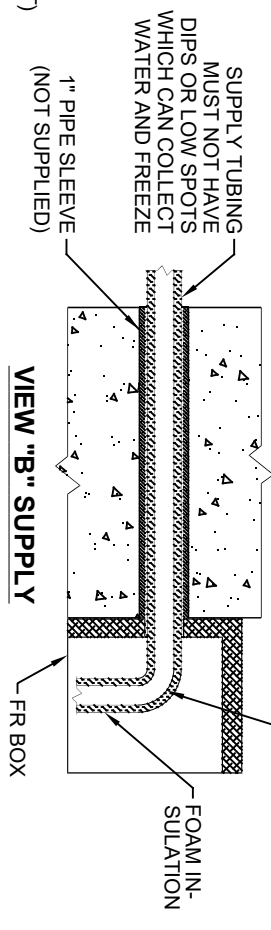
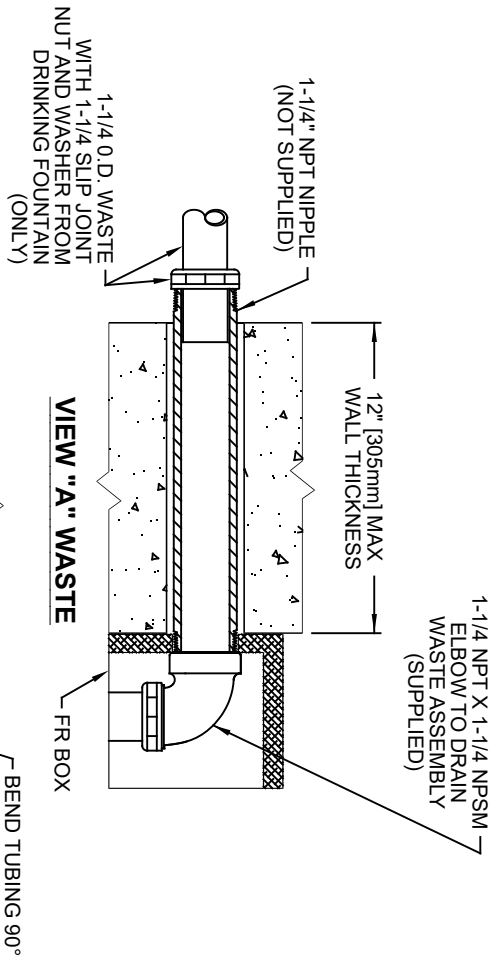
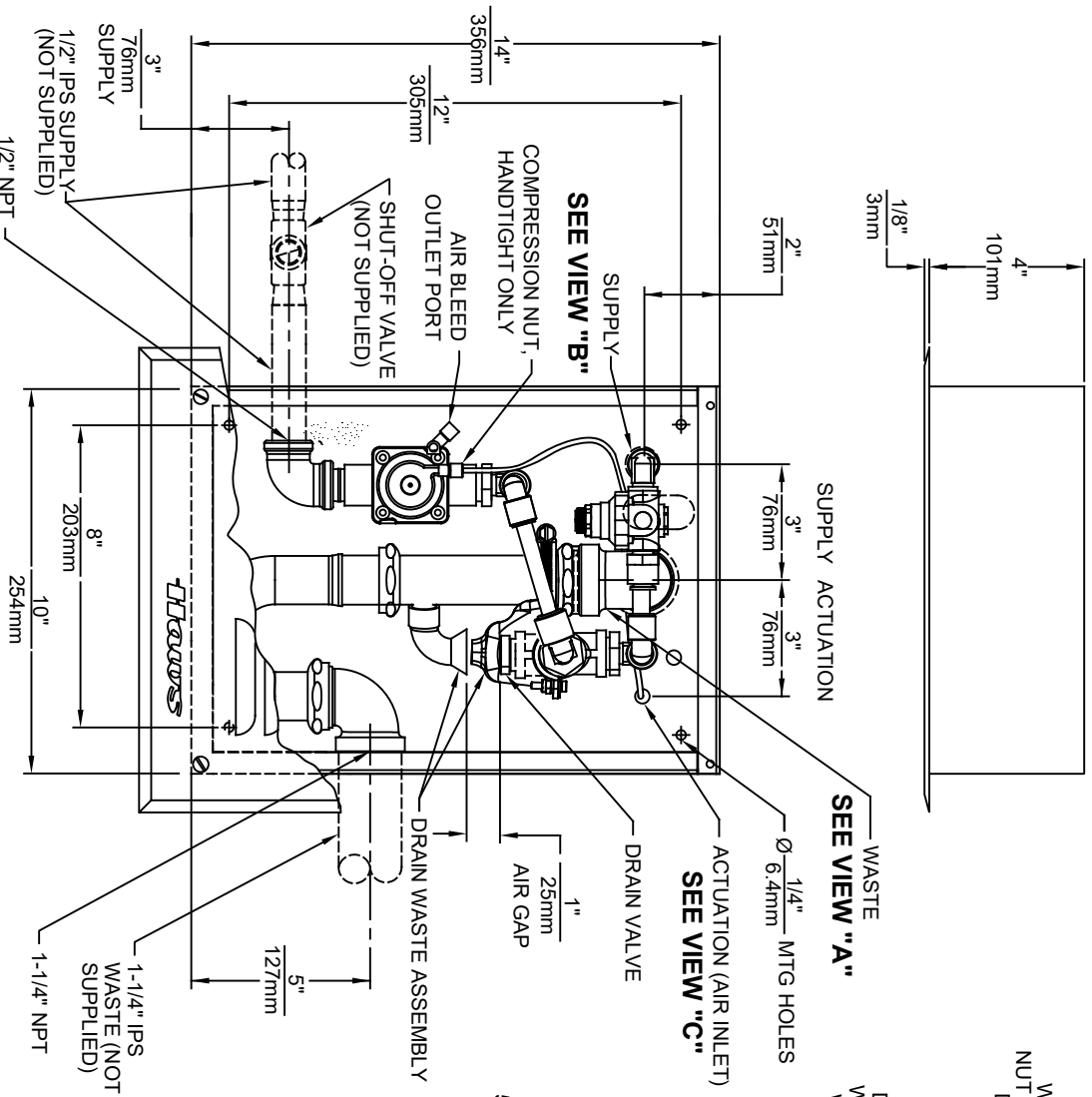
APPLICATIONS

Perfect for either public or private outdoor settings, Model 1109FRB is a great fit in areas where aesthetics are important to the overall appeal of the architecture. Beautiful satin finish helps to maintain the fountains overall appeal. Specifically, this type of wall mounted drinking fountain may be placed in settings such as: parks, schools, and other facilities where the temperature may drop into freezing conditions. Model meets all current Federal Regulations for the disabled including those in the Americans with Disabilities Act. Haws manufactures drinking fountains, faucets and electric water coolers to be lead-free by all known definitions including NSF/ANSI/CAN 61- Section 9, NSF/ANSI/CAN 372, California Proposition 65, and the Federal Safe Drinking Water Act. Product is compliant to California Health and Safety Code 116875 (AB 1953-2006), and 116876 (AB 100) "NSF/ANSI/CAN 61: Q ≤ 1".



NOTES:

1. UNIT MAY BE RECESSED MOUNTED IN WALL AS SHOWN IN VIEW "C" OR SURFACE MOUNTED AS SHOWN IN VIEWS "A" AND "B".
2. VALVE MUST BE INSTALLED IN SPACE THAT MAINTAINS A MINIMUM OF 50°F (10°C).
3. DRINKING FOUNTAIN AND BOTTLE FILLER MODELS 1109FR & 1920FR EACH REQUIRE A SEPARATE 6521FR UNIT. DUAL DRINKING FOUNTAIN MODEL 1119FR REQUIRES TWO SEPARATE 6521FR UNITS. THE MODELS LISTED HERE ARE AVAILABLE SEPARATELY OR AS PART OF PRODUCT BUNDLES.



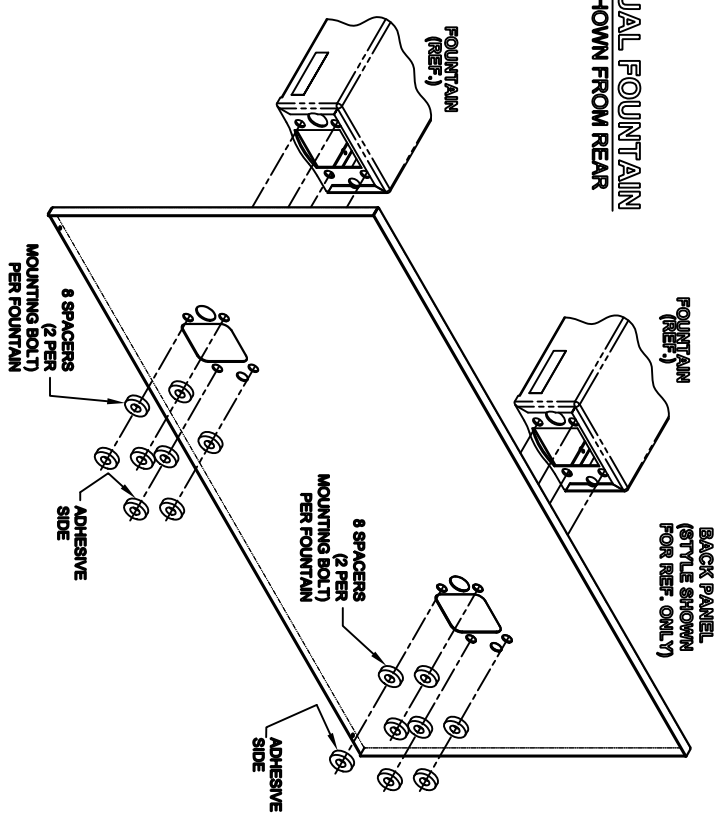
Haws

1435 KLEPPPE LANE
SPARKS, NEVADA 89431
(775) 359-4712 FAX (755) 359-7424
E-MAIL: HAWS@HAWS.CO.COM
WEBSITE: WWW.HAWS.CO.COM

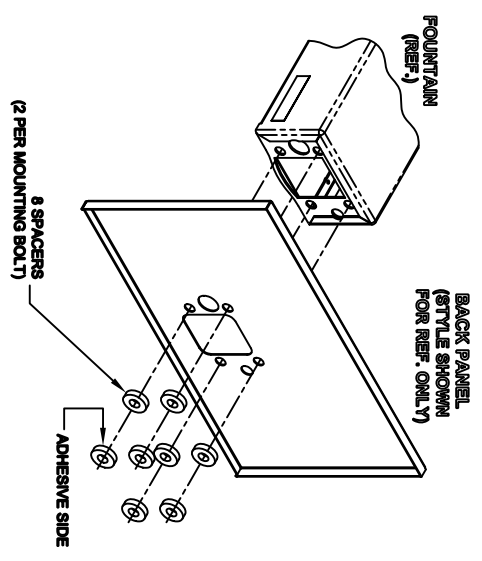
ECN NO	REVISED PER REV.	DATE	SCALE	DRAWING TYPE	INSTALLATION	PART NUMBER
ECN-5799	J.S.	09/92	1:5			0002077820 D
DRAWN	DATE	CHK'D				DRAWING NO.
C.L.	09/92					09306A00
APPROVED	DATE					REV
F.V.	07/09/22					18
MODEL(S)	6521FR					

THIS DOCUMENT IS TRUE AND CORRECT AT TIME OF PUBLICATION. CONTAINED PRODUCT IMPROVEMENTS HAVE SPECIFICATIONS AND MEASUREMENTS SUBJECT TO CHANGE WITHOUT NOTICE.

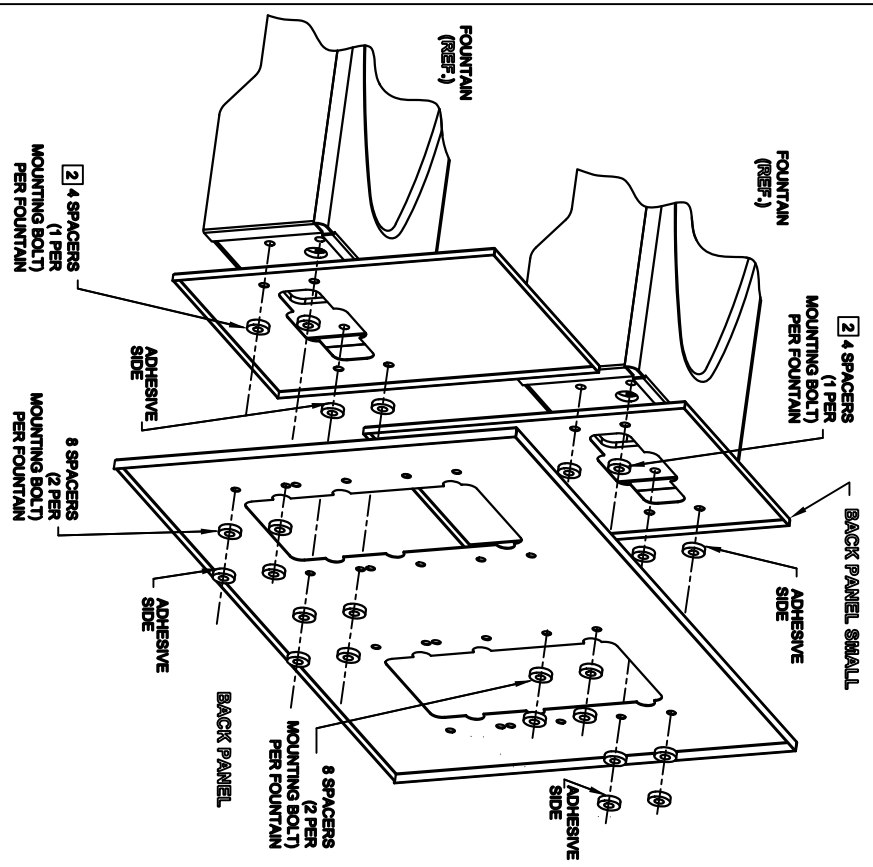
DUAL FOUNTAIN
SHOWN FROM REAR



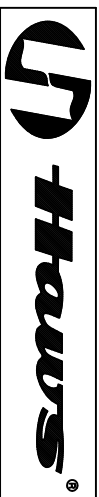
- NOTES:**
- 1 ON ALL BACK PANEL MODELS, SPACERS ARE NOT USED WHEN A MOUNTING FRAME IS USED EXCEPT AS SPECIFIED IN NOTE 2
 - 2 INDICATED SPACERS ARE USED WITH MOUNTING FRAME (DUAL ADJUSTABLE)



SINGLE FOUNTAIN
SHOWN FROM REAR



DUAL FOUNTAIN ADJUSTABLE
SHOWN FROM REAR



1465 KLEPPE LANE
SPARKS, NEVADA, 89431
(775) 399-4712 FAX (759) 399-1424
E-MAIL: HAWS@HAWS.CO.COM
WEBSITE: WWW.HAWS.CO.COM

ECN NO. REVISED PER BY:	MODEL(S)	BACK PANEL
DRAWN: []	DATE: []	SPACER INSTRUCTIONS
CHKD: []	DATE: []	INSTALLATION
APPROVED: []	DATE: []	SIZE: A
	SCALE: 1:10	DRAWING TYPE:
		SHEET: 1 OF 1
PART NUMBER:	0002082219	REV: 5