

FEATURES & BENEFITS

CONSTRUCTION

One-piece drinking fountains with low-profile design made of 14 gauge Type 304 stainless steel with 1/4" (.6 cm) thick stainless back plates welded in, and vandal-resistant stainless bottom plates.

BOTTLE FILLER

Vandal-resistant, 14-gauge Type 304 stainless steel bottle filler housing with push button operation and 1 gpm (3.78 L) laminar flow.

ADA COMPLIANCE

ADA-compliant bottle filling station and dual-height high low drinking fountain required for wheel chair use, and for the standing person.

BUBBLER HEADS

Polished chrome-plated brass bubbler head with integral 11/16" dia. basin shank and stainless anti-rotation roll pin for vandal resistance strength. Shielded, angled stream opening provides a steady, sanitary source of drinking water at .45 gpm.

FOUNTAIN VALVES

The push-button activated valves have all stainless steel bodies, with chrome plated brass push button assemblies which allow for front access to water stream adjustment, water control cartridge, and water supply strainer replacement without having to go through the bottom Plate. Operating pressure range of 30 to 90 psi (2.1 to 6.2 bar).

VANDAL RESISTANT

The bubbler heads, push buttons, drain strainers and bottom plates are locked in place, discouraging unwanted vandal tampering.

OPTIONS

- Water Filter: Model 6480 filter kit with 3000 gallon carbon block filter, filter head, and mounting bracket.
- Mounting Plate: Model 6700, in-wall mounting plate for model 1920.
- Mounting Plate: Model 6700R, on-wall mounting plate for model 1920.
- Mounting Plate: Model 6700.4, in-wall mounting plate for model 1117LN.
- Support Frame: Model 6800 In-wall floor mounted fixture support legs, welded steel 4-bolt floor flanges, and supplied with 'U' bolts and hardware.

For more information, visit www.hawsco.com or call (888) 640-4297.



SPECIFICATIONS

1117LN / 1920 / BP32

Order these items to make up the Model 1117LN-1920 dual fountain, stainless steel bottle filler and stainless steel back panels shown above.

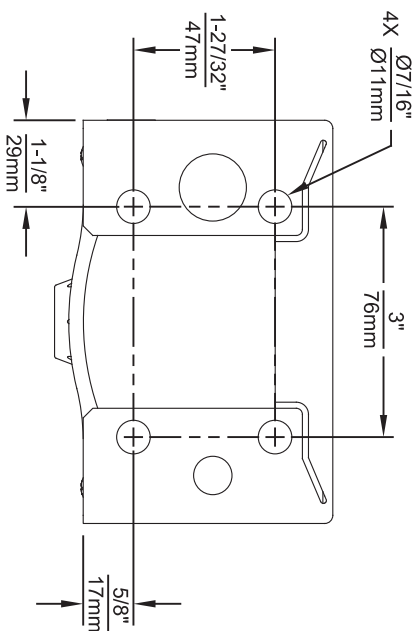
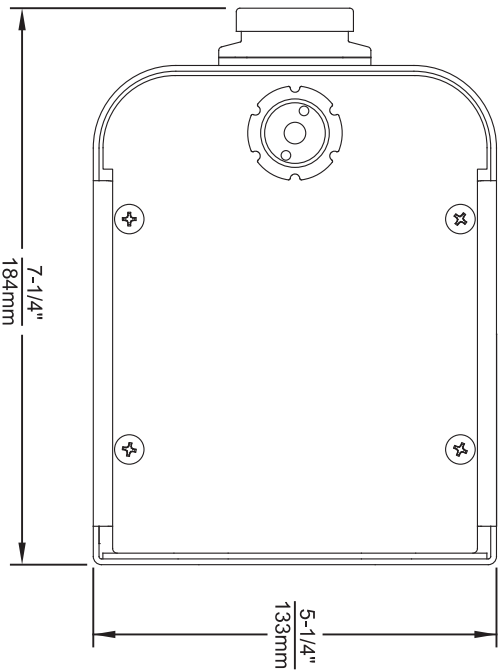
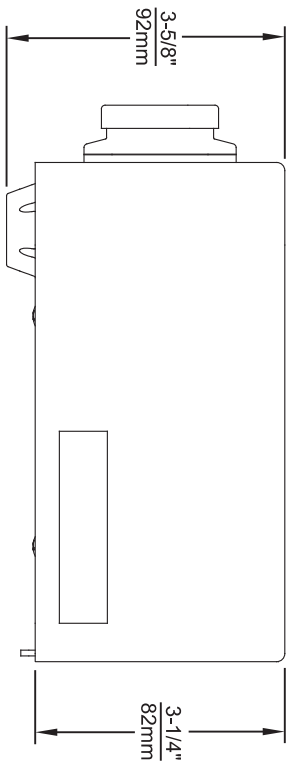
FOR INDOOR USE ONLY

APPLICATIONS

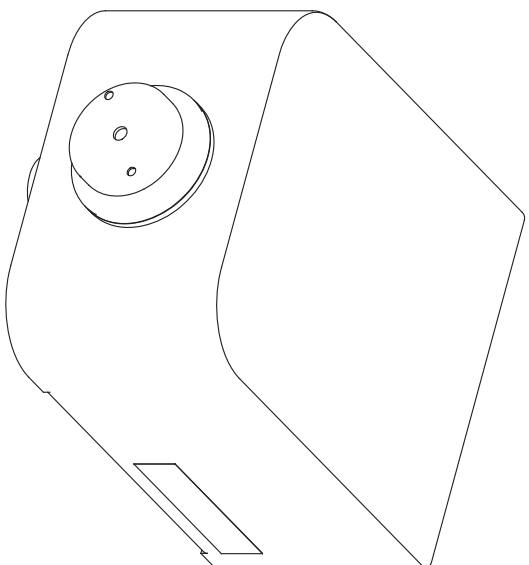
Model 1117LN-1920 low profile wall mounted vandal-resistant ADA drinking fountain and bottle filler shall include dual 14 gauge Type 304 Stainless Steel satin finish basins with integral 1/4" (.6 cm) thick stainless steel back plates, vandal-resistant push button operated stainless steel valves with front accessible cartridge, in-line strainer and flow adjustment provide 100% lead free waterways, polished chrome plated brass vandal-resistant bubbler heads, 1 gpm (3.78 L) laminar flow bottle filler, polished chrome-plated brass vandal-resistant waste strainers, vandal-resistant bottom plates, stainless steel satin finish back panels, and 1-1/4" NPT concealed all cast-brass traps. The patented design allows the unit to be mounted to meet ADA or Child ADA specifications. Manufactured to be lead-free by all known definitions including NSF/ ANSI/CAN 61-Section 9, NSF/ANSI/ CAN 372, California Proposition 65, and the Federal Safe Drinking Water Act. Product is compliant to California Health and Safety Code 116875 (AB 1953-2006), and 116876 (AB 100) "NSF/ANSI/CAN 61: Q ≤ 1".

The bottle filler requires a mounting plate; either the Haws model 6700 in-wall or the 6700R on-wall support plate.





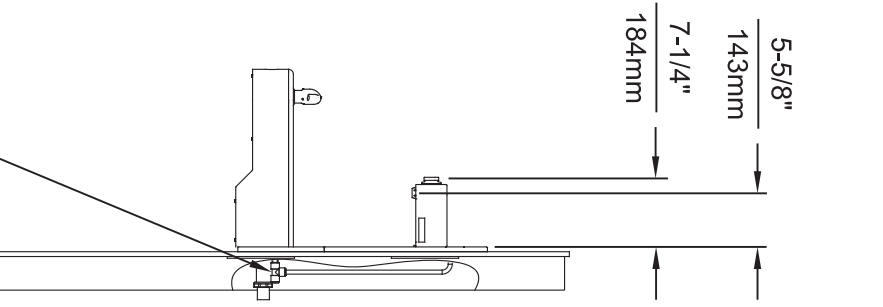
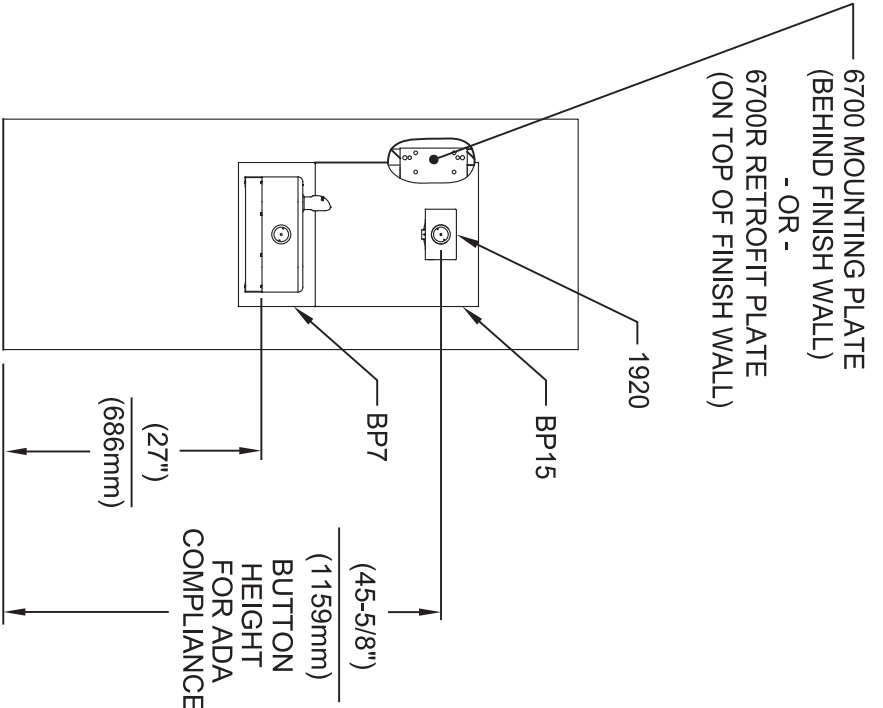
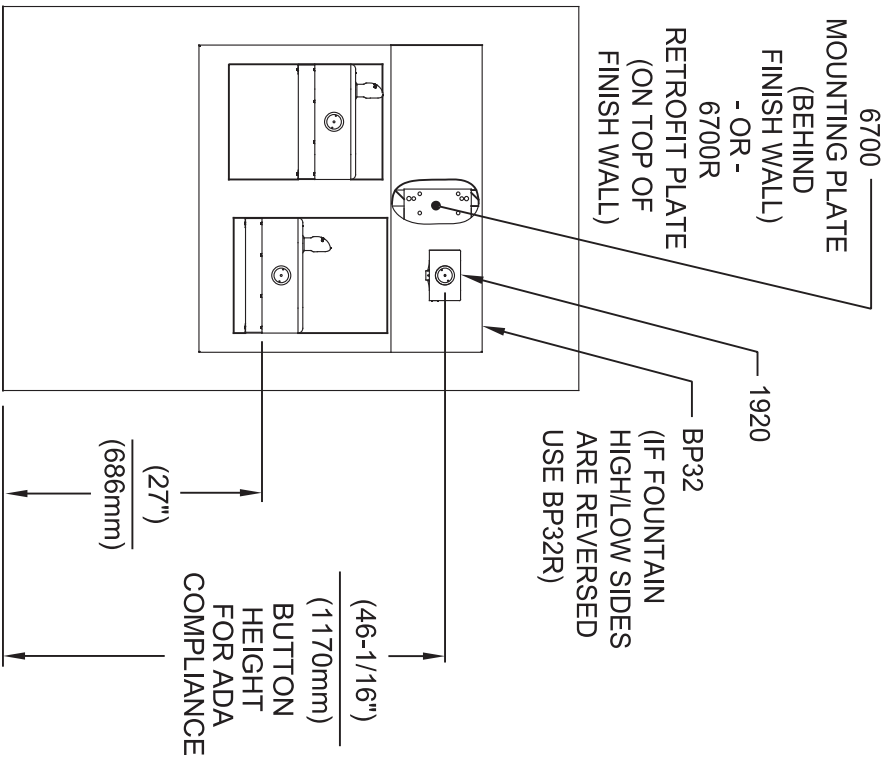
1920 SERIES MOUNTING HOLE LOCATIONS
(3/8\"-16 UNC MOUNTING HARDWARE NOT SUPPLIED)



NOTES:

1. SEE SHEETS 2 THRU 7 FOR BOTTLE FILLER ADULT ADA HEIGHT APPLICATIONS AND SHEET 8 FOR CHILD ADA HEIGHT APPLICATIONS.
2. WHEN INSTALLING THIS UNIT, LOCAL, STATE OR FEDERAL CODES SHOULD BE ADHERED TO FOR INSTALLATION LOCATIONS, WASTE & SUPPLY REQUIREMENTS OTHER THAN SHOWN.

		1455 KLEPPLE LANE SPARKS, NEVADA 89431 (775) 359-4712 FAX (775) 359-7424 E-MAIL: HAWS@HAWSCO.COM WEBSITE: WWW.HAWSCO.COM	
EGN NO. REVISED PER BY: 5081 ECN: 9972 FV	MODEL(S) 1920/1920HPS/1920W	SCALE: N/A	DRAWING TYPE:
DRAWN: DS DATE: 05/25/16 CHKD: JC	DATE: 04/19/24	SIZE: A1	SHEET: 1 OF 8
PART NUMBER 0510000490.D	REVISION 12		

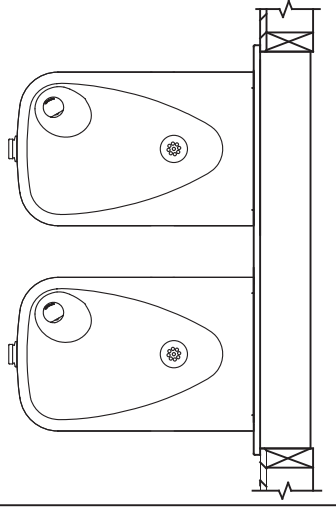


INSTALLATION ABOVE HAWS 1117L & H1117.8 SERIES

**INSTALLATION ABOVE HAWS 1107L & H1107.8 SERIES
SEE SHEET 8 FOR INSTALLATION AT CHILD HEIGHT**

* IF YOUR FOUNTAIN IS THIS STYLE USE THESE DIMENSIONS

1. SEE SEPARATE INSTALLATION DRAWINGS FOR MOUNTING PLATES AND BACK PANELS (SHOWN FOR REFERENCE - NOT SUPPLIED).
2. WHEN INSTALLING THIS UNIT, LOCAL, STATE OR FEDERAL CODES SHOULD BE ADHERED TO FOR INSTALLATION LOCATIONS, WASTE & SUPPLY REQUIREMENTS OTHER THAN SHOWN.



3/8" O.D. SUPPLY TUBING AND 3/8" O.D. PUSH-IN TEE SUPPLIED. (CONNECT TO FOUNTAIN SUPPLY LINE)

Haws
Since 1906

1455 KLEPPLELANE
SPARKS, NEVADA 89431
(775) 359-4712 FAX (775) 359-424
E-MAIL: HAWS@HAWS.CO.COM
WEBSITE: WWW.HAWS.CO.COM

MODEL(S)
1920/1920HPS/1920W

SCALE: N/A DRAWING TYPE: INSTALLATION

SIZE: A1 SHEET: 4 OF 8

EGN NO. REVISED PER BY:	DATE:	SCALE:	N/A	DRAWING TYPE:	INSTALLATION	SIZE:	A1	SHEET:	4 OF 8
5081	01/30/17	DATE:	04/19/24	DATE:	04/19/24	SCALE:	N/A	DRAWING TYPE:	INSTALLATION
DRAWN:	CHK'D:	DATE:	04/19/24	DATE:	04/19/24	SCALE:	N/A	DRAWING TYPE:	INSTALLATION
MA	JC	DATE:	04/19/24	DATE:	04/19/24	SCALE:	N/A	DRAWING TYPE:	INSTALLATION
PART NUMBER		0510000490.D		REVISION		12			

