

## FEATURES & BENEFITS

### CONSTRUCTION

Fountain is made of 18 gauge and bottle filler, 14 gauge Type 304 stainless steel with a satin finish that resists stains and corrosion, and have soft, rounded corners. Unit features stainless steel satin finish back panels, vandal-resistant bottom plates, and 1-1/4" integral trap.

### FREEZE-RESISTANT VALVES

Fully engineered system with the pneumatic-operated, freeze-resistant valves mounted in cabinets that are installed on the inside wall where room temperature does not drop below 50° F (10° C). When valves goes to off position, water left in supply line between valve and bubbler or bottle filler drains back into waste inside cabinet, protecting the unit from freezing, and allowing fountain to function year-round.

### MOUNTING

Included: In-wall 3/16" thick steel mounting plates add extra wall support when mounting the fountains and bottle filler.

### BUBBLER HEADS

Polished chrome-plated brass bubbler heads with integral basin shank for added strength. Shielded, angled stream opening provides a steady, sanitary source of drinking water at .45 gpm.

### VANDAL RESISTANT

The bubbler heads, push buttons, drain strainers and bottom plates are locked in place, discouraging unwanted vandal tampering.

### BACK PANELS

Stainless steel back panels helps to protect the wall from inadvertent splashing, and its decorative satin finish increases location visibility.

## OPTIONS

- Cane Detection, Floor Mounted: Model SK6, floor mounted cane detection for the Haws Hi-Lo drinking fountains.

For more information, visit [www.hawsco.com](http://www.hawsco.com) or call (888) 640-4297.



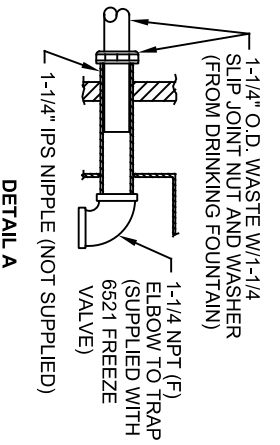
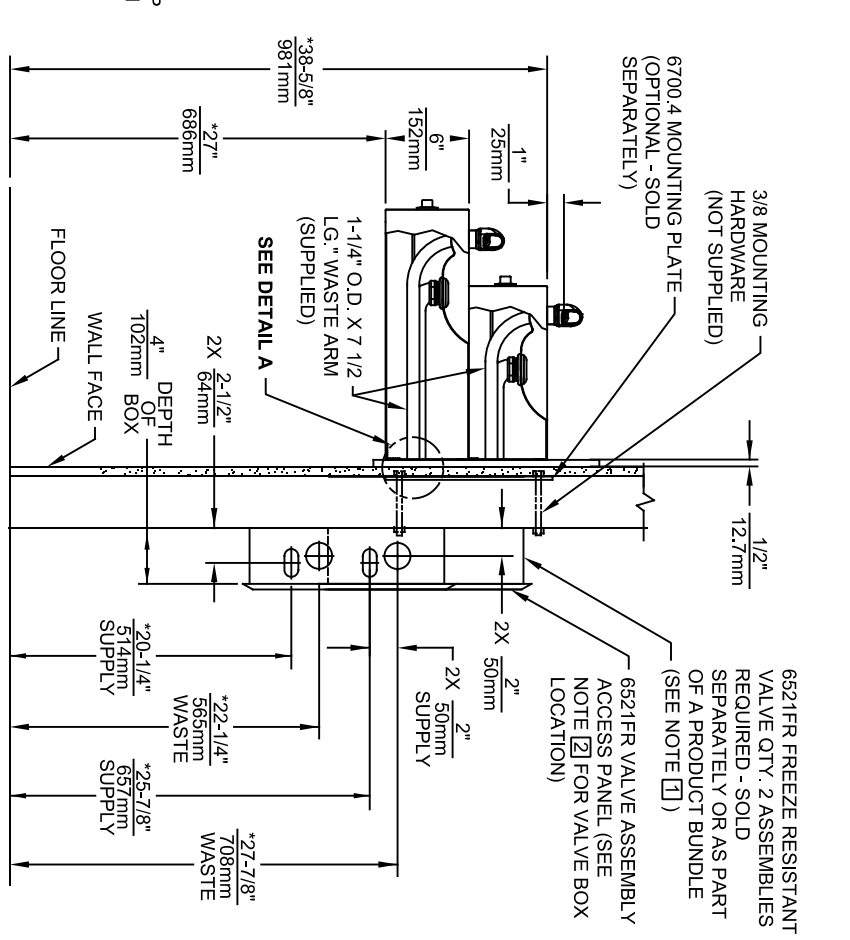
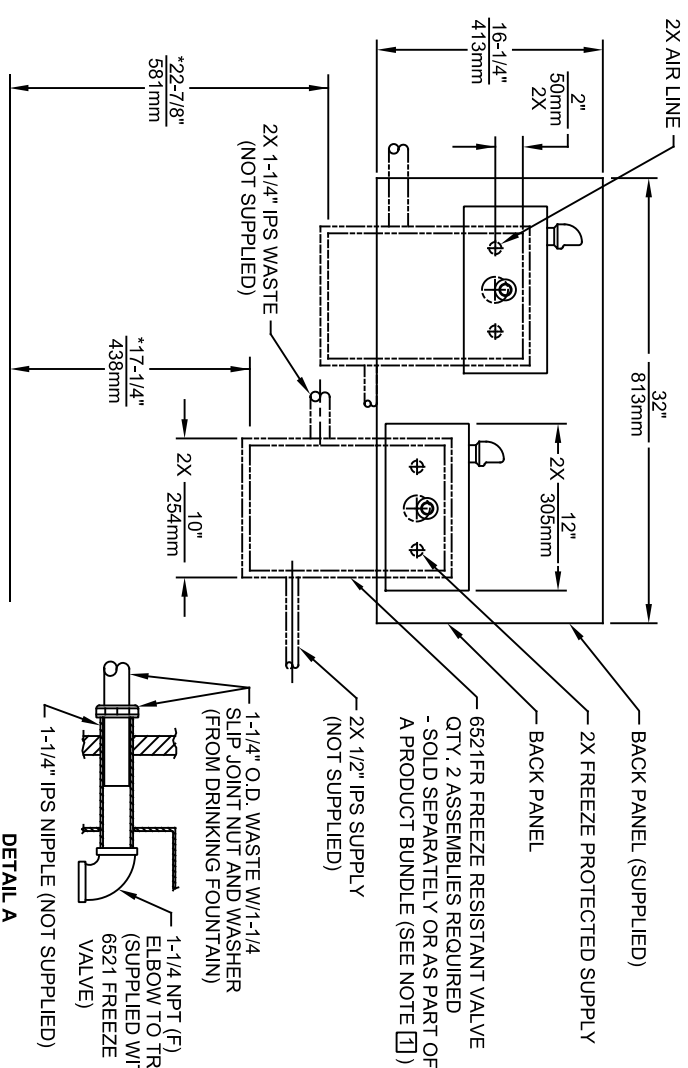
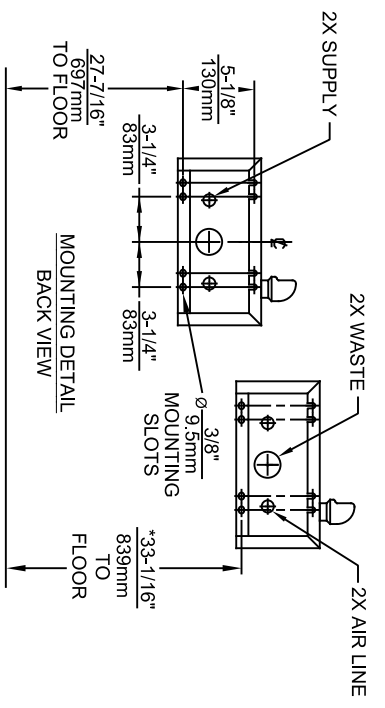
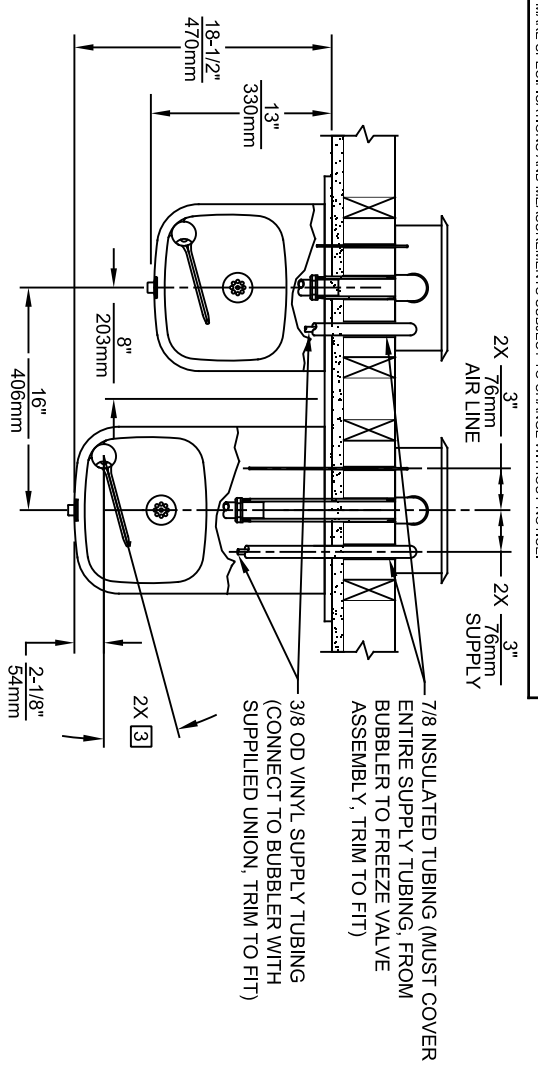
## SPECIFICATIONS

Model 1119FRP vandal-resistant wall mounted barrier-free freeze-resistant drinking fountain and bottle filler shall include dual 18 gauge Type 304 Stainless Steel satin finish basins, 14 gauge Type 304 Stainless Steel bottle filler bracket, In-wall 3/16" thick steel mounting plates add extra wall support when mounting the fountains and bottle filler, polished chrome-plated brass vandal-resistant bubbler heads, 1 gpm (3.78 L) laminar flow bottle filler, polished chrome-plated brass push-buttons which operate pneumatic valves housed in insulated cabinets, installed on the inside wall where room temperatures do not drop below 50° F (10° C), self-draining water lines protect the unit from freezing, polished chrome-plated brass vandal-resistant waste strainers, stainless steel satin finish back panels, high and low fountain mounting levels, and 1-1/4" O.D. waste pipes.

## APPLICATIONS


Perfect for either public or private outdoor settings, Model 1119FRP is a great fit in areas where aesthetics are important to the overall appeal of the architecture. This series is precisely mounted, making it a nice addition to any surrounding. Beautiful satin finish helps to maintain the fountains overall appeal so it always remains looking as new as it did when it was installed. Specifically, this type of wall mounted drinking fountain may be placed in settings such as: parks, schools, and other facilities where the temperature may drop into freezing conditions. Model meets all current Federal Regulations for the disabled including those in the Americans with Disabilities Act. Haws manufactures drinking fountains, faucets and electric water coolers to be lead-free by all known definitions including NSF/ANSI/CAN 61- Section 9, NSF/ANSI/CAN 372, California Proposition 65, and the Federal Safe Drinking Water Act. Product is compliant to California Health and Safety Code 116875 (AB 1953-2006), and 116876 (AB 100) "NSF/ANSI/CAN 61: Q ≤ 1".





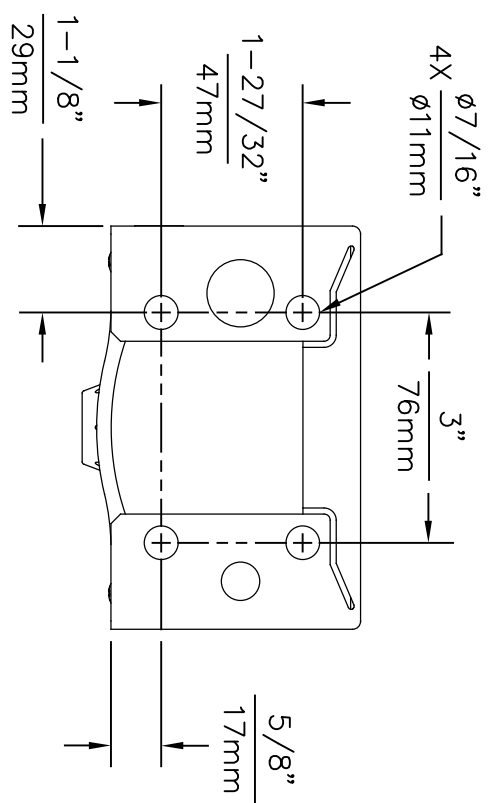
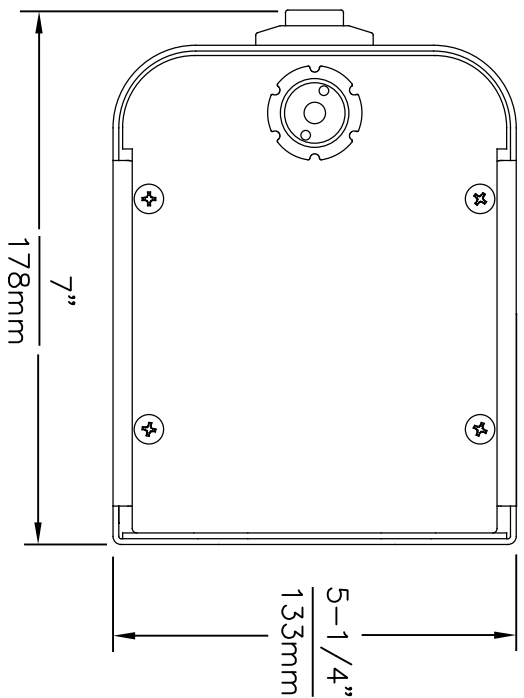
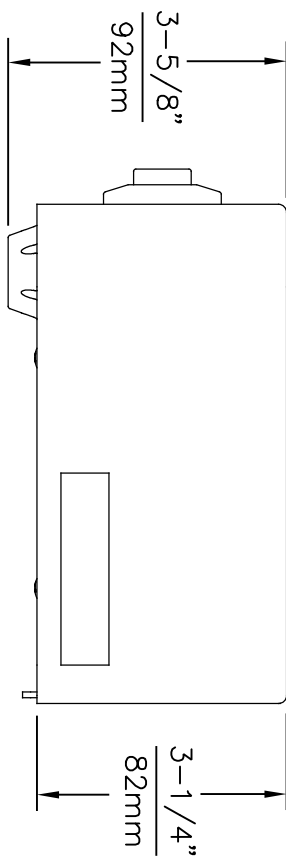
- NOTES:
- 1 PRODUCT BUNDLES AVAILABLE:  
 MODEL 1119FRB (QTY. 1 EACH 1119FR, 6700.4 & QTY. 2 EACH 6521FR),  
 MODEL 1119FRP (QTY. 1 EACH 1119FR, 6700.4, 6700. BP32\*, 1920FR\* &  
 6469\* (\*NOT SHOWN), & QTY. 3 EACH 6521FR). SEE 6521FR  
 INSTALLATION INSTRUCTIONS FOR CONNECTION DETAILS.
  - 2 VALVE ASSEMBLY MUST BE INSTALLED IN A  
 WARM AREA. PROVISIONS SHOULD BE MADE  
 TO ALLOW ACCESS TO ACCESS PANEL
  - 3 MAXIMUM ADJUSTABLE RANGE IS 15° FROM  
 PARALLEL TO BACK OF WALL.
  - 4. HOLD ROUGH-IN DIMENSIONS ± 1/4" (6.4mm).
  - 5. \* WHEN INSTALLING THIS UNIT LOCAL, STATE  
 OR FEDERAL CODES SHOULD BE ADHERED  
 TO. FOR INSTALLATION HEIGHTS OTHER  
 THAN SHOWN, DIMENSIONS MARKED (\*)  
 MUST BE ADJUSTED ACCORDINGLY.

©2024 Haws Corporation - All Rights Reserved. HAWS® and other trademarks used in these materials are the exclusive property of Haws Corporation.

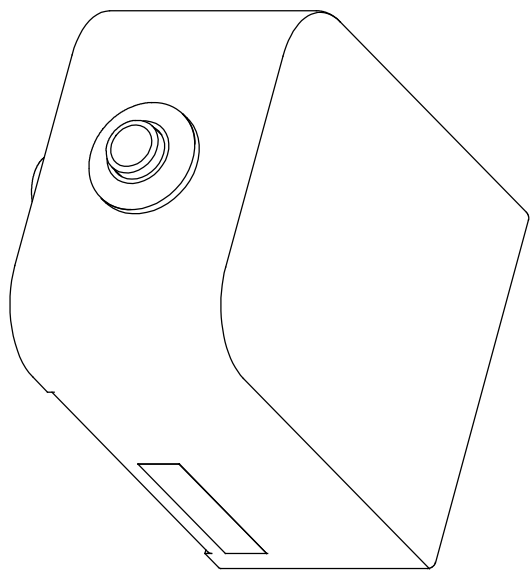


**Haws**  
Since 1906

ECON. NO. REVISED PER BY: MODEL(S)		1456 KLEPPE LANE	
DRAWN: FELIX V.	DATE: 6/10/98	CHKD: KM	SPARKS, NEVADA, 89431
APPROVED: EV	DATE: 10/17/24	SCALE: 1:14.5	(775) 359-4712 FAX (775) 359-7424
INSTALLATION: 1119FR		E-MAIL: HAWS@HAWS.CO.COM	
SHEET 1 OF 1		WEBSITE: WWW.HAWS.CO.COM	
REVISION: 16		PART NUMBER: 0002076627.D	



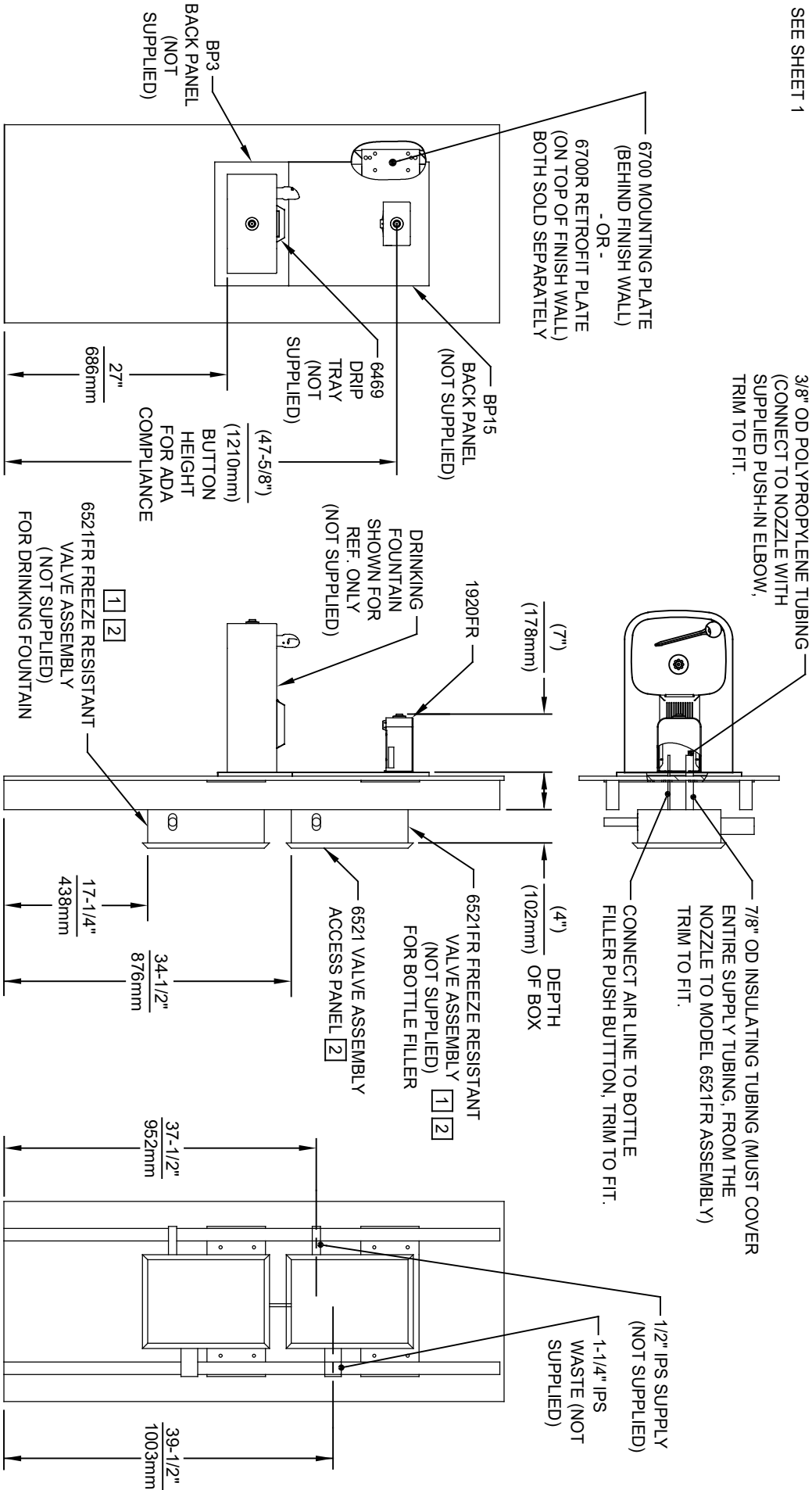
1920FR MOUNTING HOLE LOCATIONS



- NOTES:
- 1 THIS BOTTLE FILLER REQUIRES THE USE OF MODEL 6521FR FREEZE RESISTANT VALVE ASSEMBLY (SOLD SEPERATELY OR AS PART OF PRODUCT BUNDLES).
  - 2 VALVE ASSEMBLY MUST BE INSTALLED IN A WARM AREA. PROVISIONS SHOULD BE MADE TO ALLOW ACCESS TO THE ACCESS PANEL.
  - 3 SEE SEPERATE INSTALLATION DRAWINGS FOR MOUNTING PLATES, AND BACK PANELS (SHOWN FOR REFERENCE ONLY - NOT SUPPLIED).
  - 4 WHEN INSTALLING THIS UNIT, LOCAL, STATE OR FEDERAL CODES SHOULD BE ADHERED TO FOR INSTALLATION LOCATIONS, WASTE & SUPPLY REQUIREMENTS OTHER THAN SHOWN.

		1455 KLEPPLE LANE SPARKS, NEVADA 89431 (775) 359-4712 FAX (775) 359-7424 E-MAIL: HAWS@HAWSCO.COM WEBSITE: WWW.HAWSCO.COM	
ECN NO. REVISED PER BY:	MODEL(S)	SCALE:	INSTALLATION:
9081 ECN: 5883	1920FR	N/A	
DATE: 05/25/16		DRAWING TYPE:	SIZE: A1 SHEET: 1 OF 3
CHKD: KAM			
APPROVED: FV			
DATE: 09/06/23			
DRAWN: DS			
DATE: 05/25/16			
CHKD: KAM			
APPROVED: FV			
DATE: 09/06/23			
DRAWN: DS			
DATE: 05/25/16			
CHKD: KAM			
APPROVED: FV			
DATE: 09/06/23			
DRAWN: DS			
DATE: 05/25/16			
CHKD: KAM			
APPROVED: FV			
DATE: 09/06/23			
DRAWN: DS			
DATE: 05/25/16			
CHKD: KAM			
APPROVED: FV			
DATE: 09/06/23			
DRAWN: DS			
DATE: 05/25/16			
CHKD: KAM			
APPROVED: FV			
DATE: 09/06/23			
DRAWN: DS			
DATE: 05/25/16			
CHKD: KAM			
APPROVED: FV			
DATE: 09/06/23			
DRAWN: DS			
DATE: 05/25/16			
CHKD: KAM			
APPROVED: FV			
DATE: 09/06/23			
DRAWN: DS			
DATE: 05/25/16			
CHKD: KAM			
APPROVED: FV			
DATE: 09/06/23			
DRAWN: DS			
DATE: 05/25/16			
CHKD: KAM			
APPROVED: FV			
DATE: 09/06/23			
DRAWN: DS			
DATE: 05/25/16			
CHKD: KAM			
APPROVED: FV			
DATE: 09/06/23			
DRAWN: DS			
DATE: 05/25/16			
CHKD: KAM			
APPROVED: FV			
DATE: 09/06/23			
DRAWN: DS			
DATE: 05/25/16			
CHKD: KAM			
APPROVED: FV			
DATE: 09/06/23			
DRAWN: DS			
DATE: 05/25/16			
CHKD: KAM			
APPROVED: FV			
DATE: 09/06/23			
DRAWN: DS			
DATE: 05/25/16			
CHKD: KAM			
APPROVED: FV			
DATE: 09/06/23			
DRAWN: DS			
DATE: 05/25/16			
CHKD: KAM			
APPROVED: FV			
DATE: 09/06/23			
DRAWN: DS			
DATE: 05/25/16			
CHKD: KAM			
APPROVED: FV			
DATE: 09/06/23			
DRAWN: DS			
DATE: 05/25/16			
CHKD: KAM			
APPROVED: FV			
DATE: 09/06/23			
DRAWN: DS			
DATE: 05/25/16			
CHKD: KAM			
APPROVED: FV			
DATE: 09/06/23			
DRAWN: DS			
DATE: 05/25/16			
CHKD: KAM			
APPROVED: FV			
DATE: 09/06/23			
DRAWN: DS			
DATE: 05/25/16			
CHKD: KAM			
APPROVED: FV			
DATE: 09/06/23			
DRAWN: DS			
DATE: 05/25/16			
CHKD: KAM			
APPROVED: FV			
DATE: 09/06/23			
DRAWN: DS			
DATE: 05/25/16			
CHKD: KAM			
APPROVED: FV			
DATE: 09/06/23			
DRAWN: DS			
DATE: 05/25/16			
CHKD: KAM			
APPROVED: FV			
DATE: 09/06/23			
DRAWN: DS			
DATE: 05/25/16			
CHKD: KAM			
APPROVED: FV			
DATE: 09/06/23			
DRAWN: DS			
DATE: 05/25/16			
CHKD: KAM			
APPROVED: FV			
DATE: 09/06/23			
DRAWN: DS			
DATE: 05/25/16			
CHKD: KAM			
APPROVED: FV			
DATE: 09/06/23			
DRAWN: DS			
DATE: 05/25/16			
CHKD: KAM			
APPROVED: FV			
DATE: 09/06/23			
DRAWN: DS			
DATE: 05/25/16			
CHKD: KAM			
APPROVED: FV			
DATE: 09/06/23			
DRAWN: DS			
DATE: 05/25/16			
CHKD: KAM			
APPROVED: FV			
DATE: 09/06/23			
DRAWN: DS			
DATE: 05/25/16			
CHKD: KAM			
APPROVED: FV			
DATE: 09/06/23			
DRAWN: DS			
DATE: 05/25/16			
CHKD: KAM			
APPROVED: FV			
DATE: 09/06/23			
DRAWN: DS			
DATE: 05/25/16			
CHKD: KAM			
APPROVED: FV			
DATE: 09/06/23			
DRAWN: DS			
DATE: 05/25/16			
CHKD: KAM			
APPROVED: FV			
DATE: 09/06/23			
DRAWN: DS			
DATE: 05/25/16			
CHKD: KAM			
APPROVED: FV			
DATE: 09/06/23			
DRAWN: DS			
DATE: 05/25/16			
CHKD: KAM			
APPROVED: FV			
DATE: 09/06/23			
DRAWN: DS			
DATE: 05/25/16			
CHKD: KAM			
APPROVED: FV			
DATE: 09/06/23			
DRAWN: DS			
DATE: 05/25/16			
CHKD: KAM			
APPROVED: FV			
DATE: 09/06/23			
DRAWN: DS			
DATE: 05/25/16			
CHKD: KAM			
APPROVED: FV			
DATE: 09/06/23			
DRAWN: DS			
DATE: 05/25/16			
CHKD: KAM			
APPROVED: FV			
DATE: 09/06/23			
DRAWN: DS			
DATE: 05/25/16			
CHKD: KAM			
APPROVED: FV			
DATE: 09/06/23			
DRAWN: DS			
DATE: 05/25/16			
CHKD: KAM			
APPROVED: FV			
DATE: 09/06/23			
DRAWN: DS			
DATE: 05/25/16			
CHKD: KAM			
APPROVED: FV			
DATE: 09/06/23			
DRAWN: DS			
DATE: 05/25/16			
CHKD: KAM			
APPROVED: FV			
DATE: 09/06/23			
DRAWN: DS			
DATE: 05/25/16			
CHKD: KAM			
APPROVED: FV			
DATE: 09/06/23			
DRAWN: DS			
DATE: 05/25/16			
CHKD: KAM			
APPROVED: FV			
DATE: 09/06/23			
DRAWN: DS			
DATE: 05/25/16			
CHKD: KAM			
APPROVED: FV			
DATE: 09/06/23			
DRAWN: DS			
DATE: 05/25/16			
CHKD: KAM			
APPROVED: FV			
DATE: 09/06/23			
DRAWN: DS			
DATE: 05/25/16			
CHKD: KAM			
APPROVED: FV			
DATE: 09/06/23			
DRAWN: DS			
DATE: 05/25/16			
CHKD: KAM			
APPROVED: FV			
DATE: 09/06/23			
DRAWN: DS			
DATE: 05/25/16			
CHKD: KAM			
APPROVED: FV			
DATE: 09/06/23			
DRAWN: DS			
DATE: 05/25/16			
CHKD: KAM			
APPROVED: FV			
DATE: 09/06/23			
DRAWN: DS			
DATE: 05/25/16			
CHKD: KAM			
APPROVED: FV			
DATE: 09/06/23			
DRAWN: DS			
DATE: 05/25/16			
CHKD: KAM			
APPROVED: FV			
DATE: 09/06/23			
DRAWN: DS			
DATE: 05/25/16			
CHKD: KAM			
APPROVED: FV			
DATE: 09/06/23			
DRAWN: DS			
DATE: 05/25/16			
CHKD: KAM			
APPROVED: FV			
DATE: 09/06/23			
DRAWN: DS			
DATE: 05/25/16			
CHKD: KAM			
APPROVED: FV			
DATE: 09/06/23			
DRAWN: DS			
DATE: 05/25/16			
CHKD: KAM			
APPROVED: FV			
DATE: 09/06/23			
DRAWN: DS			
DATE: 05/25/16			
CHKD: KAM			
APPROVED: FV			
DATE: 09/06/23			
DRAWN: DS			
DATE: 05/25/16			
CHKD: KAM			
APPROVED: FV			
DATE: 09/06/23			
DRAWN: DS			
DATE: 05/25/16			
CHKD: KAM			
APPROVED: FV			
DATE: 09/06/23			
DRAWN: DS			
DATE: 05/25/16			
CHKD: KAM			
APPROVED: FV			
DATE: 09/06/23			
DRAWN: DS			
DATE: 05/25/16			
CHKD: KAM			
APPROVED: FV			
DATE: 09/06/23			
DRAWN: DS			
DATE: 05/25/16			
CHKD: KAM			
APPROVED: FV			
DATE: 09/06/23			
DRAWN: DS			
DATE: 05/25/16			
CHKD: KAM			
APPROVED: FV			
DATE:			

NOTES:  
SEE SHEET 1

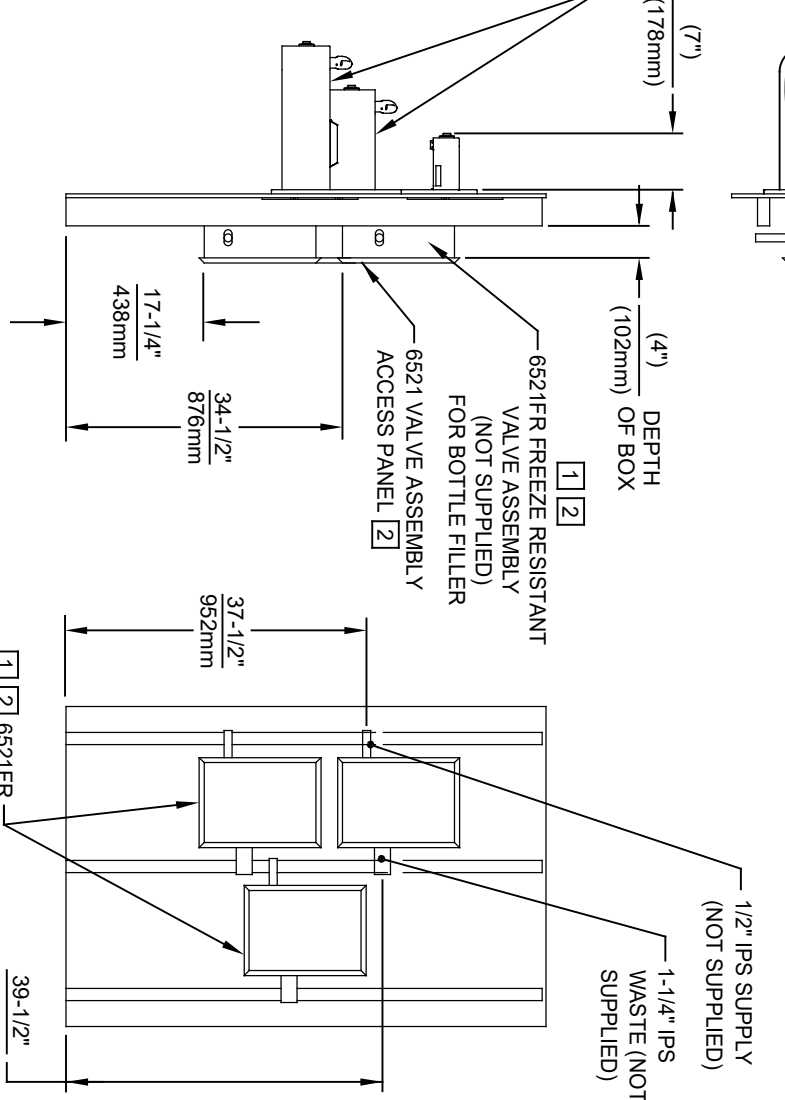
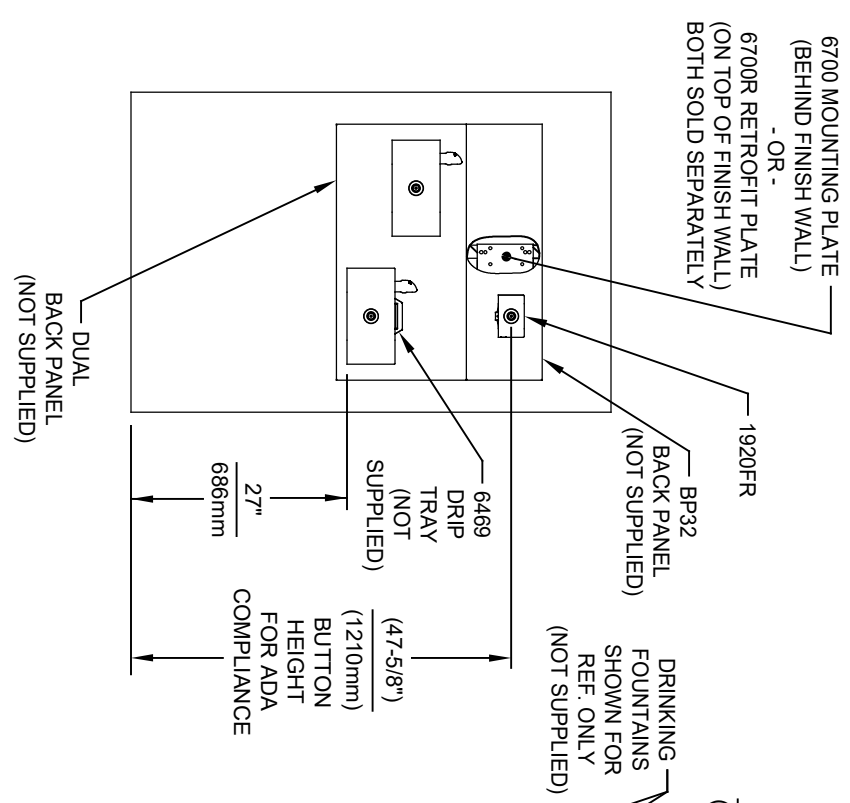
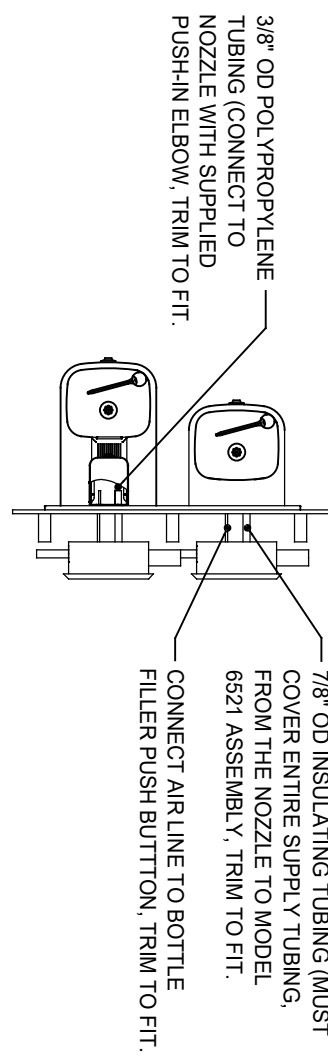


**INSTALLATION SHOWN ABOVE HAWS MODEL 1109FR**

1. SEE SEPARATE INSTALLATION DRAWINGS FOR MOUNTING PLATES AND BACK PANELS (SHOWN FOR REFERENCE - NOT SUPPLIED).
2. WHEN INSTALLING THIS UNIT, LOCAL, STATE OR FEDERAL CODES SHOULD BE ADHERED TO FOR INSTALLATION LOCATIONS, WASTE & SUPPLY REQUIREMENTS OTHER THAN SHOWN.

		1455 KLEPPLE PLANE SPARKS, NEVADA 89431 (775) 359-4712 FAX (775) 359-7424 E-MAIL: HAWS@HAWSCO.COM WEBSITE: WWW.HAWSCO.COM	
EGN NO. REVISED PERMITS BY:	MODEL(S)	1920FR	
9081 ECN: 5893			
DATE: 02/19/17	DATE: 02/19/17		
CHKD: KM	CHKD: KM		
APPROVED: FV	SCALE: N/A	DRAWING TYPE:	INSTALLATION
DATE: 09/26/23		SIZE: A1	SHEET: 2 OF 3
			REVISION: 7
			PART NUMBER: 0510000491.D

NOTES:  
SEE SHEET 1



**INSTALLATION SHOWN ABOVE HAWS MODEL 1119FR**

1. SEE SEPARATE INSTALLATION DRAWINGS FOR MOUNTING PLATES AND BACK PANELS (SHOWN FOR REFERENCE - NOT SUPPLIED).
2. WHEN INSTALLING THIS UNIT, LOCAL, STATE OR FEDERAL CODES SHOULD BE ADHERED TO FOR INSTALLATION LOCATIONS, WASTE & SUPPLY REQUIREMENTS OTHER THAN SHOWN.

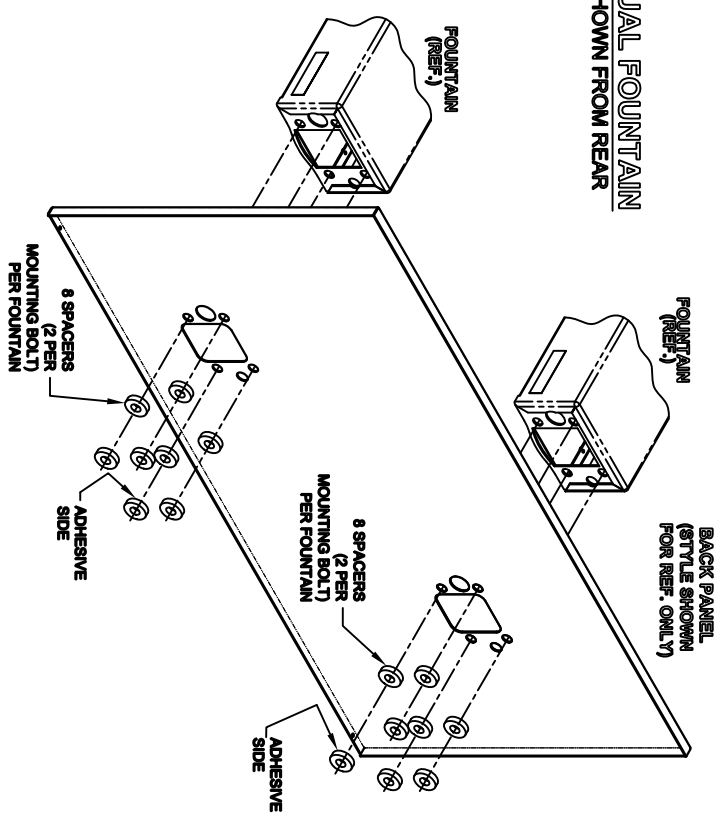
1455 KLEPPER LANE  
SPARKS, NEVADA 89431  
(775) 399-4712 FAX (775) 399-7424  
E-MAIL: HAWS@HAWS.CO.COM  
WEBSITE: WWW.HAWS.CO.COM

ECN NO.	REVISED PER BY:	MODEL(S)	SCALE:	DATE:	DRAWING TYPE:	INSTALLATION:	SIZE:
0181	EV	1920FR	N/A	02/19/12	INSTALLATION		A 1 SHEET 3 OF 3
DRAWN BY:	DATE:	CHKD. BY:	DATE:	APPROVED BY:	SCALE:	DATE:	REVISION:
JUL	02/19/12	KML		EV		09/26/23	7
PART NUMBER							
0510000491.D							



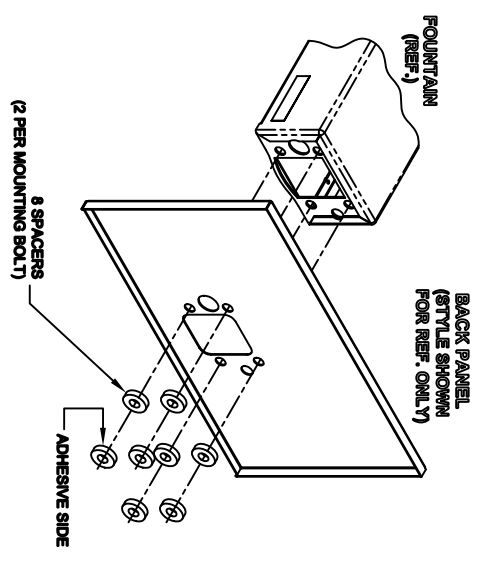
THIS DOCUMENT IS TRUE AND CORRECT AT TIME OF PUBLICATION. CONTAINED PRODUCT IMPROVEMENTS HAVE SPECIFICATIONS AND MEASUREMENTS SUBJECT TO CHANGE WITHOUT NOTICE.

**DUAL FOUNTAIN**  
SHOWN FROM REAR

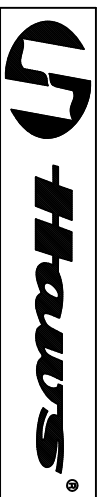
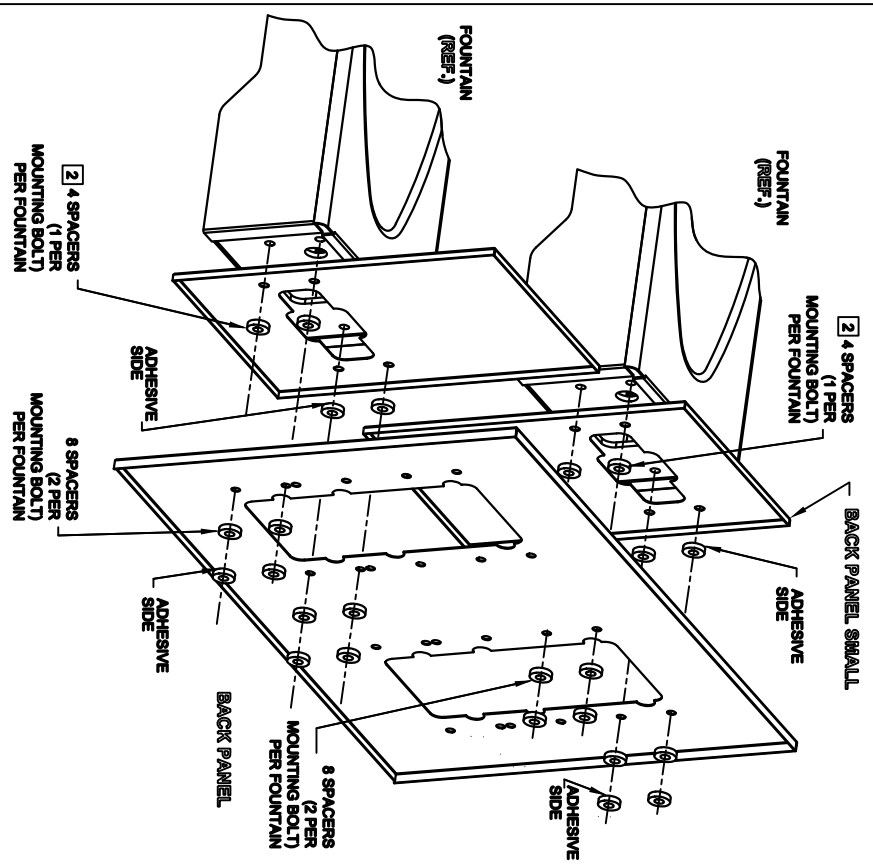


- NOTES:**
- 1 ON ALL BACK PANEL MODELS, SPACERS ARE NOT USED WHEN A MOUNTING FRAME IS USED EXCEPT AS SPECIFIED IN NOTE 2
  - 2 INDICATED SPACERS ARE USED WITH MOUNTING FRAME (DUAL ADJUSTABLE)

**SINGLE FOUNTAIN**  
SHOWN FROM REAR

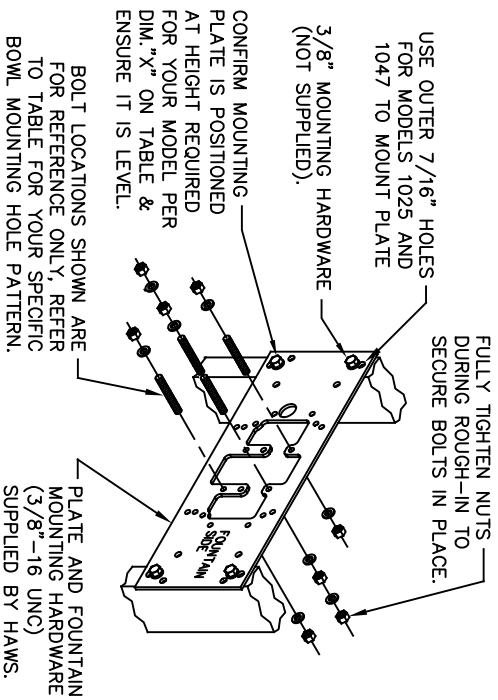
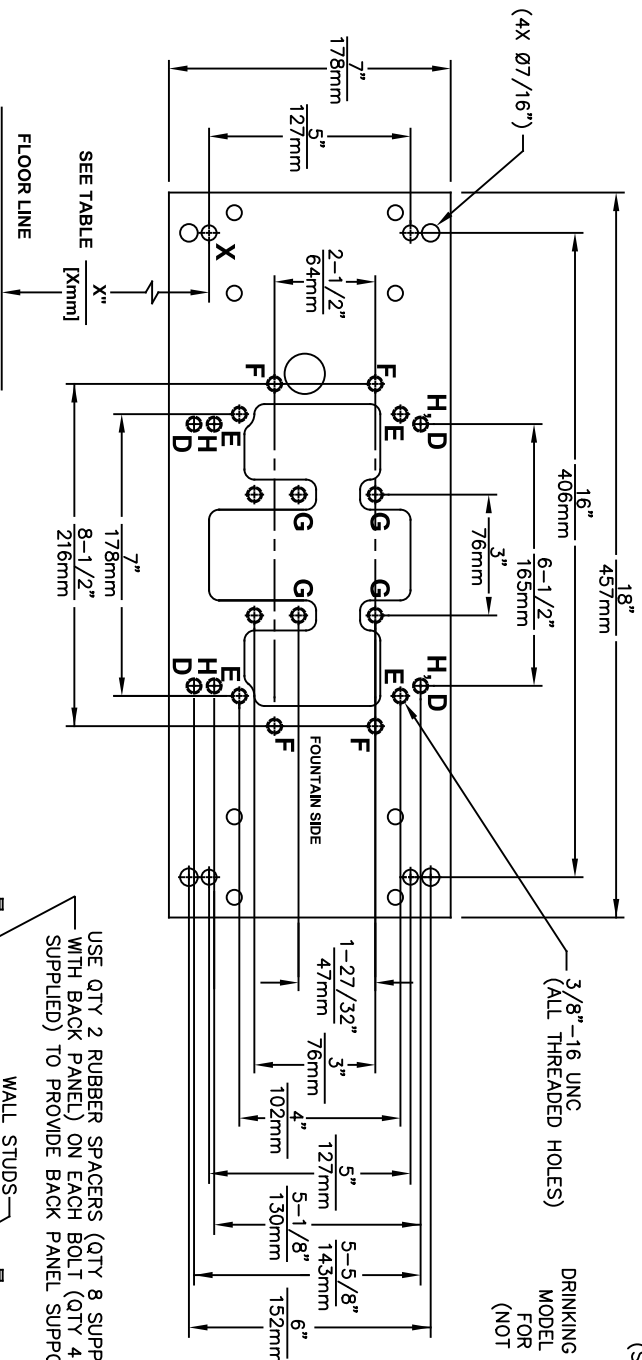


**DUAL FOUNTAIN ADJUSTABLE**  
SHOWN FROM REAR



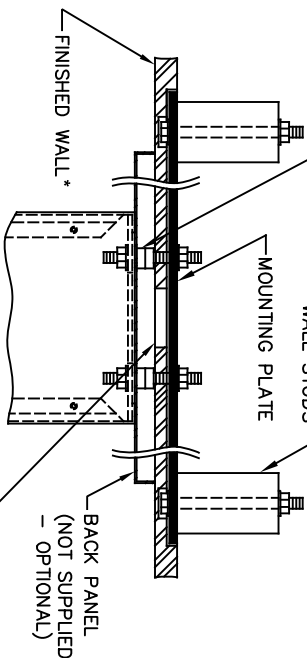
1465 KLEPPE LANE  
SPARKS, NEVADA, 89431  
(775) 399-4712 FAX (759) 399-1424  
E-MAIL: HAWS@HAWS.CO.COM  
WEBSITE: WWW.HAWS.CO.COM

ECN NO. REVISED PER BY:	MODEL(S)	BACK PANEL
DRAWN: [ ]	DATE: [ ]	SPACER INSTRUCTIONS
CHKD: [ ]	DATE: [ ]	INSTALLATION
APPROVED: [ ]	DATE: [ ]	SIZE: A
		SHEET: 1 OF 1
		DRAWING NO. 08292C00
		REV. 5
		PART NUMBER 0002082219



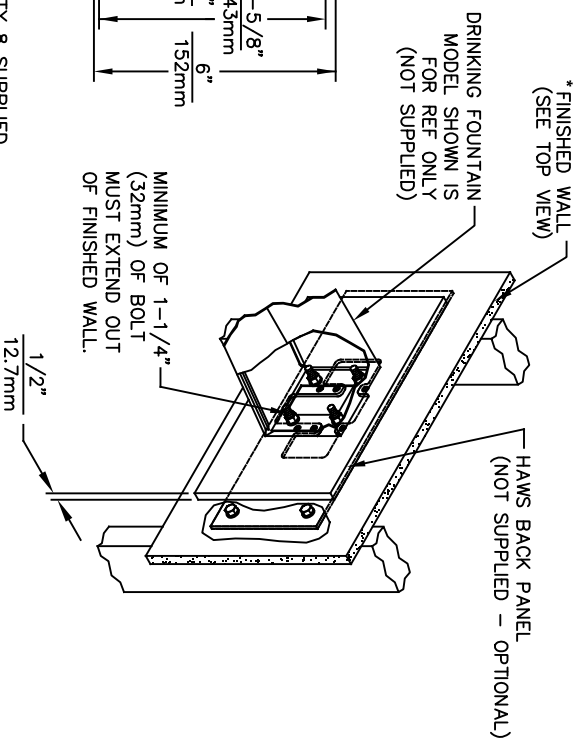
**CAUTION**

REGARDING CONCRETE/MASONRY WALL MOUNTING: DO NOT SECURE MOUNTING PLATE TO SAME SIDE OF WALL AS FOUNTAIN. AVOID COMPROMISING INTEGRITY OF WALL WHEN ANCHORING FOUNTAIN. IT IS RECOMMENDED THAT INSTALLER CALL TECHNICAL SUPPORT IF THERE ARE ANY QUESTIONS AS TO HOW TO OBTAIN A PROPER ANCHOR IN CONCRETE/MASONRY WALLS. 1-800-766-5612



**TOP VIEW**

**6700 MOUNTING PLATE FOR USE WITH DRINKING FOUNTAINS AND WASTE DRIP TRAYS AT 27" ADULT HEIGHT (SEE SHEETS 2 - 5 FOR USE WITH BOTTLE FILLER 1920/1920HO SERIES AND CHILD HEIGHT APPLICATIONS)**

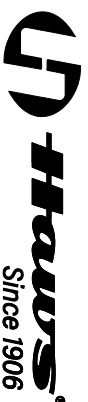


MODEL	USE BOWL MTG. HOLE PATTERN	USE "X" DIM. BELOW TO POSITION MOUNTING PLATE HOLE "X"
1001	"G"	25-3/8" [645mm]
1025	"D"	28-1/8" [714mm]
1047	"E"	24-3/8" [619mm]
1105	"H"	34-5/16" [872mm]
1107L	"F"	26-3/16" [665mm]
1109	"H"	27-5/16" [694mm]
1109.14	"H"	27-5/16" [694mm]
1109FR	"H"	27-5/16" [694mm]
1311	"E"	26-3/4" [679mm]

WASTE DRIP TRAY (ONLY) AT 27" ADULT HEIGHT	PART NUMBER
"G"	6468
"G"	1922

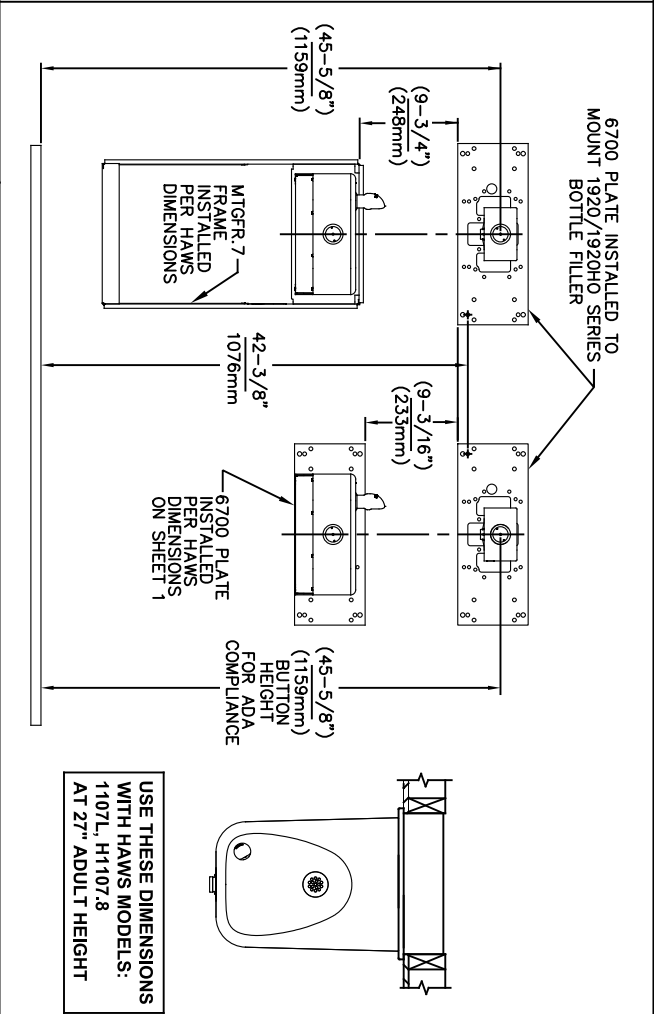
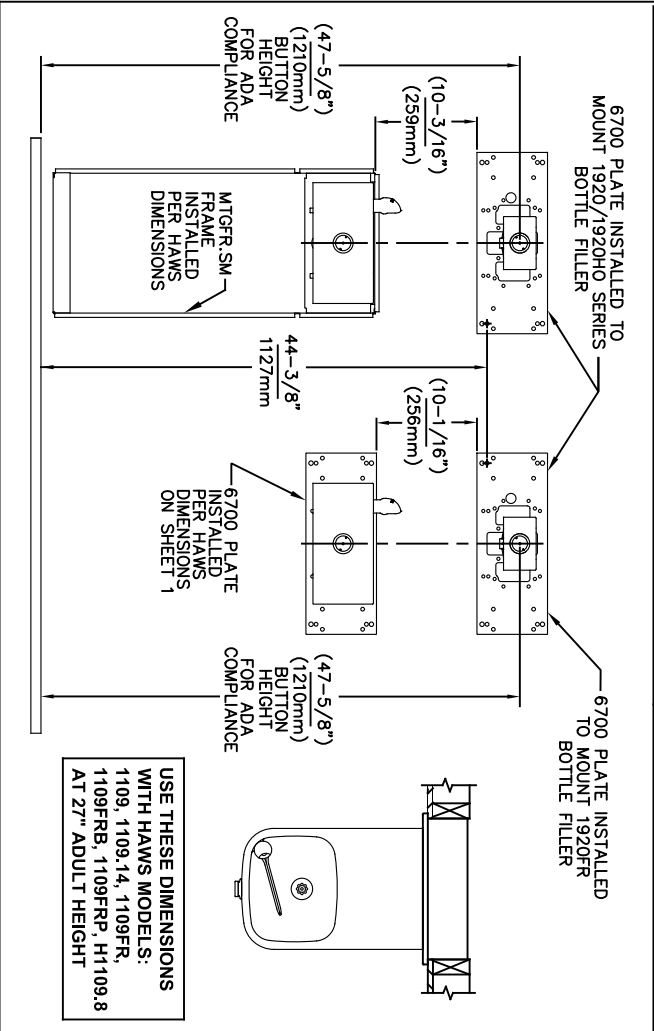
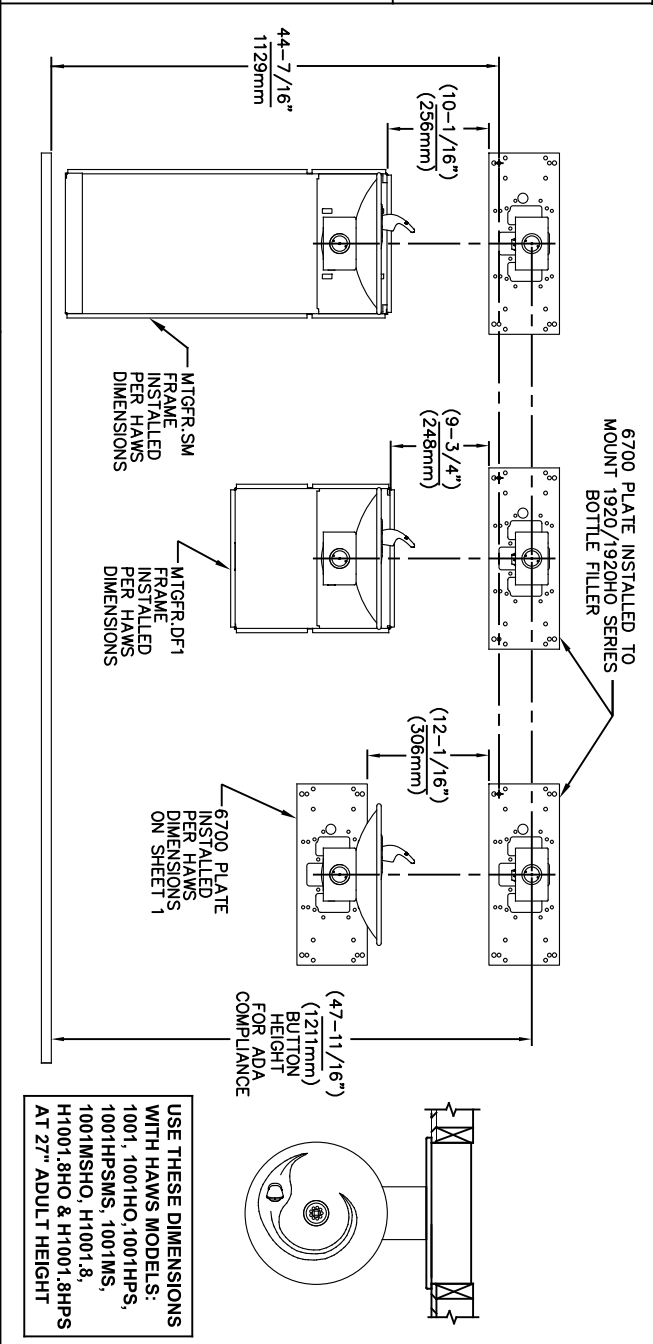
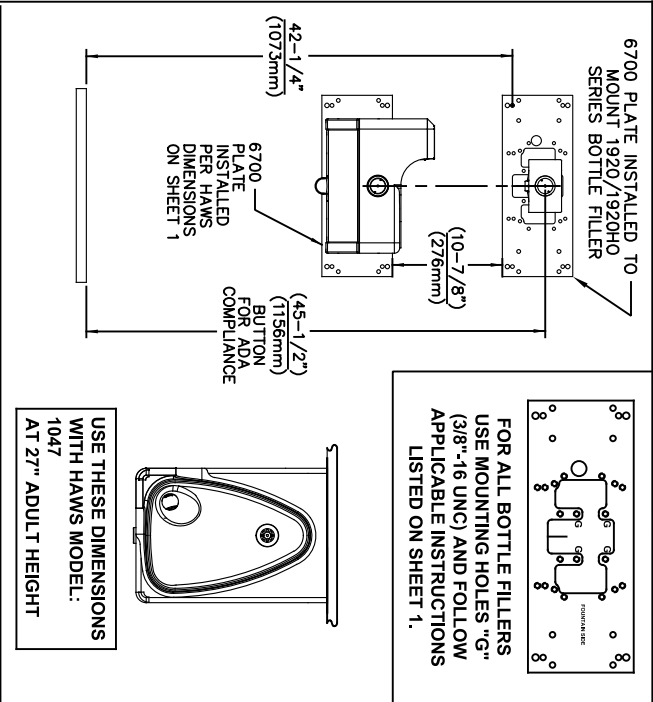
\*FINISH WALL OVER MOUNTING PLATE AND BEHIND BACK PANEL. MAKE SURE THAT FINISHED WALL EXTENDS WITHIN THE BRACKET/BOWL MOUNTING HOLES (TO PROVIDE SURFACE AREA FOR RUBBER SPACERS TO CONTACT).



ECN NO.:	REVISION PERIOD:	MODEL(S)	SCALE:	DRAWING TYPE:	INSTALLATION:
6700	02/26/24	6700	N/A		
DRAWN:	DATE:	CHK'D:	SCALE:	DRAWING TYPE:	INSTALLATION:
C.L.	09/20/23	K.M.			
APPROVED:	DATE:	SCALE:	DRAWING TYPE:	INSTALLATION:	SHEET 1 OF 5
F.V.	02/26/24				24

1455 KLEPPE LANE  
SPARKS, NEVADA 89431  
(775) 369-4712 FAX (775) 359-7424  
E-MAIL: HAWES@HAWESCO.COM  
WEBSITE: WWW.HAWESCO.COM





NOTES:  
 1. WHEN INSTALLING THIS UNIT, LOCAL, STATE OR FEDERAL CODES SHOULD BE ADHERED TO.  
 2. BACK PANELS (OPTIONAL) NOT SHOWN FOR CLARITY.

6700 MOUNTING PLATE  
 FOR USE WITH BOTTLE FILLER  
 (SEE SHEET 1 FOR USE WITH  
 DRINKING FOUNTAINS)

**Haws**  
 Since 1906

1455 KLEPPE LANE  
 SPARKS, NEVADA 89431  
 (775) 359-4712 FAX (775) 359-7424  
 E-MAIL: HAWS@HAWS.CO.COM  
 WEBSITE: WWW.HAWS.CO.COM

ECN NO. REVISED PER BY:	MODEL(S)
ECN 6005	67/00
DATE: 02/09/17	CHK'D:
DATE: 02/09/17	DATE:
APPROVED: FV	SCALE: N/A
DATE: 02/26/24	DRAWING TYPE: INSTALLATION
SIZE: A	SHEET: 2 OF 5
REVISION: 24	PART NUMBER: 0002080016