

FEATURES & BENEFITS

CONSTRUCTION

Rugged ADA accessible 18 gauge Type 304 stainless steel bowls and 14 gauge Type 304 Stainless Steel bottle filler. Unit features stainless steel satin finish back panels, vandal-resistant bottom plate, and 1-1/4" integrated trap.

BOTTLE FILLER

Vandal-resistant, 14-gauge Type 304 stainless steel bottle filler housing with push button operation and 1 gpm (3.78 L) laminar flow.

BUBBLER HEADS

Polished chrome-plated brass bubbler heads with integral 11/16" dia. basin shank and stainless anti-rotation roll pin for vandal resistance strength. Shielded, angled stream opening provides a steady, sanitary source of drinking water at .45 gpm.

FOUNTAIN VALVES

The push-button activated valves have all stainless steel bodies, with chrome plated brass push button assemblies which allow for front access to water stream adjustment, water control cartridge, and water supply strainer replacement without having to go through the bottom plate. Operating pressure range of 30 to 90 psi (2.1 to 6.2 bar).

VANDAL RESISTANT

The bubbler heads, push buttons, drain strainers and bottom plates are locked in place, discouraging unwanted vandal tampering, and 30-second obstruction time-out to reduce tampering of sensor.

INTEGRATED TRAP

All-cast adjustable brass 1-1/4" NPT trap is internally mounted completely concealed within the fountain's bottom plate for easy installation and access.



SPECIFICATIONS

Model 1119P Hi-Lo wall mounted vandal-resistant ADA drinking fountain and bottle filler shall include dual 18 gauge Type 304 Stainless Steel satin finish basins, 14 gauge bottle filler bracket, vandal-resistant push-button operated stainless steel valves with front accessible cartridge and flow adjustment, 100% lead-free waterways, polished chrome-plated brass vandal-resistant bubbler heads with integral laminar anti-squirt flow, 1 gpm (3.78 L) laminar flow bottle filler with in-wall 3/16" thick steel mounting plate, polished chrome-plated brass vandal-resistant waste strainers, vandal-resistant bottom plates, stainless steel satin finish back panels, high and low fountain mounting levels, and 1-1/4" NPT traps.

APPLICATIONS

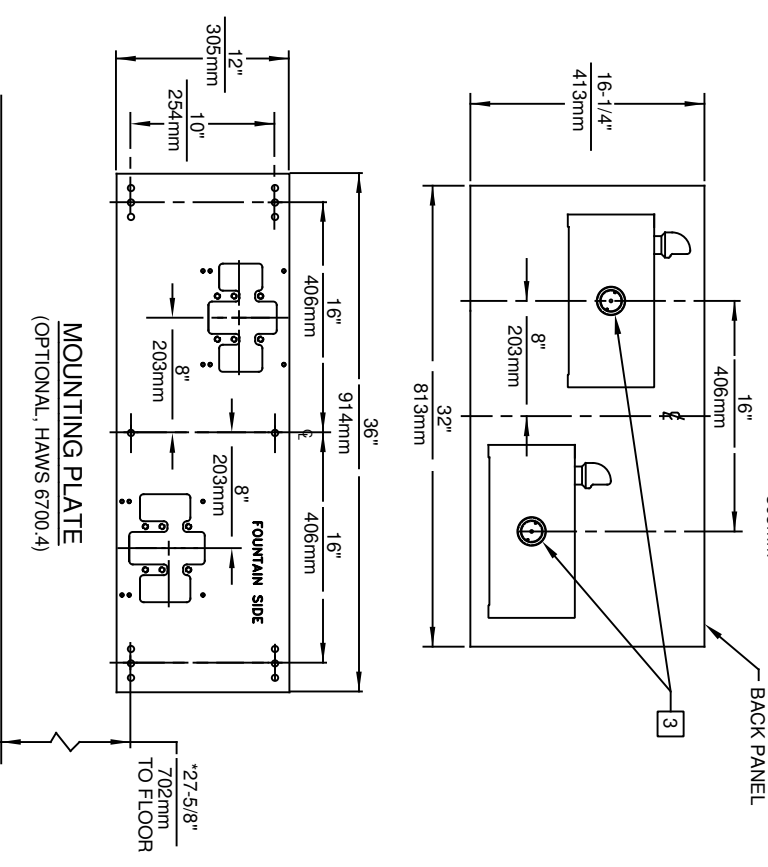
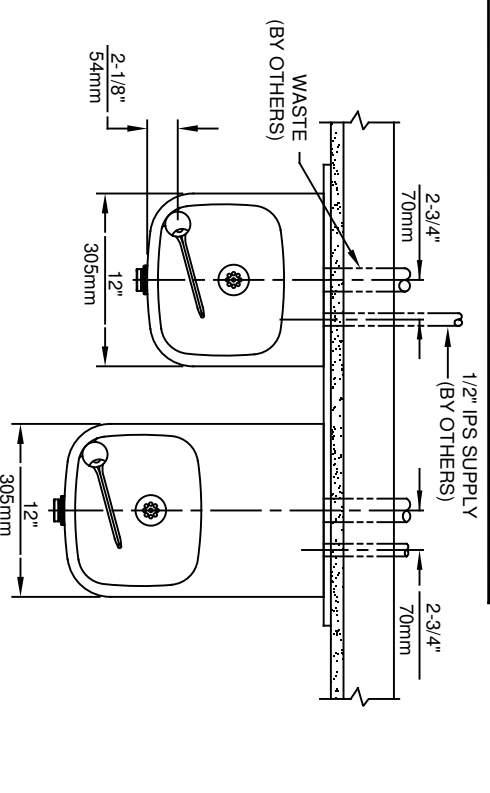
Perfect for either public or private indoor/outdoor settings, Model 1119P is a great fit in areas where aesthetics are important to the overall appeal of the architecture. This series is precisely mounted, making it a nice addition to any surrounding. Beautiful satin finish helps to maintain the fountains overall appeal so it always remains looking as new as it did when it was installed. Specifically, this type of wall mounted drinking fountain may be placed in settings such as: schools and other locations in and around office buildings where the temperature remains above freezing. Model meets all current Federal Regulations for the disabled including those in the Americans with Disabilities Act. Haws manufactures drinking fountains, faucets and electric water coolers to be lead-free by all known definitions including NSF/ANSI/CAN 61- Section 9, NSF/ANSI/CAN 372, California Proposition 65, and the Federal Safe Drinking Water Act. Product is compliant to California Health and Safety Code 116875 (AB 1953-2006), and 116876 (AB 100) "NSF/ANSI/CAN 61: Q ≤ 1".

OPTIONS

- Water Filter: Model 6480 filter kit with 3000 gallon carbon block filter, filter head, and mounting bracket.
- Mounting Plate: Model 6700.4, in-wall mounting plate which is 36" wide by 3/16" thick solid steel that spans three studs for a heavy-duty vandal-resistant rigid installation.
- Support Frame: Model 6800 In-wall floor mounted fixture support legs, welded steel 4-bolt floor flanges, and supplied with 'U' bolts and hardware.

For more information, visit www.hawsc.com or call (888) 640-4297.

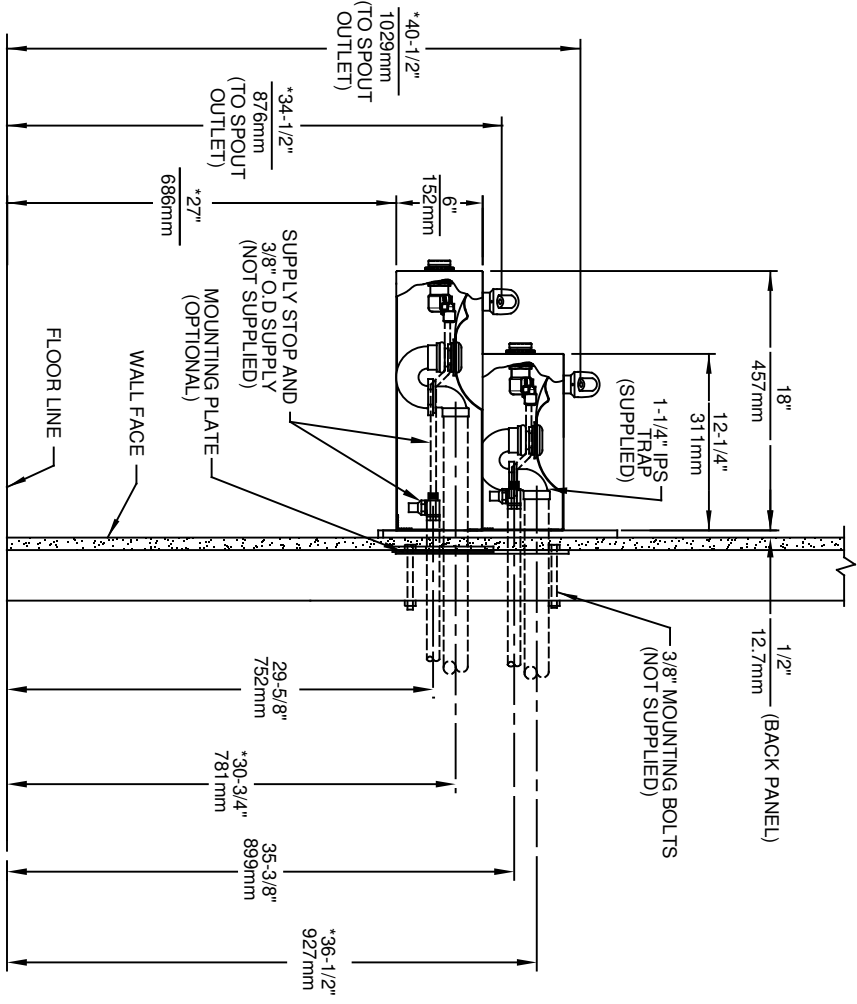
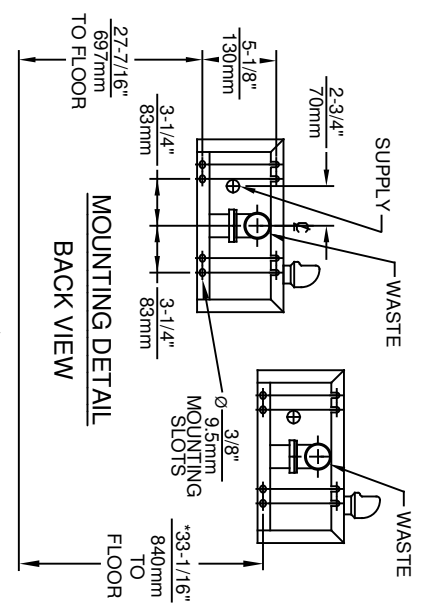




MOUNTING PLATE
(OPTIONAL, HAWS 6700.4)

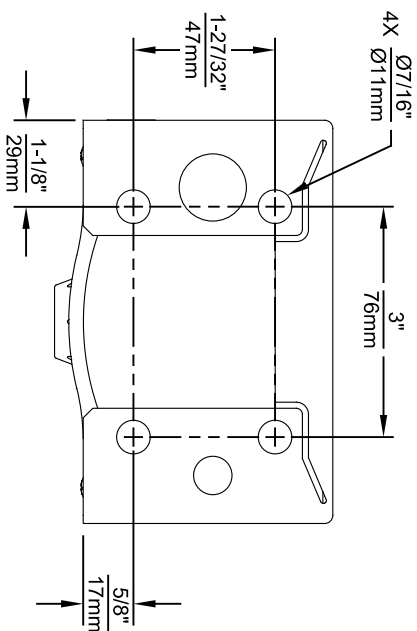
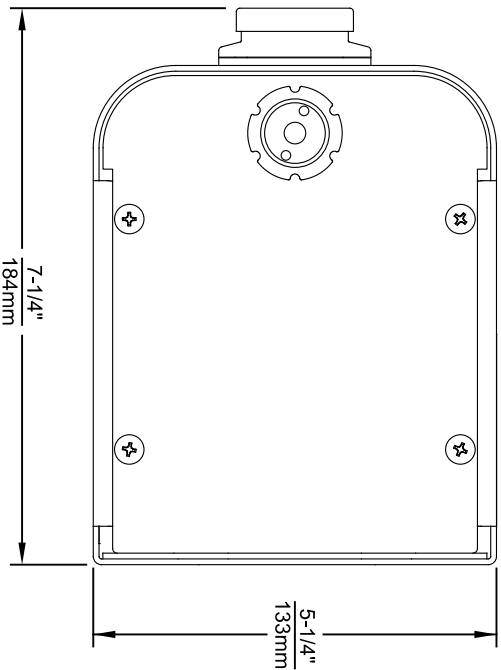
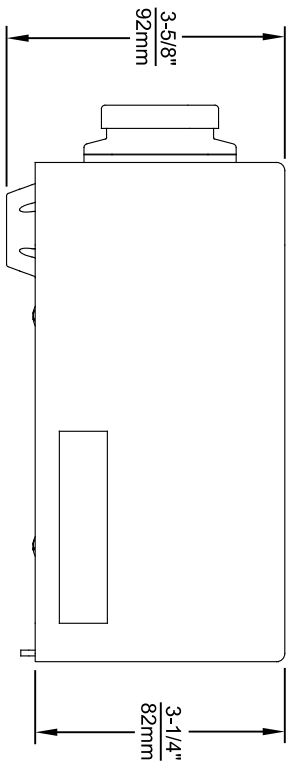
NOTES:

1. HOLD ROUGH-IN DIMENSIONS ± 1/4" (6.4mm).
2. WHEN INSTALLING THIS UNIT, LOCAL, STATE, OR FEDERAL CODES SHOULD BE ADHERED TO, FOR INSTALLATION HEIGHTS OTHER THAN SHOWN, DIMENSIONS MARKED (*) MUST BE ADJUSTED ACCORDINGLY.
3. REFER TO 5874 SERIES/VRK5874 OPERATION AND MAINTENANCE MANUAL FOR PUSH BUTTON AND VALVE INSTALLATION/MAINTENANCE INSTRUCTIONS.

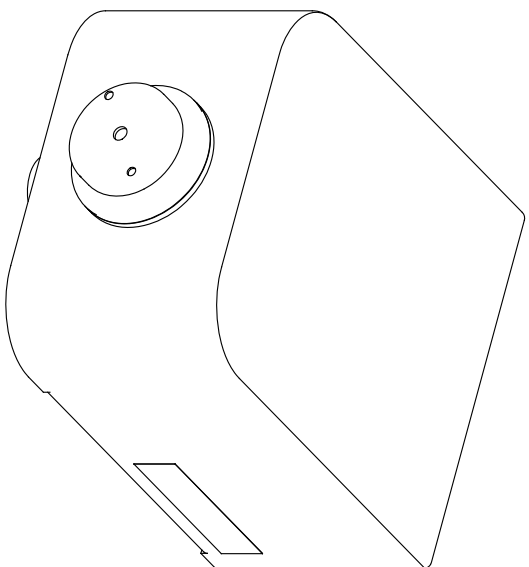


1455 KLEPPE LANE
SPARKS, NEVADA, 89431
(775) 359-4712 FAX (775) 359-7424
E-MAIL: HAWS@HAWS.CO.COM
WEBSITE: WWW.HAWS.CO.COM

ECN NO. REVISED PER/FBY:	MODEL(S)		
DRAWN: ECN: 5330 T	EV	1119	
DATE: 04/15/98	CHKD: DP		
F. VASQUEZ	DP		
APPROVED: DATE: 02/26/20	SCALE: 1:14	DRAWING TYPE:	INSTALLATION
NE		SIZE: A	SHEET: 1 OF 1



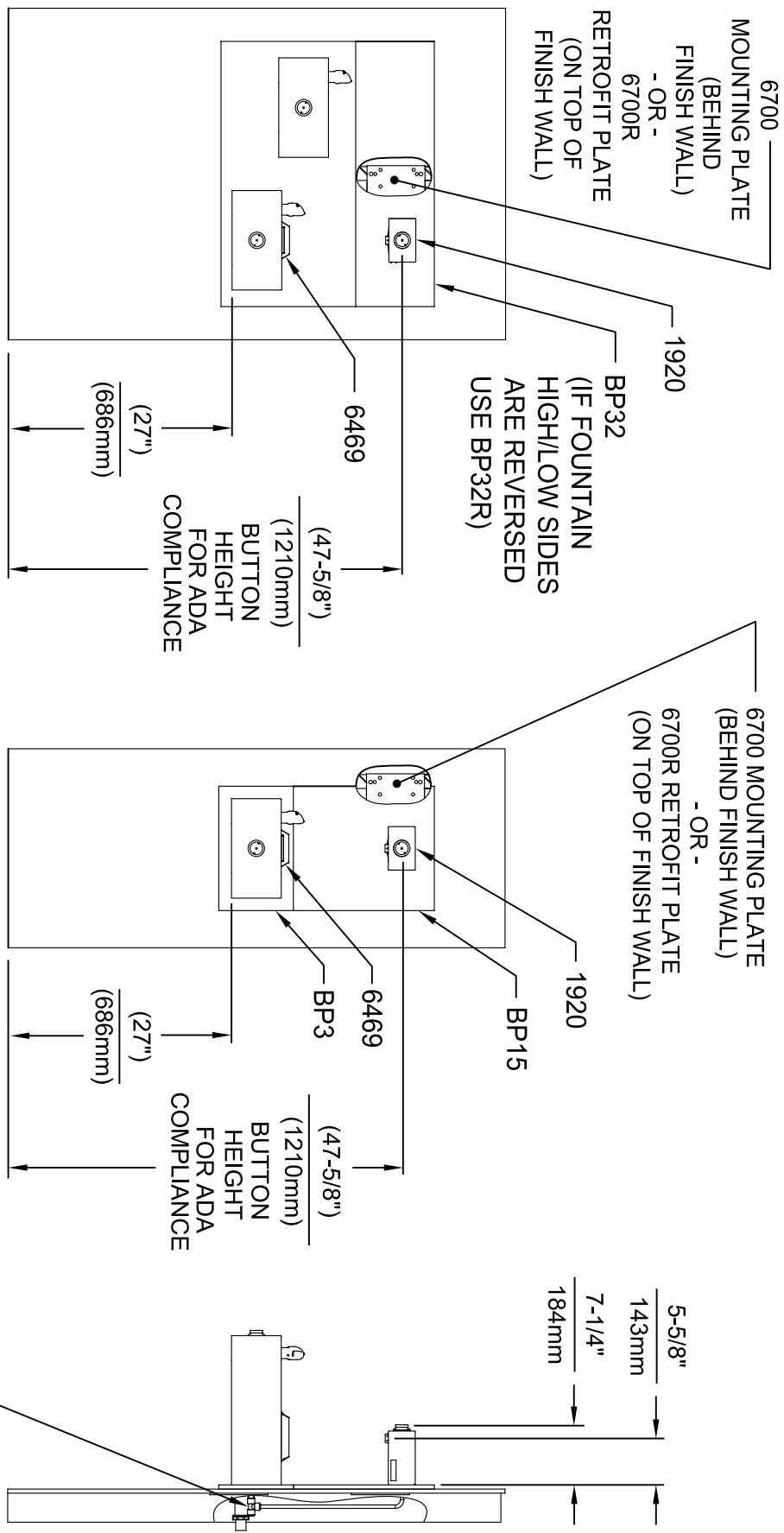
1920 SERIES MOUNTING HOLE LOCATIONS
(3/8\"-16 UNC MOUNTING HARDWARE NOT SUPPLIED)



NOTES:

1. SEE SHEETS 2 THRU 7 FOR BOTTLE FILLER ADULT ADA HEIGHT APPLICATIONS AND SHEET 8 FOR CHILD ADA HEIGHT APPLICATIONS.
2. WHEN INSTALLING THIS UNIT, LOCAL, STATE OR FEDERAL CODES SHOULD BE ADHERED TO FOR INSTALLATION LOCATIONS, WASTE & SUPPLY REQUIREMENTS OTHER THAN SHOWN.

		1455 KLEPPLELANE SPARKS, NEVADA 89431 (775) 359-4712 FAX (775) 359-7424 E-MAIL: HAWS@HAWSCO.COM WEBSITE: WWW.HAWSCO.COM	
EGN NO. REVISED PER BY: 5081 FV	MODEL(S) 1920/1920HPS/1920W	PART NUMBER 0510000490.D	REVISION 12
DRAWN: DS DATE: 05/25/16 CHK'D: JC	DATE: 04/19/24	SCALE: N/A	DRAWING TYPE: INSTALLATION
APPROVED: FV	SIZE: A1	SHEET: 1	OF: 8

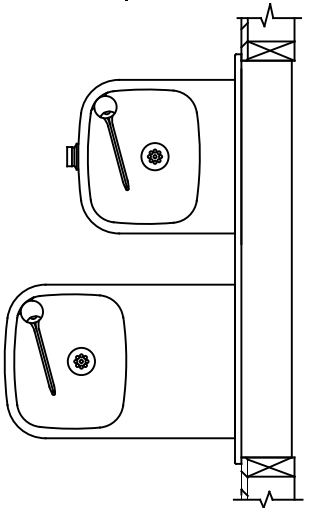


INSTALLATION ABOVE HAWS 1119 & H1119.8 SERIES

**INSTALLATION ABOVE HAWS 1109 & H1109.8 SERIES
SEE SHEET 8 FOR INSTALLATION AT CHILD HEIGHT**

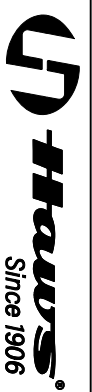
* IF YOUR FOUNTAIN IS THIS STYLE USE THESE DIMENSIONS

1. SEE SEPARATE INSTALLATION DRAWINGS FOR MOUNTING PLATES AND BACK PANELS (SHOWN FOR REFERENCE - NOT SUPPLIED).
2. WHEN INSTALLING THIS UNIT, LOCAL, STATE OR FEDERAL CODES SHOULD BE ADHERED TO FOR INSTALLATION LOCATIONS, WASTE & SUPPLY REQUIREMENTS OTHER THAN SHOWN.

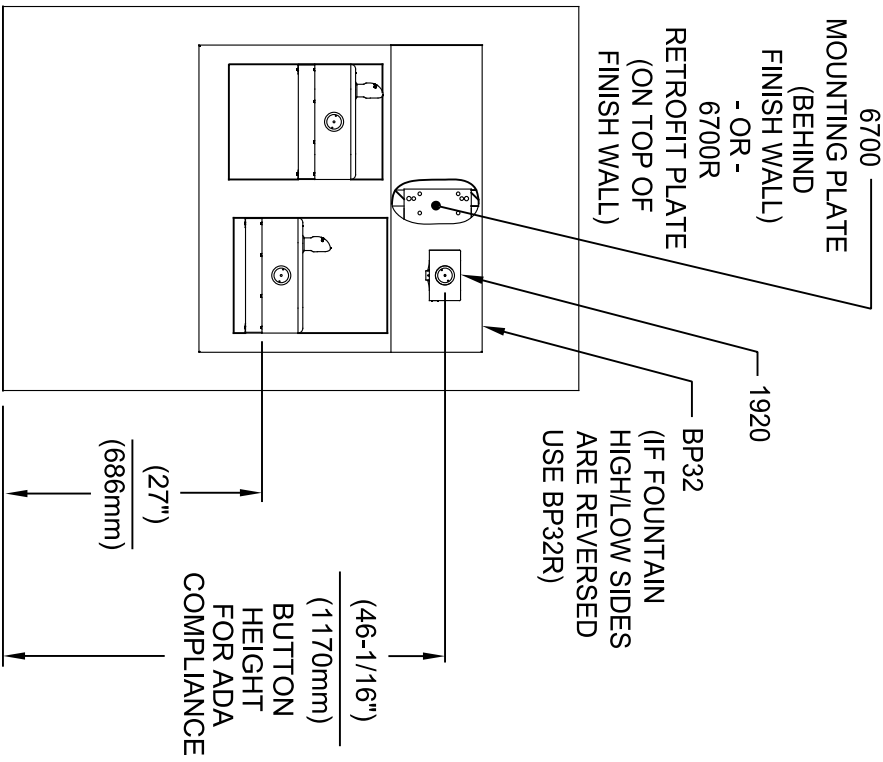


5-5/8"
143mm
7-1/4"
184mm

3/8" O.D. SUPPLY TUBING AND 3/8" O.D. PUSH-IN TEE SUPPLIED. (CONNECT TO FOUNTAIN SUPPLY LINE)



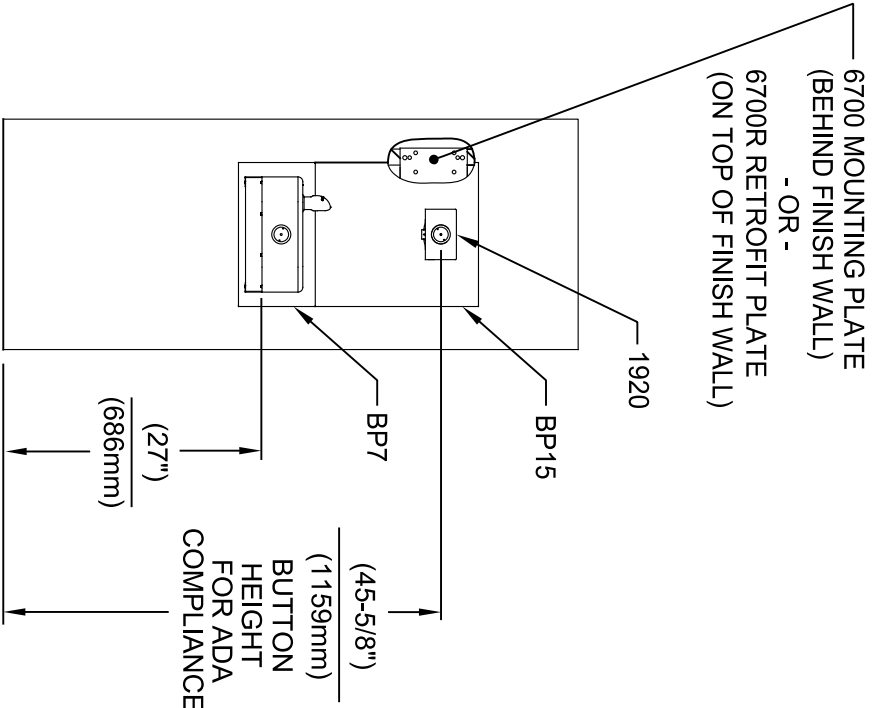
EQUIPMENT NO. REVISED PER BY: FV		MODEL(S)		1455 KLEPPLE LANE	
5081	ECON: 5972	DATE: 01/30/17	CHK'D: JC	1920/1920HPS/1920W	SPARKS, NEVADA 89431
MA		DATE: 04/19/24	SCALE: N/A	DRAWING TYPE:	(775) 359-4712 FAX (775) 359-1424
APPROVED: FV					E-MAIL: HAWS@HAWSCO.COM
					WEBSITE: WWW.HAWSCO.COM
					PART NUMBER 0510000490.D
					REVISION: 12
					SIZE: A1 SHEET: 3 OF 8



INSTALLATION ABOVE HAWS 1117L & H1117.8 SERIES

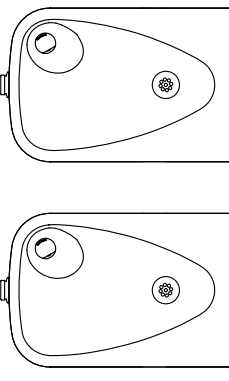
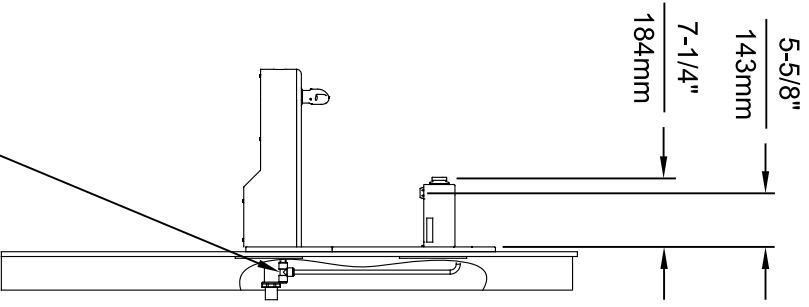
* IF YOUR FOUNTAIN IS THIS STYLE USE THESE DIMENSIONS

1. SEE SEPARATE INSTALLATION DRAWINGS FOR MOUNTING PLATES AND BACK PANELS (SHOWN FOR REFERENCE - NOT SUPPLIED).
2. WHEN INSTALLING THIS UNIT, LOCAL, STATE OR FEDERAL CODES SHOULD BE ADHERED TO FOR INSTALLATION LOCATIONS, WASTE & SUPPLY REQUIREMENTS OTHER THAN SHOWN.



INSTALLATION ABOVE HAWS 1107L & H1107.8 SERIES SEE SHEET 8 FOR INSTALLATION AT CHILD HEIGHT

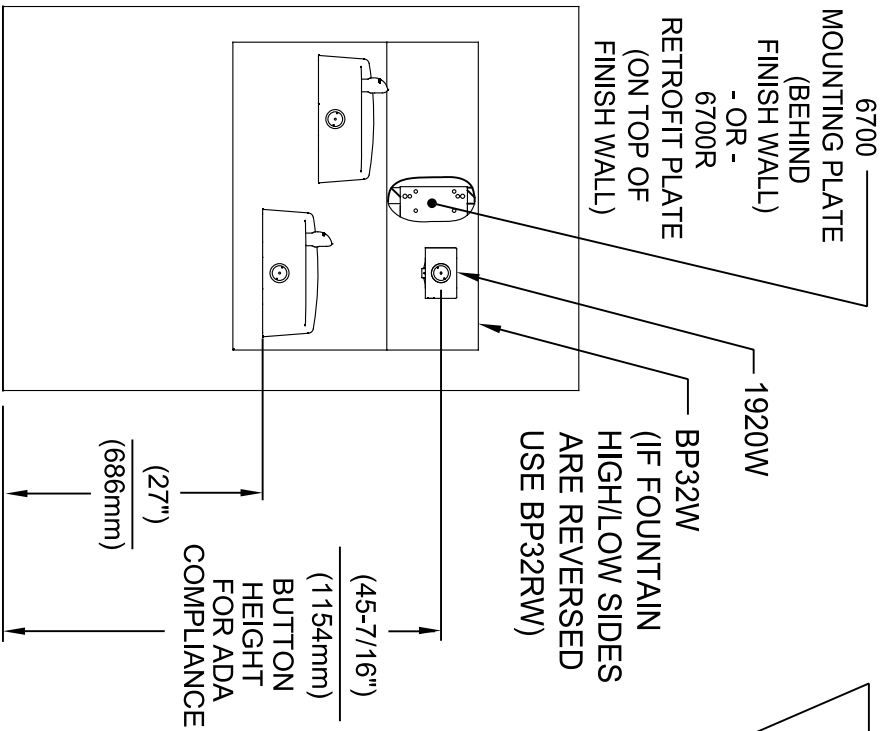
3/8" O.D. SUPPLY TUBING AND 3/8" O.D. PUSH-IN TEE SUPPLIED. (CONNECT TO FOUNTAIN SUPPLY LINE)



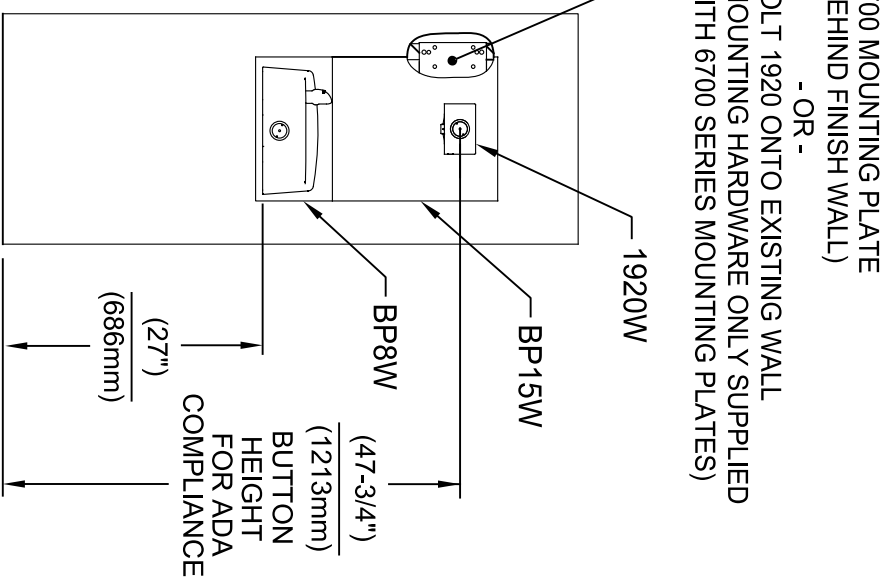
Haws
Since 1906

1455 KLEPPLELANE
SPARKS, NEVADA 89431
(775) 359-4712 FAX (775) 359-424
E-MAIL: HAWS@HAWS.CO.COM
WEBSITE: WWW.HAWS.CO.COM

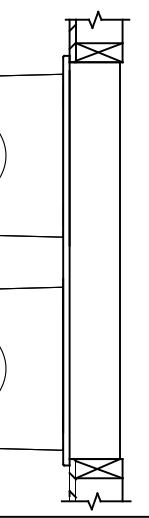
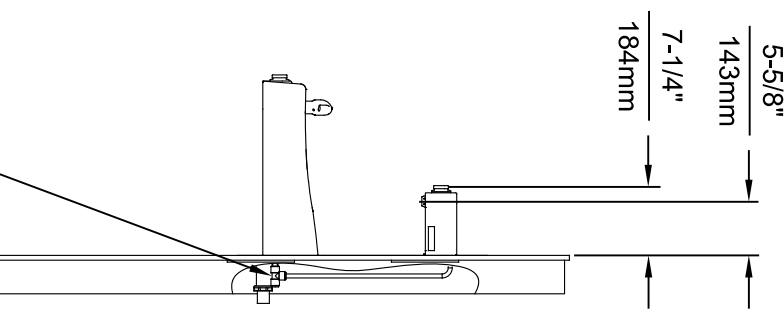
EGN NO. REVISED PER BY:	MODEL(S)	SCALE:	DATE:	INSTALLATION:
5081 FV	1920/1920HPS/1920W	N/A	04/19/24	
DRAWN: 5081	DATE: 01/30/17	DATE: 04/19/24	SCALE: N/A	DRAWING TYPE:
CHKD: JC				
APPROVED: FV				
PART NUMBER:	0510000490.D	SIZE: A1	SHEET: 4	OF: 8
REVISION:	12			



INSTALLATION ABOVE HAWS 1501



**INSTALLATION ABOVE HAWS 1311
SEE SHEET 8 FOR INSTALLATION AT CHILD HEIGHT**



* IF YOUR FOUNTAIN IS THIS STYLE USE THESE DIMENSIONS

1. SEE SEPARATE INSTALLATION DRAWINGS FOR MOUNTING PLATES AND BACK PANELS (SHOWN FOR REFERENCE - NOT SUPPLIED).

2. WHEN INSTALLING THIS UNIT, LOCAL, STATE OR FEDERAL CODES SHOULD BE ADHERED TO FOR INSTALLATION LOCATIONS, WASTE & SUPPLY REQUIREMENTS OTHER THAN SHOWN.

6700 MOUNTING PLATE (BEHIND FINISH WALL)
- OR -
BOLT 1920 ONTO EXISTING WALL (MOUNTING HARDWARE ONLY SUPPLIED WITH 6700 SERIES MOUNTING PLATES)

BP32W (IF FOUNTAIN HIGH/LOW SIDES ARE REVERSED USE BP32RW)

BP15W

BP8W

BUTTON HEIGHT FOR ADA COMPLIANCE

BUTTON HEIGHT FOR ADA COMPLIANCE

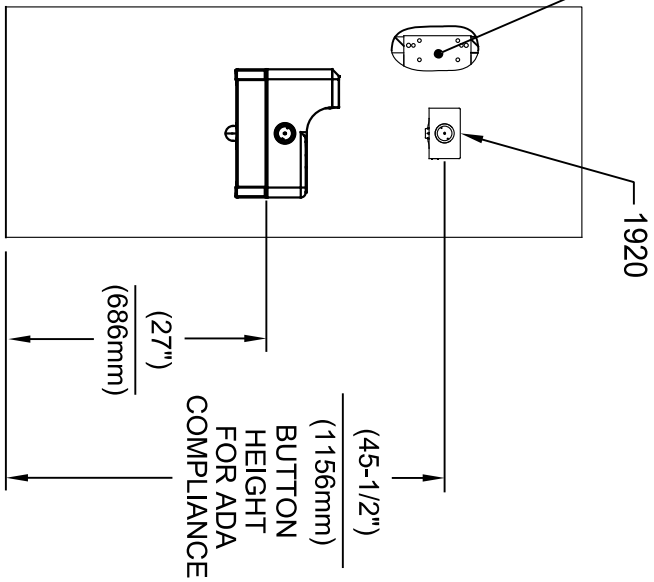
3/8" O.D. SUPPLY TUBING AND 3/8" O.D. PUSH-IN TEE SUPPLIED. (CONNECT TO FOUNTAIN SUPPLY LINE)

Haws
Since 1906

1455 KLEPPLE LANE
SPARKS, NEVADA 89431
(775) 359-4712 FAX (775) 359-7424
E-MAIL: HAWS@HAWS.CO.COM
WEBSITE: WWW.HAWS.CO.COM

EGN NO. REVISED PER BY:	FLV	DATE:	SCALE:	SIZE:
5081	FLV	02/19/17	N/A	A1
DRAWN:	FLV	DATE:	DRAWING TYPE:	SHEET
5081	FLV	02/19/17		5 OF 8
MODEL(S)	1920/1920HPS/1920W			
PART NUMBER	0510000490.D			
REVISION	12			

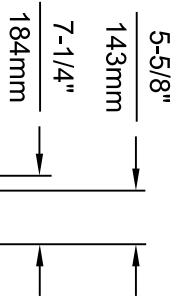
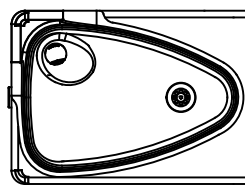
6700 MOUNTING PLATE
(BEHIND FINISH WALL)
- OR -
BOLT 1920 ONTO EXISTING WALL
(MOUNTING HARDWARE ONLY SUPPLIED
WITH 6700 SERIES MOUNTING PLATES)



INSTALLATION ABOVE HAWES 1047

* IF YOUR FOUNTAIN IS THIS STYLE USE THESE DIMENSIONS

1. SEE SEPARATE INSTALLATION DRAWINGS FOR MOUNTING PLATES AND BACK PANELS (SHOWN FOR REFERENCE - NOT SUPPLIED).
2. WHEN INSTALLING THIS UNIT, LOCAL, STATE OR FEDERAL CODES SHOULD BE ADHERED TO FOR INSTALLATION LOCATIONS, WASTE & SUPPLY REQUIREMENTS OTHER THAN SHOWN.



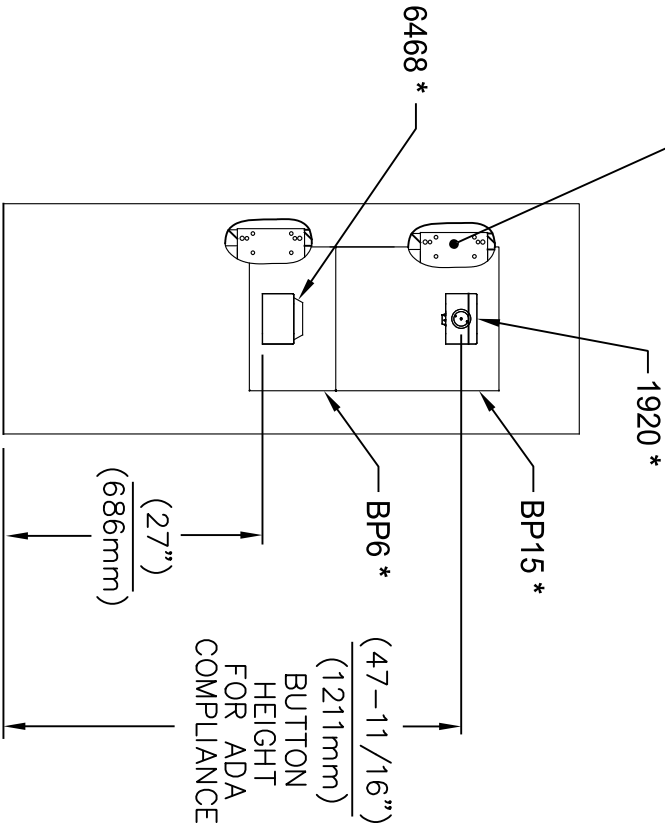
3/8" O.D. SUPPLY TUBING AND 3/8" O.D. PUSH-IN TEE SUPPLIED. (CONNECT TO FOUNTAIN SUPPLY LINE)



EQUIPMENT NO. REVISED PER BY:		DATE:		SCALE:		DRAWING TYPE:		INSTALLATION:	
5220	ECN: 3972	FV							
DRAWN: JP		DATE: 09/14/17		CHECKED: JC					
APPROVED: FV		DATE: 04/19/24		SCALE: N/A		DRAWING TYPE:		INSTALLATION:	
MODEL(S)		1920/1920HPS/1920W		SIZE: A1		SHEET: 6		OF: 8	
1455 KLEPPLE PLANE		SPARKS, NEVADA 89431		(775) 359-4712		FAX (775) 359-7424		E-MAIL: HAWS@HAWSCO.COM	
WEBSITE: WWW.HAWSCO.COM		PART NUMBER		0510000490.D		REVISION:		12	

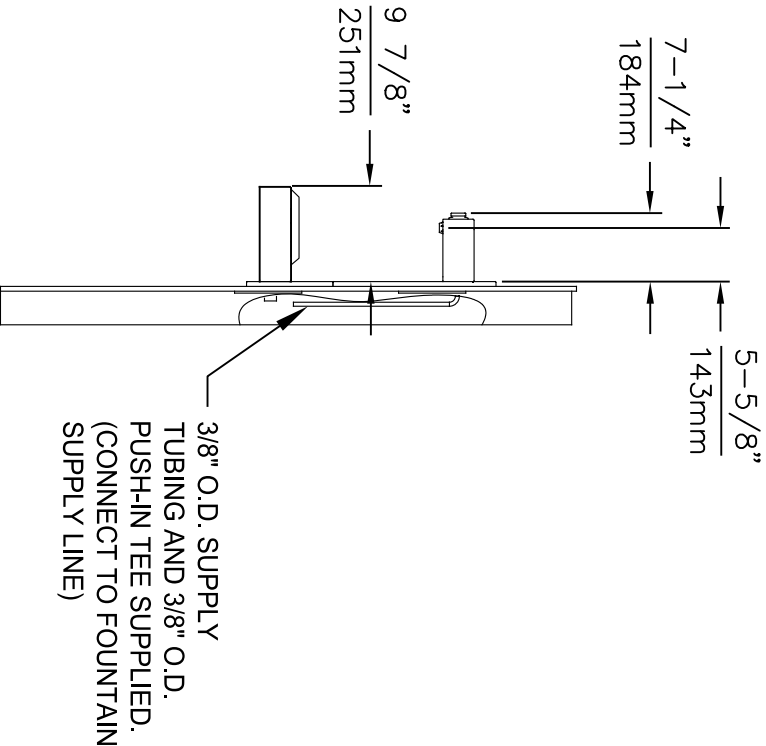
6700 MOUNTING PLATE
(BEHIND FINISH WALL)
- OR -
6700R RETROFIT PLATE
(ON TOP OF FINISH WALL)


* MODELS 1920 (BOTTLE FILLER),
BP15, BP6 (BACK PANELS) AND
6468 (WASTE DRIP TRAY) ARE
ALL AVAILABLE TOGETHER AS
MODEL 1922.

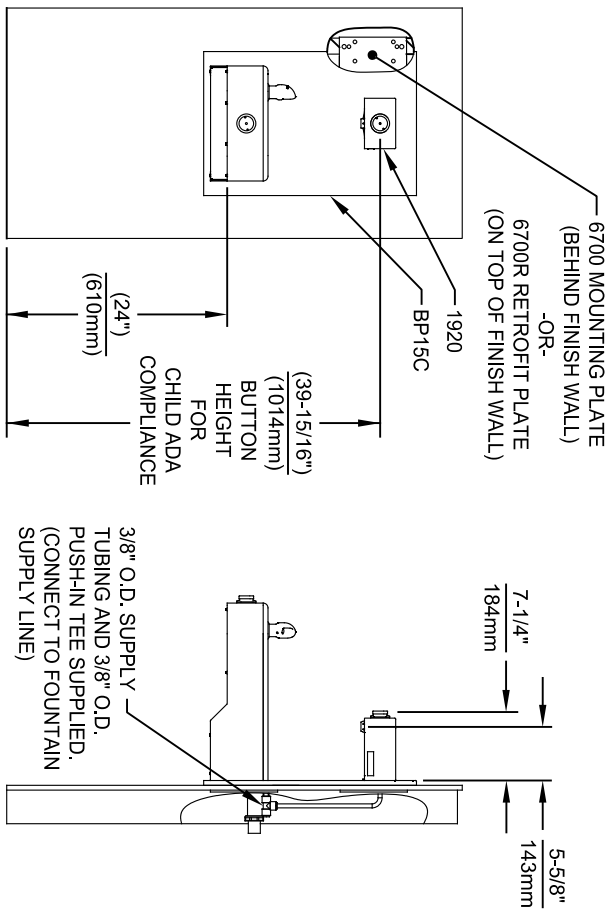


INSTALLATION ABOVE 6468

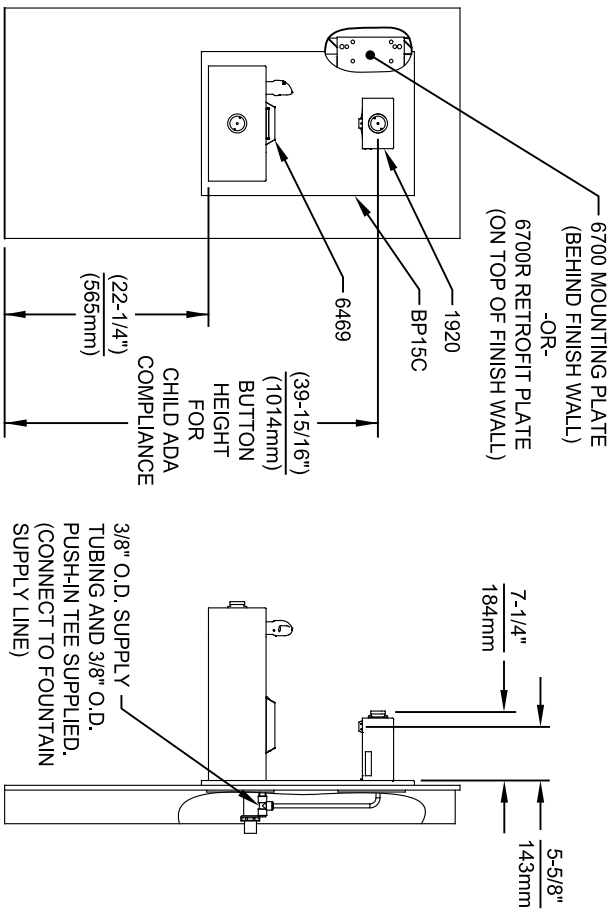
1. SEE SEPARATE INSTALLATION DRAWINGS FOR MOUNTING PLATE, WASTE DRIP TRAY AND BACK PANELS (SHOWN FOR REFERENCE - NOT SUPPLIED).
2. WHEN INSTALLING THIS UNIT, LOCAL, STATE OR FEDERAL CODES SHOULD BE ADHERED TO FOR INSTALLATION LOCATIONS, WASTE & SUPPLY REQUIREMENTS OTHER THAN SHOWN.



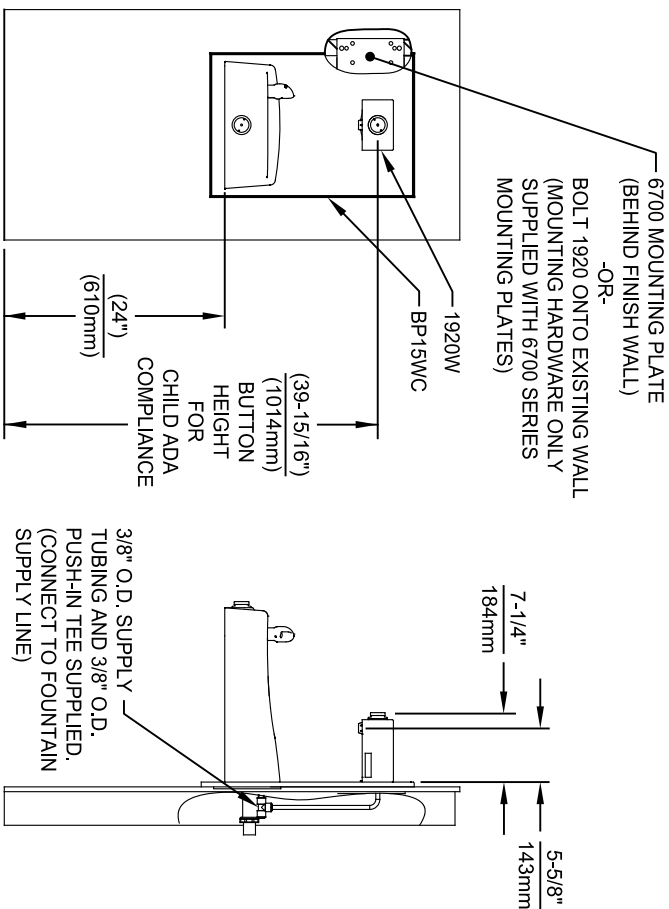
 <p>Haws Since 1906</p>		<p>1455 KLEPPLE LANE SPARKS, NEVADA 89431 (775) 359-4712 FAX (775) 359-7424 E-MAIL: HAWS@HAWSCO.COM WEBSITE: WWW.HAWSCO.COM</p>	
<p>ECON. NO. REVISED PER BY: FV DRAWN: ECON. 3972 DATE: 10/27/20 CHKD: JC DATE: 04/19/24</p>	<p>MODEL(S) 1920/1920HPS/1920W</p>	<p>SCALE: N/A DRAWING TYPE: INSTALLATION</p>	<p>PART NUMBER: 0510000490 D REVISION: 12</p>



INSTALLATION ABOVE HAWS 1107L & H1107.8 SERIES



INSTALLATION ABOVE HAWS 1109, 1109.14 & H1109.8 SERIES



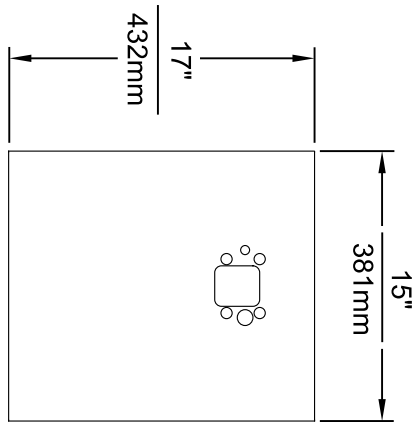
INSTALLATION ABOVE HAWS 1311

- NOTES:
- HEIGHT DIMENSIONS SHOWN ARE FOR CHILD ADA APPLICATIONS:
- BOTTLE FILLER HEIGHT AT 40" MAX.
- DRINKING FOUNTAIN BUBBLER HEIGHT AT 30" MAX.
(SEE SHEETS 3, 4 & 5 FOR ADULT ADA HEIGHT DIMENSIONS)
 - SEE SEPARATE INSTALLATION DRAWINGS FOR MOUNTING PLATES AND BACK PANELS (SHOWN FOR REFERENCE - NOT SUPPLIED).
 - WHEN INSTALLING THIS UNIT, LOCAL, STATE OR FEDERAL CODES SHOULD BE ADHERED TO FOR INSTALLATION LOCATIONS, WASTE & SUPPLY REQUIREMENTS OTHER THAN SHOWN.

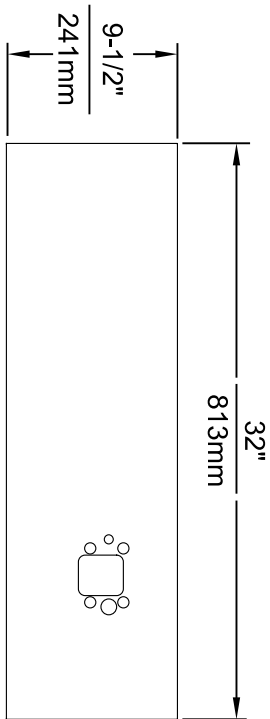
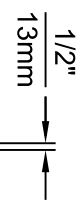
Haws
Since 1906

1455 KLEPPLELANE
SPARKS, NEVADA 89431
(775) 359-4712 FAX (775) 359-424
E-MAIL: HAWS@HAWSCO.COM
WEBSITE: WWW.HAWSCO.COM

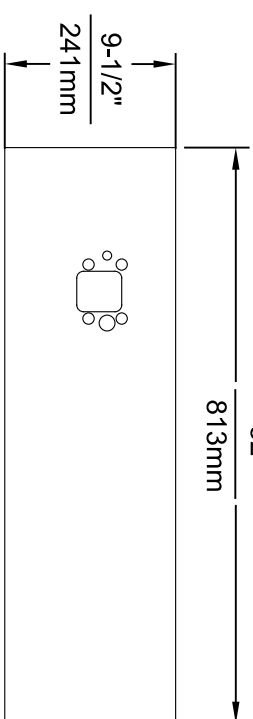
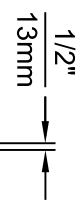
ECN NO. REVISED PER BY:	MODEL(S)
5807 ECN: 3972 FV	1920/1920HPS/1920W
DRAWN: FV	
DATE: 01/26/24 JC	
DATE: 04/19/24	
SCALE: N/A	DRAWING TYPE:
INSTALLATION:	SIZE: A1 SHEET: 8 OF 8
REVISION:	12
PART NUMBER:	0510000490 D



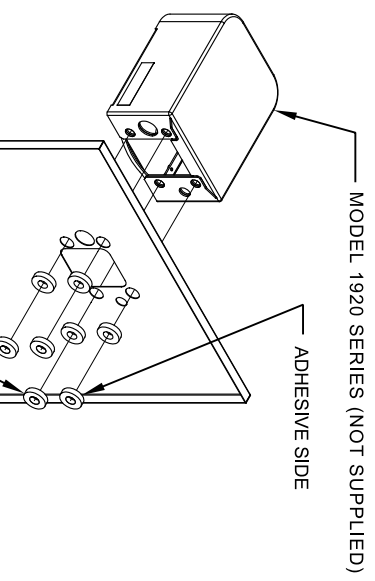
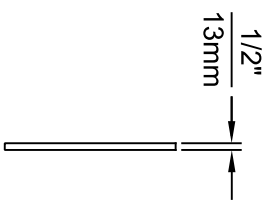
MODEL BP15 / BP15HPS / BP15W



MODEL BP32 / BP32HPS / BP32W



MODEL BP32R / BP32RW




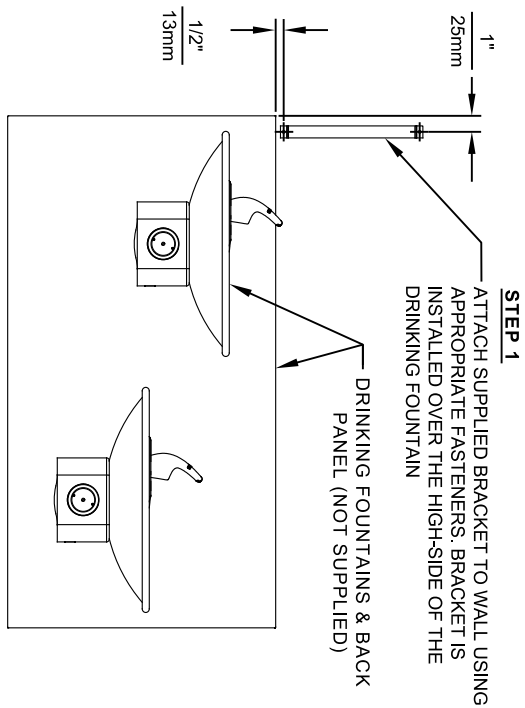
8 SPACERS (2 PER MOUNTING BOLT IF THE MOUNTING PLATE (MODEL 6700 - NOT SUPPLIED) IS INSTALLED BEHIND THE FINISHED WALL. USE 1 SPACER PER BOLT FOR RETROFITS WHERE THE MOUNTING PLATE (MODEL 6700R - NOT SUPPLIED) IS INSTALLED IN FRONT OF THE FINISHED WALL)

INSTALLATION OVER SINGLE FOUNTAIN

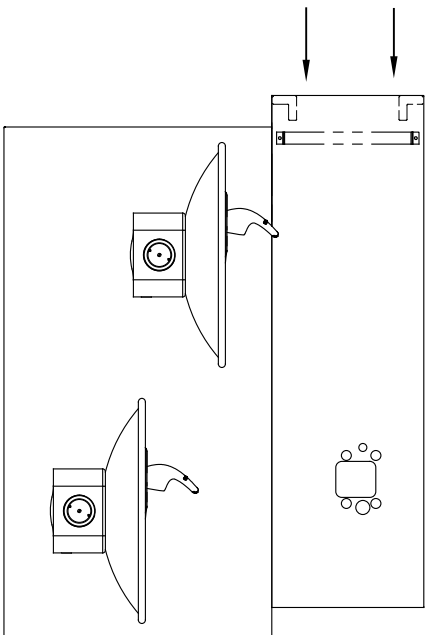
SHOWN FROM REAR
 (SEE SHEET 3 OF 3 FOR INSTALLATION OF SPACERS ON COMBINATION BOTTLE FILLER AND FOUNTAIN BACK PANELS FOR CHILD HEIGHT APPLICATIONS - MODELS BP15C & BP15WC)

- NOTES:
1. WHEN INSTALLING THIS UNIT, LOCAL, STATE OR FEDERAL CODES SHOULD BE ADHERED TO.
 2. BOTTLE FILLER SHOWN FOR REFERENCE ONLY (NOT SUPPLIED).

 <p>Haws Since 1906</p>		MODEL(S) DRAWING, BACK PANEL, SPACER INSTALLATION FOR BP15 SERIES & BP32 SERIES, BOTTLE FILLER	PART NUMBER 0510000493
EGN NO. REVISED PER BY: 5081 EGN: 5972 FV	DATE: 08/27/16 JC	SCALE: 1"=1"	REVISION: 5
DRAWN: M.J.	CHECKED: JC	DRAWING TYPE: INSTALLATION	SIZE: A1 SHEET 1 OF 3
APPROVED: FV	DATE: 04/19/24	INSTALLATION	1455 KLEPPLELANE SPARKS, NEVADA 89431 (775) 359-4712 FAX (775) 359-7424 E-MAIL: HAWS@HAWS.CO.COM WEBSITE: WWW.HAWS.CO.COM

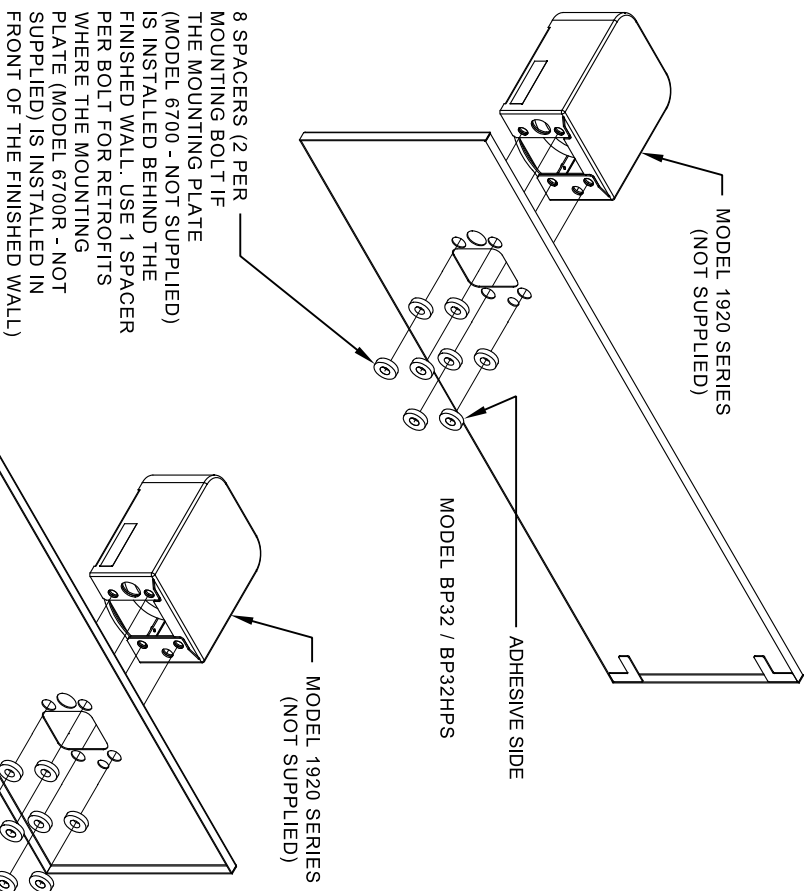


STEP 2
PLACE THE BACKPLATE AGAINST THE WALL AND SLIDE SIDWAYS SO THE TABS CATCH UNDER THE BRACKET.



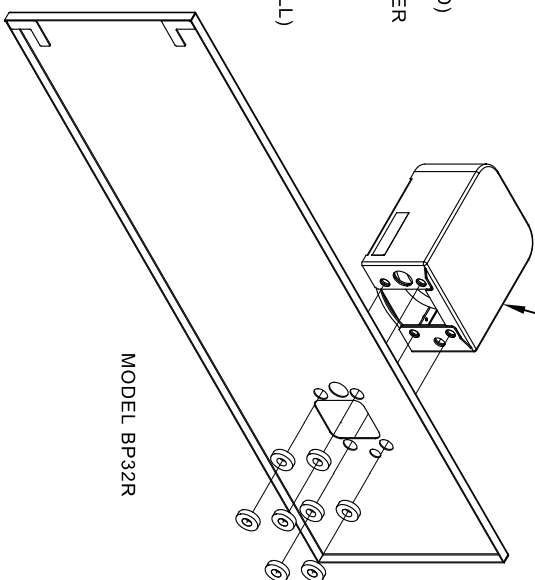
STEP 3
INSTALL THE BOTTLE FILLER (NOT SUPPLIED) PER THE INSTRUCTIONS SUPPLIED WITH THE UNIT.


- NOTES:
1. WHEN INSTALLING THIS UNIT, LOCAL, STATE OR FEDERAL CODES SHOULD BE ADHERED TO.
 2. BOTTLE FILLERS, DRINKING FOUNTAINS & DRINKING FOUNTAIN BACK PANELS SHOWN FOR REFERENCE ONLY (NOT SUPPLIED).

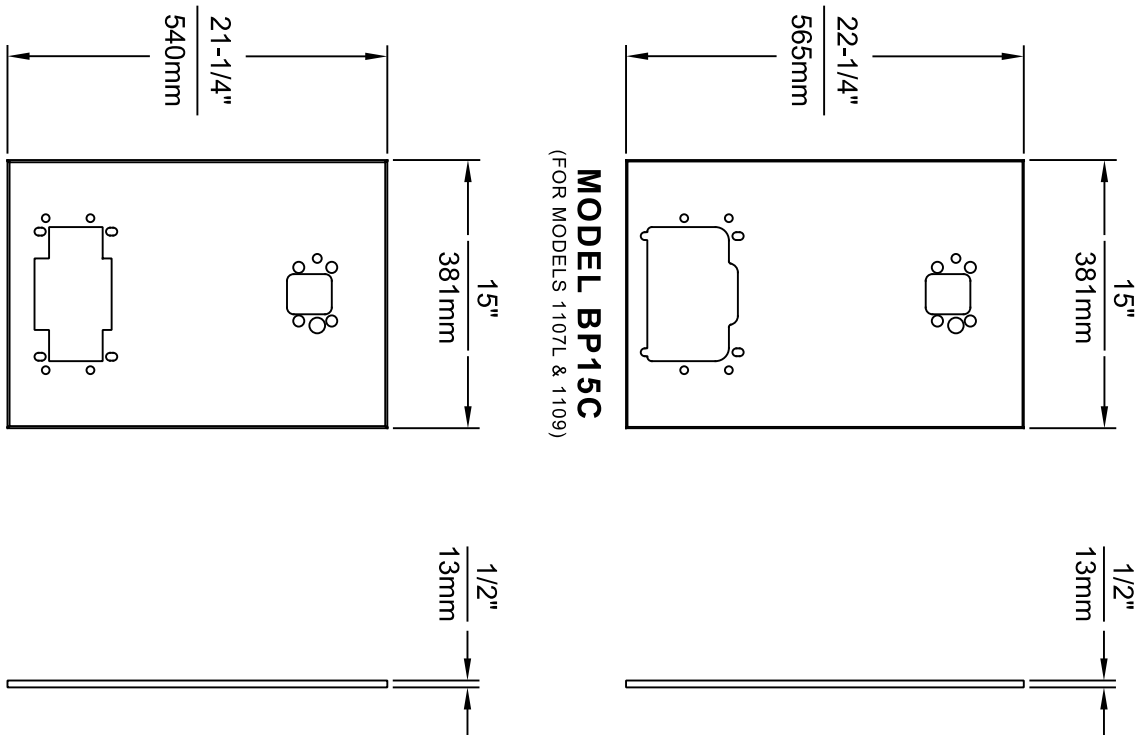


INSTALLATION OVER DOUBLE FOUNTAIN

SHOWN FROM REAR



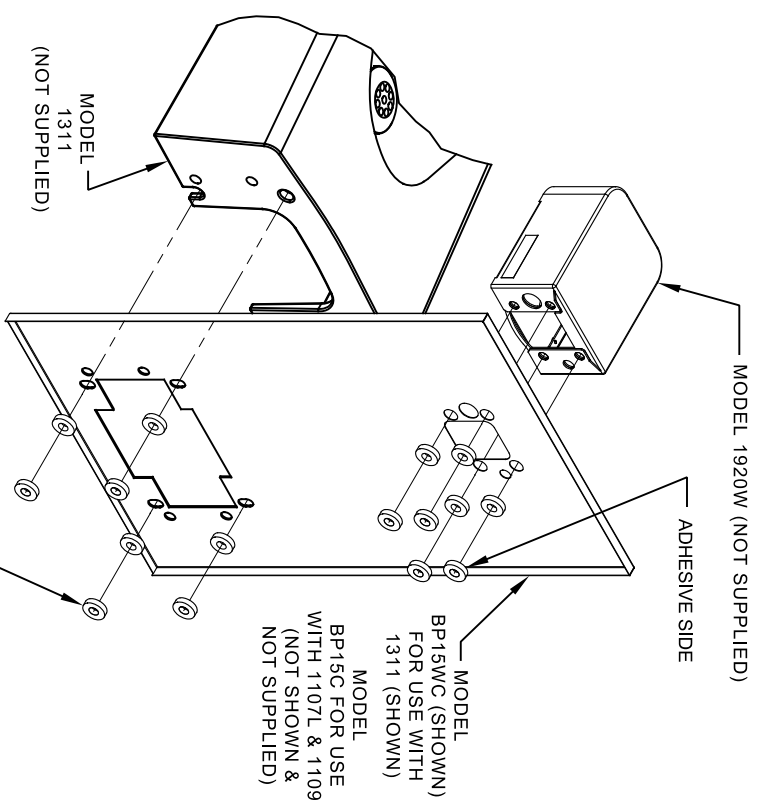
 <p>Haws Since 1906</p>		<p>1455 KLEPPLELANE SPARKS, NEVADA 89431 (775) 359-4712 FAX (775) 359-7424 E-MAIL: HAWS@HAWSCO.COM WEBSITE: WWW.HAWSCO.COM</p>
<p>EGN NO. REVISED PER BY: FV DRAWN: 5081 EGN: 3972 DATE: 02/02/17 CHK'D: JC M.I. DATE: 04/19/24 APPROVED: FV</p>	<p>MODEL(S) DRAWING, BACK PANEL, SPACER INSTALLATION FOR BP15 SERIES & BP32 SERIES, BOTTLE FILLER</p>	<p>PART NUMBER REVISION 0510000493 5</p>
<p>SCALE: 1:1 DRAWING TYPE: INSTALLATION SIZE: A1 SHEET: 2 OF 3</p>		



MODEL BP15WC
(FOR MODEL 1311)

NOTES:
1. WHEN INSTALLING THIS UNIT, LOCAL, STATE OR FEDERAL CODES SHOULD BE ADHERED TO.


2. BOTTLE FILLER AND DRINKING FOUNTAIN SHOWN FOR REFERENCE ONLY (NOT SUPPLIED).



16 SPACERS (2 PER MOUNTING BOLT IF BOTH MOUNTING PLATES (MODEL 6700 - NOT SUPPLIED) ARE INSTALLED BEHIND THE FINISHED WALL. USE 1 SPACER PER BOLT FOR RETROFITS WHERE BOTH MOUNTING PLATES (MODEL 6700R - NOT SUPPLIED) ARE INSTALLED IN FRONT OF THE FINISHED WALL)

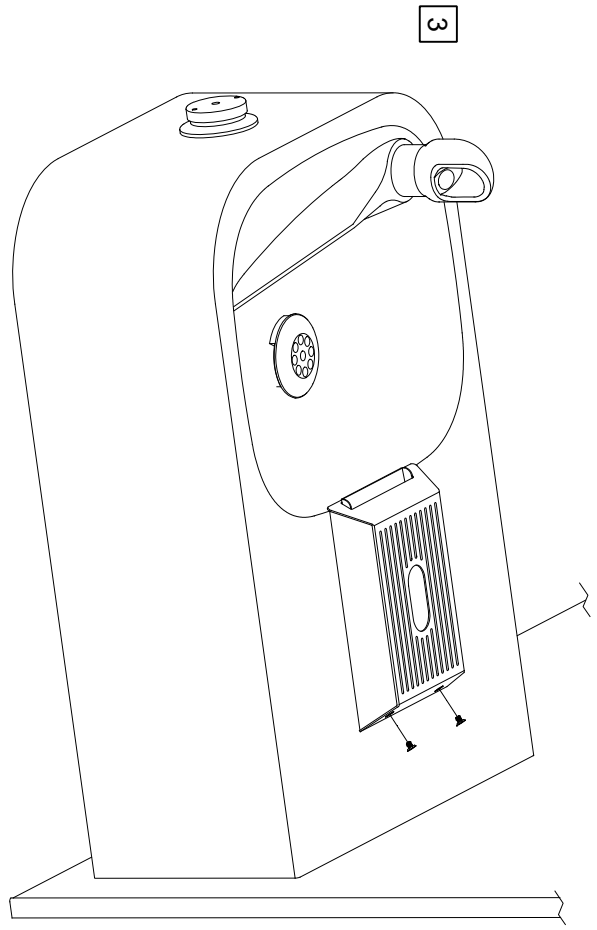
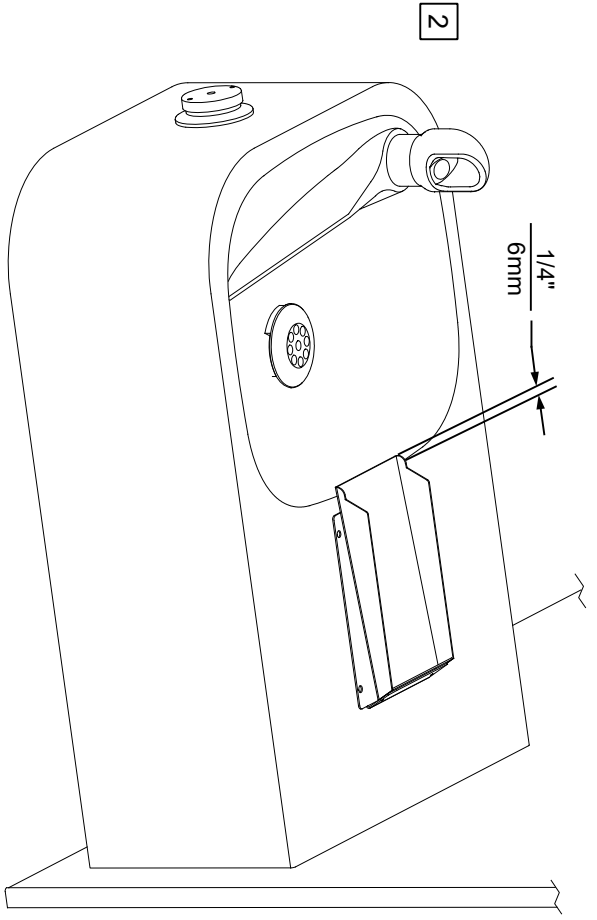
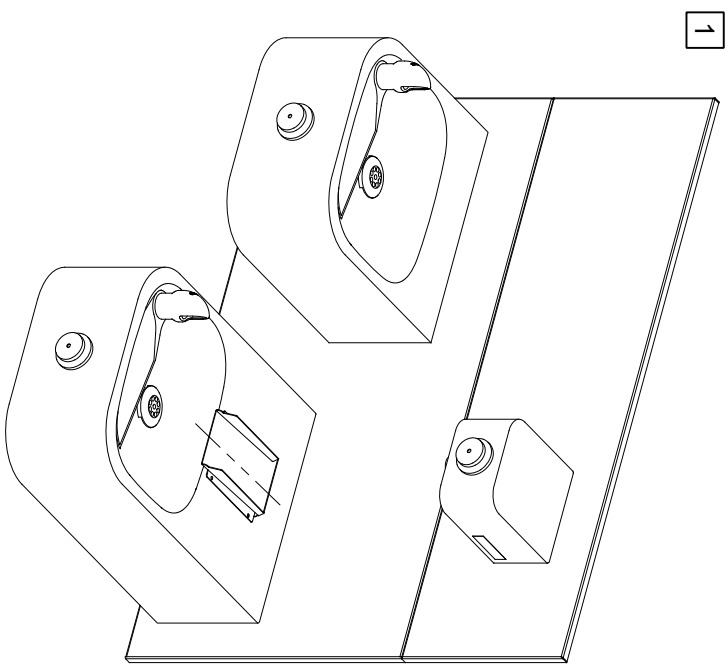
ONE PIECE INSTALLATION ON SINGLE FOUNTAIN

SHOWN FROM REAR
(MODEL BP15C & BP15WC ARE COMBINATION BOTTLE FILLER AND FOUNTAIN BACK PANELS USED FOR CHILD HEIGHT APPLICATIONS ONLY ON MODELS 1107L, 1109 & 1311 - BOTTLE FILLER & DRINKING FOUNTAIN NOT SUPPLIED)

 <p>Haws Since 1906</p>		<p>1455 KLEPPLELANE SPARKS, NEVADA 89431 (775) 359-4712 FAX (775) 359-4424 E-MAIL: HAWS@HAWSCO.COM WEBSITE: WWW.HAWSCO.COM</p>	
<p>ECON. NO. 5972 REVISED PER BY: FV DATE: 12/19/23 CHKD: JC DATE: 04/19/24</p>	<p>MODEL(S) DRAWING, BACK PANEL, SPACER INSTALLATION FOR BP15 SERIES & BP32 SERIES, BOTTLE FILLER</p>	<p>PART NUMBER 0510000493 REVISION 5</p>	<p>SCALE: 1" = 1" DRAWING TYPE: INSTALLATION SIZE: A1 SHEET 3 OF 3</p>

6469 STRAINER DRIP TRAY INSTALLATION


- 1 THE 6469 STRAINER DRIP TRAY ALLOWS THE INSTALLATION OF THE 1920 SERIES BOTTLE FILLER OVER HAWS 1109/1119 SERIES MODEL DRINKING FOUNTAINS. CENTER THE LOWER DRAIN PAN ALONG THE CENTERLINE OF THE FOUNTAIN.
- 2 EXTEND THE FRONT EDGE OF THE LOWER DRAIN PAN OVER THE EDGE OF THE FOUNTAIN BOWL BY APPROXIMATELY 1/4" (6mm). IT IS RECOMMENDED TO TEMPORARILY TAPE THE DRAIN PAN IN PLACE. INSTALL THE TOP COVER, AND ACTIVATE THE BOTTLE FILLER TO VERIFY THE WATER STREAM IS ALIGNED TO THE INLET HOLE. VERIFY THE LIP OF THE TOP COVER HANGS OVER THE EDGE OF THE FOUNTAIN BOWL.
- 3 MARK THE DRAIN PAN HOLE LOCATIONS ON THE FOUNTAIN. THE DRAIN PAN CAN NOW BE PERMANENTLY INSTALLED USING AN APPROPRIATE FASTENING METHOD (FASTENERS NOT SUPPLIED). FASTENING OPTIONS INCLUDE THRU BOLTS, RIVETS, TACK WELDS, AND DOUBLE-SIDED FOAM TAPE. INSTALL THE TOP COVER AND SECURE TO THE DRAIN PAN WITH THE SUPPLIED 4-40 FLAT HEAD SCREWS (QTY. 2).



HAWS		1455 KLEPPE LANE	
SPARKS, NEVADA 89431		(775) 359-4712 FAX (775) 359-7424	
E-MAIL: HAWS@HAWS.CO.COM		WEBSITE: WWW.HAWS.CO.COM	
ECON NO. REVISED PER BY:	MODEL(S)	PART NUMBER	REVISION
5150 FV	6469	0510000657.D	2
DATE: 01/10/17	DATE: 07/08/22	SCALE: 1:4	DRAWING TYPE: INSTALLATION
APPROVED: FV	SCALE: 1:4	DRAWING TYPE: INSTALLATION	SIZE: A
DATE: 07/08/22	SCALE: 1:4	DRAWING TYPE: INSTALLATION	SHEET 1 OF 1

6700 INDEX

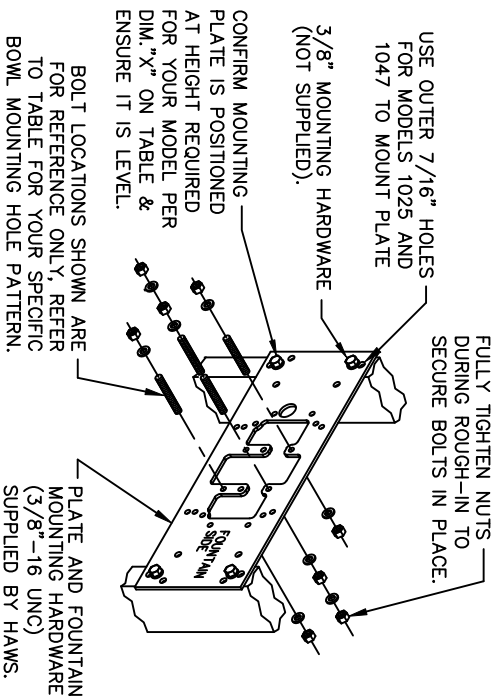
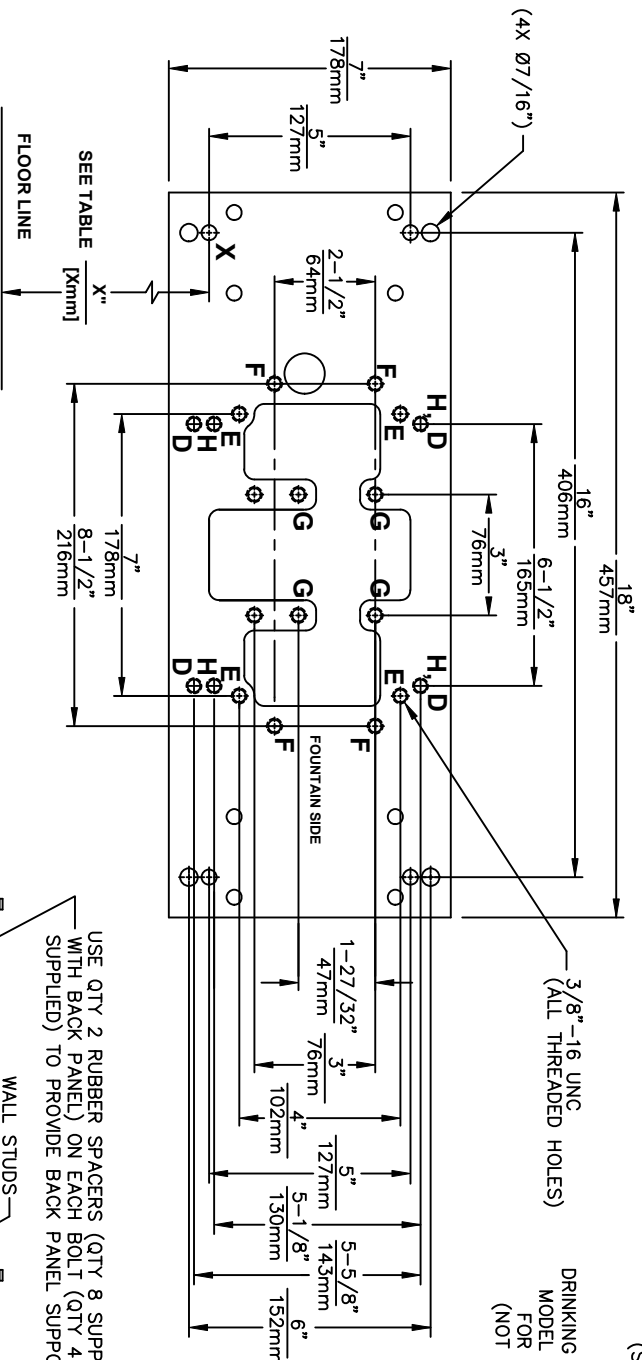
INSTALLATION WITH:	TYPICAL USES	SEE SHEET...	
GENERAL INSTALLATION		IMPORTANT INFORMATION FOR ALL INSTALLATIONS	3 OF 6
1001 BOWLS	HAWS SERIES 1001X, H1001.8X		3 OF 6
1107 BOWLS	HAWS SERIES 1107L, H1107.8		3 OF 6
1109 BOWLS	HAWS SERIES 1109X, H1109.8X		3 OF 6
1047 BOWLS	HAWS SERIES 1047		4 OF 6
1011 BOWLS	HAWS SERIES 1011X, H1011.8X		4 OF 6
1119 BOWLS	HAWS SERIES 1119X, H1119.8X		4 OF 6
1117 BOWLS	HAWS SERIES 1117X, H1117.8X	5 OF 6	
1311 BOWLS	HAWS SERIES 1311	5 OF 6	
1501 BOWLS	HAWS SERIES 1501	5 OF 6	
CHILD HEIGHT	HAWS 1107PCH, 1109PCH, 1311PCH	6 OF 6	



Haws
Since 1906

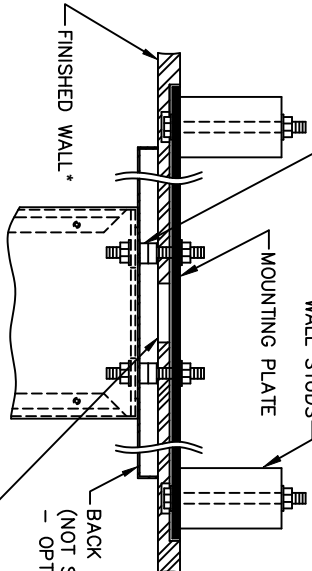
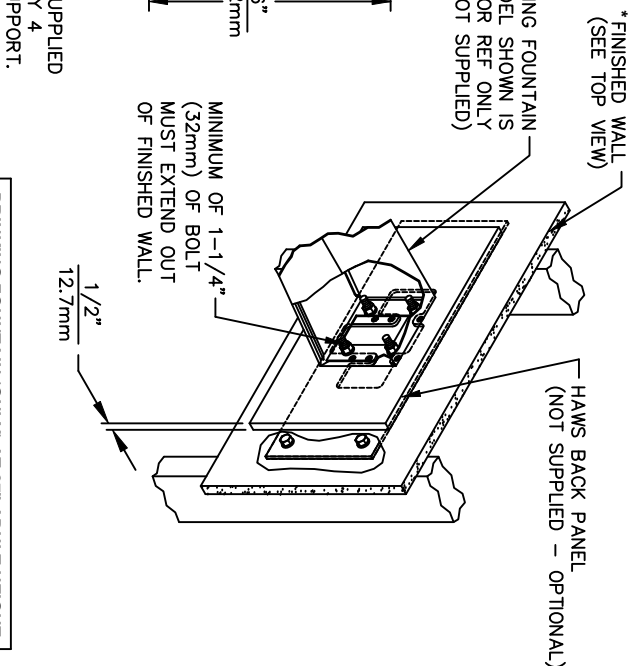
1455 KLEPPE LANE
SPARKS, NEVADA 89431
(775) 359-4712 FAX (775) 359-7424
E-MAIL: HAWS@HAWS.CO.COM
WEBSITE: WWW.HAWS.CO.COM

ECON NO. REVISED PER BY:		MODEL(S)		67/00	PART NUMBER 0002080016
CON. 6131	JG	DATE: 10/03/24	CHKD: JG		
DRAWN: JG	DATE: 11/26/24	SCALE: N/A	DRAWING TYPE:	INSTALLATION	SIZE: A
APPROVED: RH	DATE: 11/26/24			SHEET	1 OF 6
				REVISION	25



CAUTION

REGARDING CONCRETE/MASONRY WALL MOUNTING: DO NOT SECURE MOUNTING PLATE TO SAME SIDE OF WALL AS FOUNTAIN. AVOID COMPROMISING INTEGRITY OF WALL WHEN ANCHORING FOUNTAIN. IT IS RECOMMENDED THAT INSTALLER CALL TECHNICAL SUPPORT IF THERE ARE ANY QUESTIONS AS TO HOW TO OBTAIN A PROPER ANCHOR IN CONCRETE/MASONRY WALLS. 1-800-766-5612



TOP VIEW

6700 MOUNTING PLATE FOR USE WITH DRINKING FOUNTAINS AND WASTE DRIP TRAYS AT 27" ADULT HEIGHT (SEE SHEETS 2 - 5 FOR USE WITH BOTTLE FILLER 1920/1920HO SERIES AND CHILD HEIGHT APPLICATIONS)

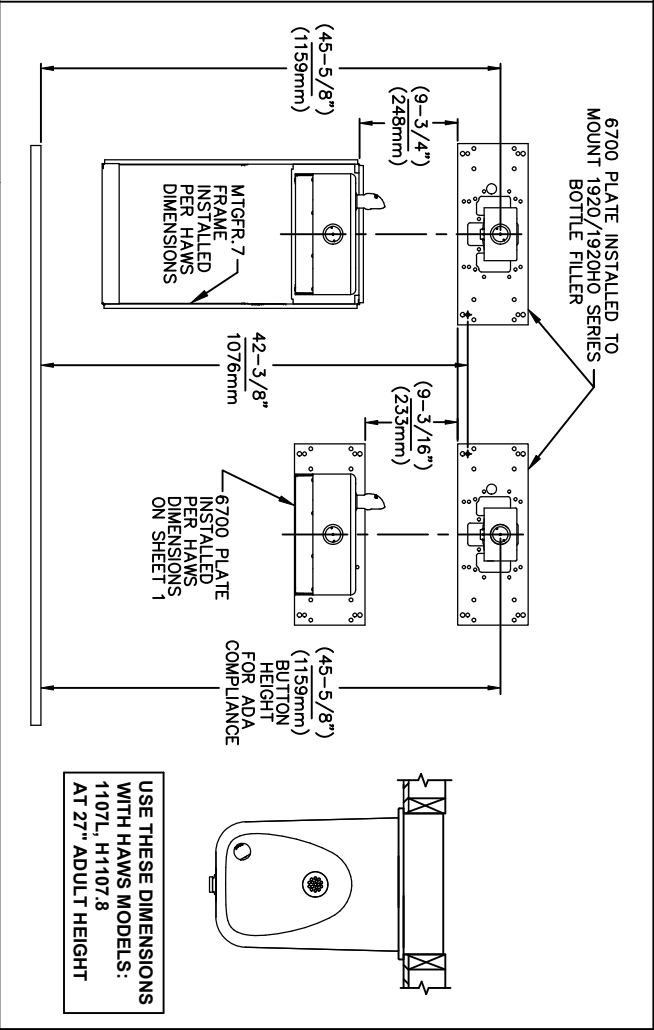
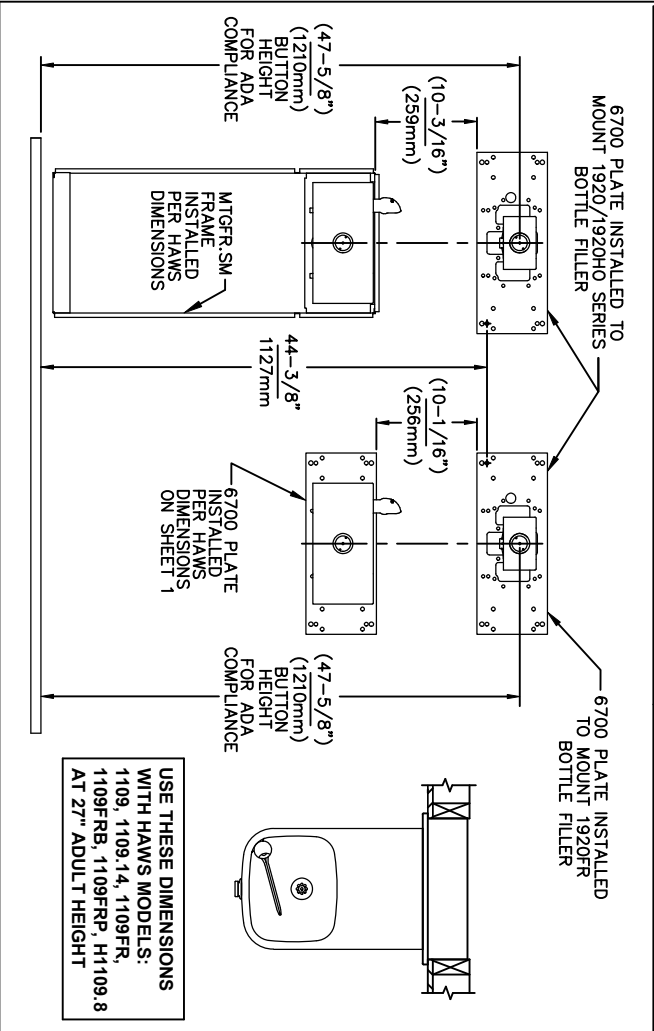
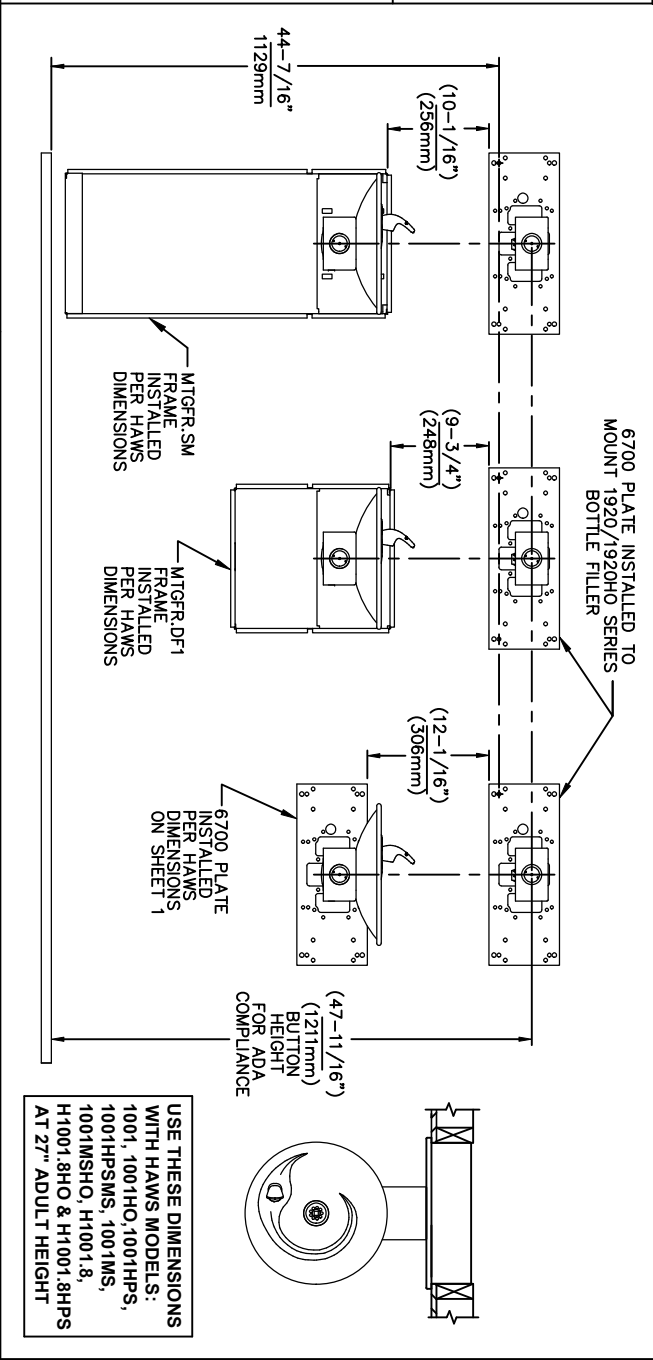
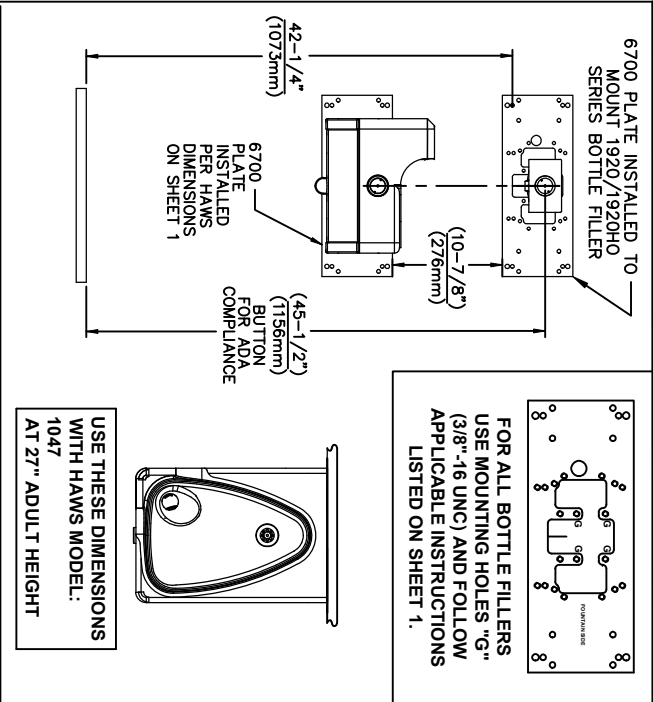
MODEL	USE BOWL MOUNTING HOLE PATTERN	USE "X" DIM. BELOW TO POSITION MOUNTING PLATE HOLE "X"
1001	"G"	25-3/8" [645mm]
1025	"D"	28-1/8" [714mm]
1047	"E"	24-3/8" [619mm]
1105	"H"	34-5/16" [872mm]
1107L	"F"	26-3/16" [665mm]
1109	"H"	27-5/16" [694mm]
1109.14	"H"	27-5/16" [694mm]
1109FR	"H"	27-5/16" [694mm]
1311	"E"	26-3/4" [679mm]

MODEL	WASTE DRIP TRAY (ONLY) AT 27" ADULT HEIGHT
6468	"G"
1922	"G"

*FINISH WALL OVER MOUNTING PLATE AND BEHIND BACK PANEL. MAKE SURE THAT FINISHED WALL EXTENDS WITHIN THE BRACKET/BOWL MOUNTING HOLES (TO PROVIDE SURFACE AREA FOR RUBBER SPACERS TO CONTACT).

1455 KLEPPE LANE
SPARKS, NEVADA, 89431
(775) 359-4712 FAX (775) 359-7424
E-MAIL: HAWWS@HAWSCO.COM
WEBSITE: WWW.HAWSCO.COM

ECN NO. REVISED PER BY:	MODEL(S)
6700	
DATE:	DATE:
09-03-03	1/26/24
CHKD:	SCALE:
JG	N/A
APPROVED:	DRAWING TYPE:
RH	INSTALLATION
	SIZE: A
	SHEET 2 OF 6
	REVISION: 25



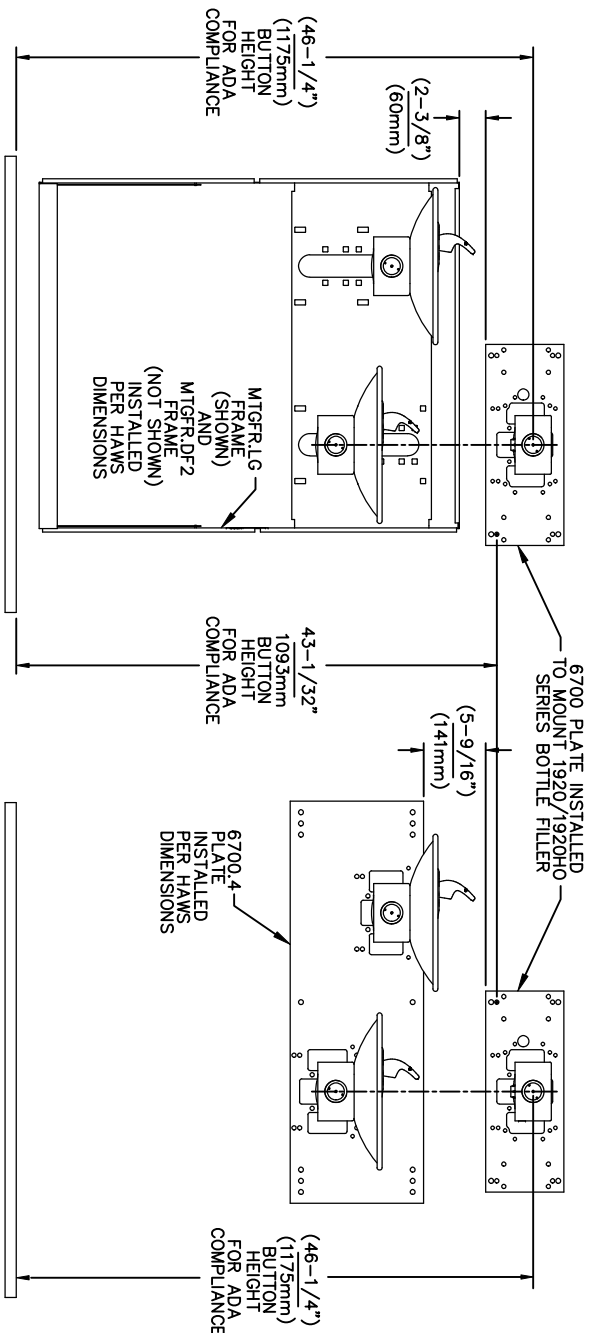
NOTES:
 1. WHEN INSTALLING THIS UNIT, LOCAL, STATE OR FEDERAL CODES SHOULD BE ADHERED TO.
 2. BACK PANELS (OPTIONAL) NOT SHOWN FOR CLARITY.

6700 MOUNTING PLATE
 FOR USE WITH BOTTLE FILLER
 (SEE SHEET 1 FOR USE WITH
 DRINKING FOUNTAINS)

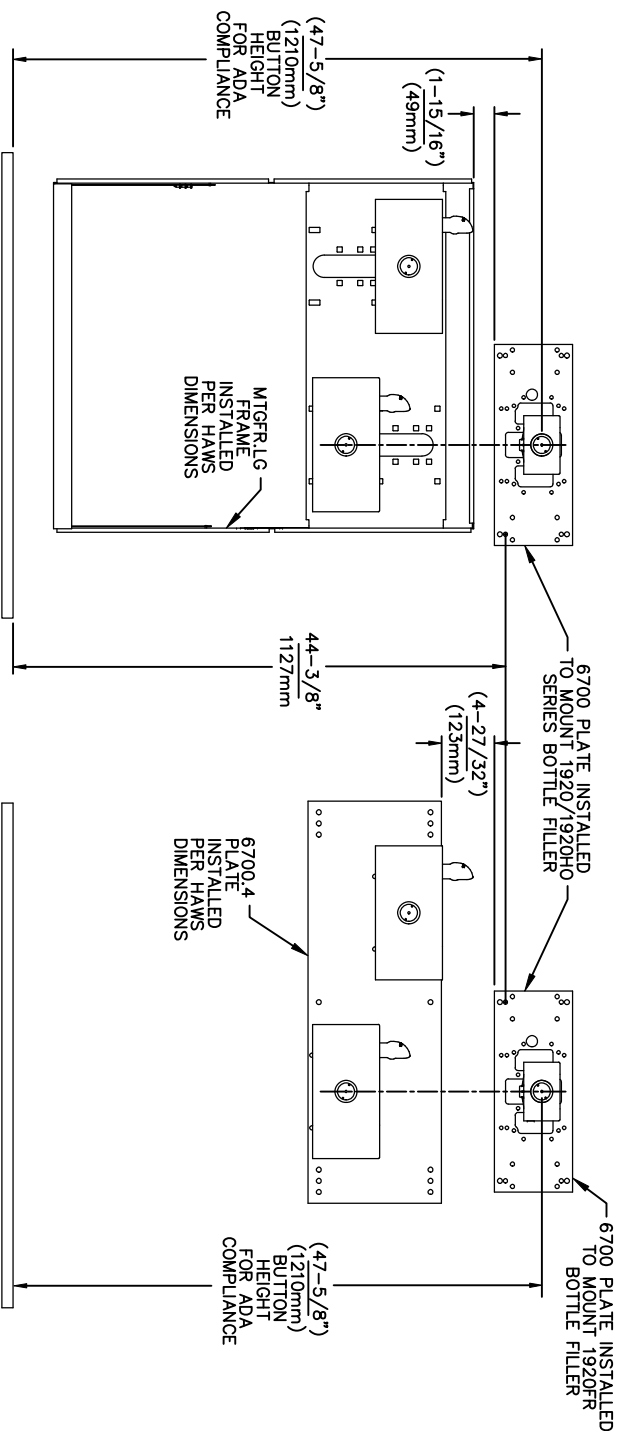
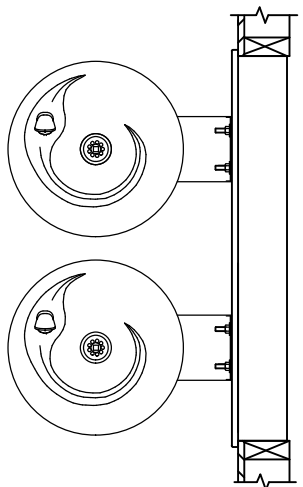
1455 KLEPPE LANE
 SPARKS, NEVADA, 89431
 (775) 359-4712 FAX (775) 359-7424
 E-MAIL: HAWS@HAWS.CO.COM
 WEBSITE: WWW.HAWS.CO.COM

Since 1906

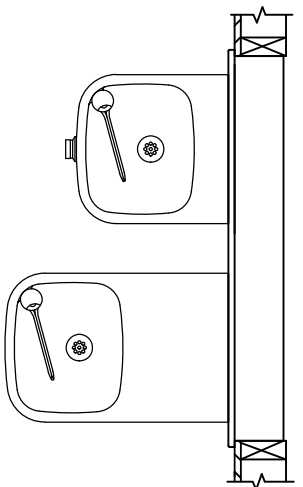
ECN NO.	REVISED PER BY:	MODEL(S)
02109/17	EV	67/00
DATE:	CHKD:	
02/09/17	JG	
APPROVED:	DATE:	
RH	11/26/24	
SCALE:	N/A	DRAWING TYPE:
		INSTALLATION:
SIZE:	A	SHEET:
		3 OF 6
REVISION:		25



USE THESE MOUNTING DIMENSIONS IF INSTALLING OVER HAWS FOUNTAIN
 MODEL: 1011, 1011HO, 1011HO2, 1011HPS, 1011HPSHO, 1011HPSHO2, 1011HPSMS, 1011HMS, 1011MSHO, 1011MSHO2, H1011.8, H1011.8HO, H1011.8HO2 & H1011.8HPSM AT 27" ADULT HEIGHT
 INSTALL THE 6700 ABOVE THE FOUNTAIN MOUNTING PLATE OR FRAME AT THE DIMENSION SHOWN FOR CORRECT BACKPANEL SPACING
 BACK PANELS FOR BOTTLE FILLERS (NOT SUPPLIED - OPTIONAL) ARE NOT SHOWN FOR CLARITY.



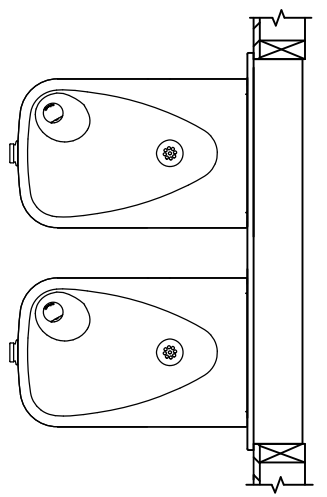
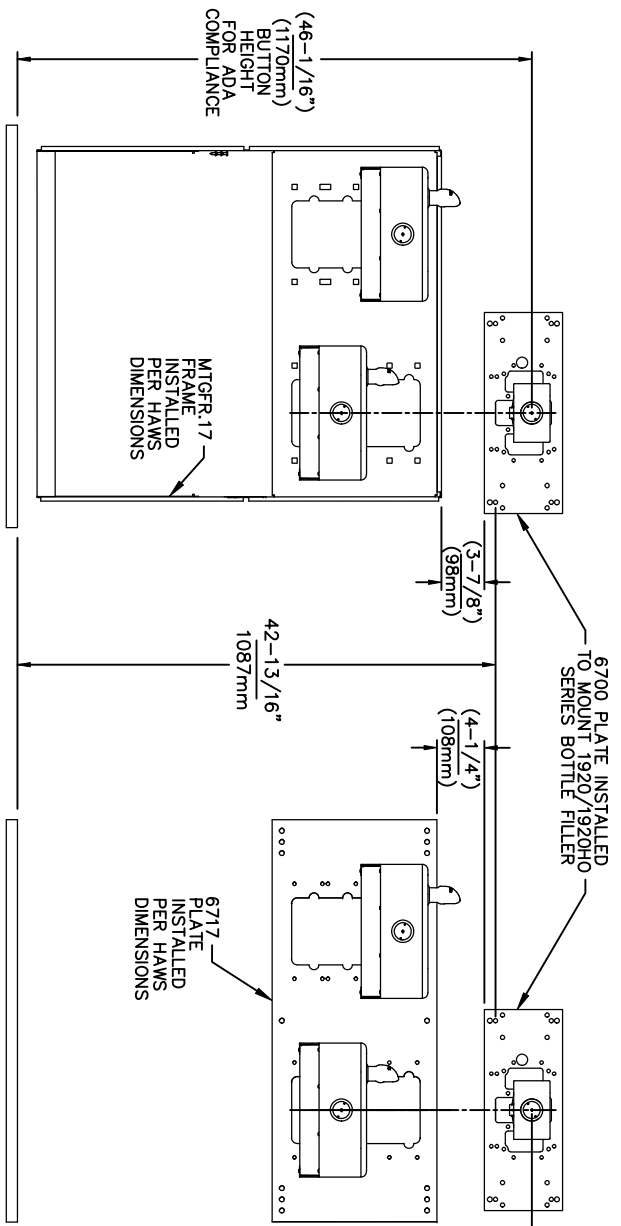
USE THESE MOUNTING DIMENSIONS IF INSTALLING OVER HAWS FOUNTAIN
 MODEL: 1119, 1119.14, 1119.14HO, 1119.14HO2, 1119FR, 1119FRB, 1119FRP, 1119HO, 1119HO2 & H1119.8 AT 27" ADULT HEIGHT
 INSTALL THE 6700 ABOVE THE FOUNTAIN MOUNTING PLATE OR FRAME AT THE DIMENSION SHOWN FOR CORRECT BACKPANEL SPACING
 BACK PANELS FOR BOTTLE FILLERS (NOT SUPPLIED - OPTIONAL) ARE NOT SHOWN FOR CLARITY.



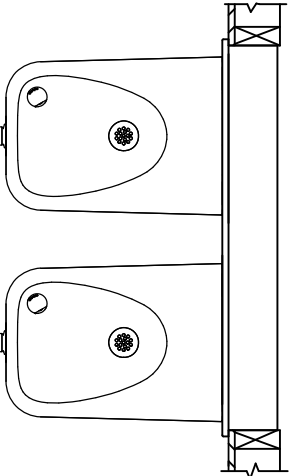
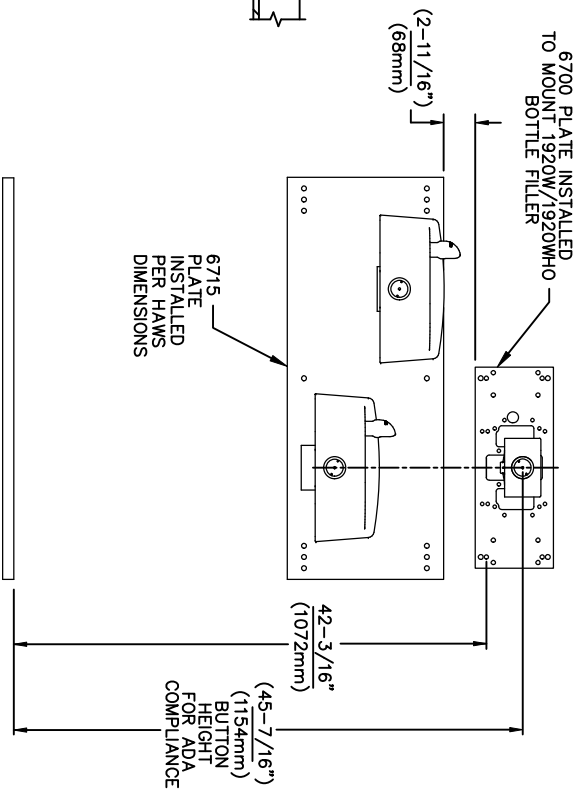
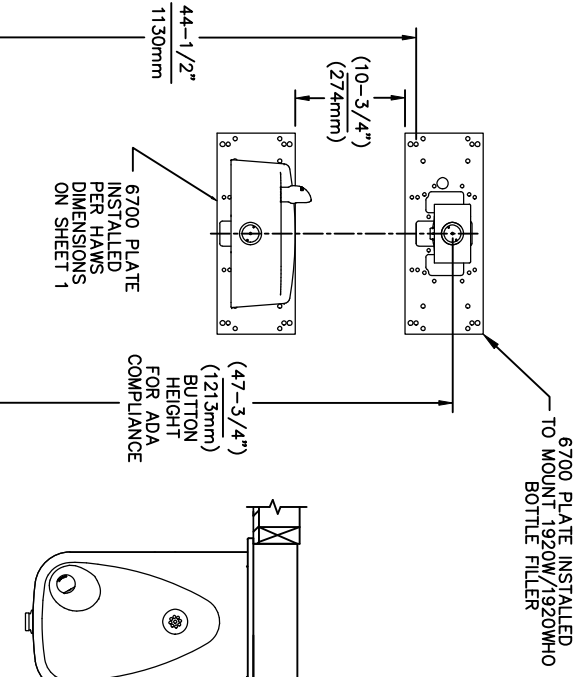
- NOTES:
- WHEN INSTALLING THIS UNIT, LOCAL, STATE OR FEDERAL CODES SHOULD BE ADHERED TO.
 - BACK PANELS (OPTIONAL) NOT SHOWN FOR CLARITY.

6700 MOUNTING PLATE
 FOR USE WITH BOTTLE FILLER
 (SEE SHEET 1 FOR USE WITH
 DRINKING FOUNTAINS)

		MODEL(S)	
Since 1906		6700	
ECN NO. REVISED PER BY:	DATE:	ECN NO. REVISED PER BY:	DATE:
5550	05/14/20	5550	05/14/20
DRAWN: FV	CHKD: JS	DRAWN: FV	CHKD: JS
APPROVED: RH	DATE: 11/20/24	APPROVED: RH	DATE: 11/20/24
SCALE: 1:13	DRAWING TYPE:	SCALE: 1:13	DRAWING TYPE:
INSTALLATION:	SIZE: A	INSTALLATION:	SIZE: A
SHEET 4	OF 6	SHEET 4	OF 6
1458 KLEPPE LANE SPARKS, NEVADA 89431 (775) 359-4712 FAX (775) 359-7424 E-MAIL: HAWS@HAWSCO.COM WEBSITE: WWW.HAWSCO.COM		PART NUMBER 0002080016 REVISION: 25	



USE THESE MOUNTING DIMENSIONS IF INSTALLING OVER HAWS FOUNTAIN MODEL: 1117L, 1117LHO, 1117LHO2, H1117.8, H1117.8HO, H1117.8HO2, H1117LN, 1117LNHO, 1117LNHO2 AND H1117LN.8 USE A 6700.4 MOUNTING PLATE & NOT SHOWN - SEE MANUAL(S) AT 27" ADULT HEIGHT
 INSTALL THE 6700 ABOVE THE FOUNTAIN MOUNTING PLATE OR FRAME AT THE DIMENSION SHOWN FOR CORRECT BACKPANEL SPACING
 BACK PANELS FOR BOTTLE FILLERS (NOT SUPPLIED - OPTIONAL) ARE NOT SHOWN FOR CLARITY.

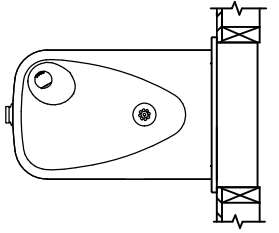
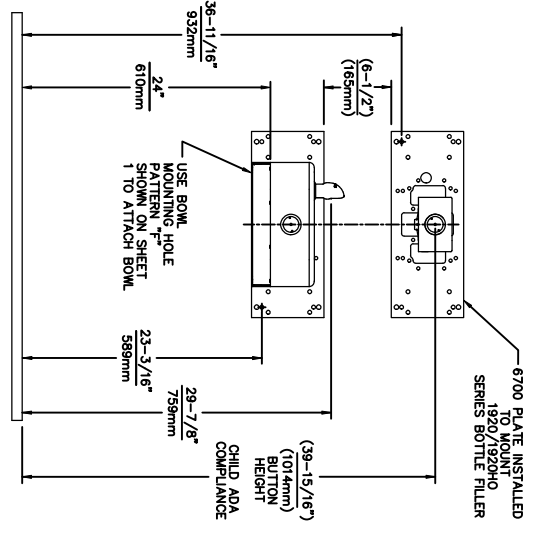


USE THESE MOUNTING DIMENSIONS IF INSTALLING OVER HAWS FOUNTAIN MODEL: 1311, 1501
 INSTALL THE 6700 ABOVE THE FOUNTAIN MOUNTING PLATE AT THE DIMENSION SHOWN FOR CORRECT BACKPANEL SPACING (IF APPLICABLE).
 BACK PANEL FOR BOTTLE FILLER (NOT SUPPLIED - OPTIONAL) IS NOT SHOWN FOR CLARITY.

- NOTES:
 1. WHEN INSTALLING THIS UNIT, LOCAL, STATE OR FEDERAL CODES SHOULD BE ADHERED TO.
 2. BACK PANELS (OPTIONAL) NOT SHOWN FOR CLARITY.

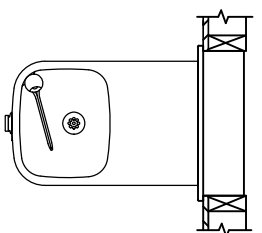
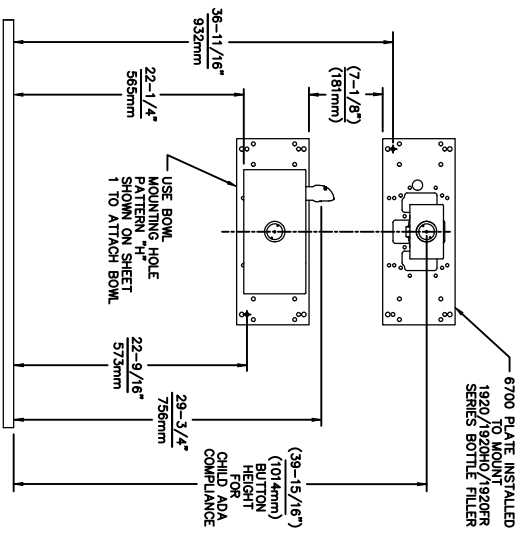
6700 MOUNTING PLATE
 FOR USE WITH BOTTLE FILLER
 (SEE SHEET 1 FOR USE WITH
 DRINKING FOUNTAINS)

		MODEL(S)	
Since 1906		6700	
ECN NO. REVISED PER BY:	DATE:	ECN NO. REVISED PER BY:	DATE:
5550	05/14/20	5550	05/14/20
DRAWN: FV	CHKD: JS	DRAWN: FV	CHKD: JS
APPROVED: RH	DATE: 11/28/24	APPROVED: RH	DATE: 11/28/24
SCALE: 1:13		DRAWING TYPE: INSTALLATION	
SIZE: A		SHEET: 5 OF 6	
1458 KLEPPE LANE SPARKS, NEVADA, 89431 (775) 359-4712 FAX (775) 359-7424 E-MAIL: HAWS@HAWSCO.COM WEBSITE: WWW.HAWSCO.COM		PART NUMBER: 0002080016 REVISION: 25	



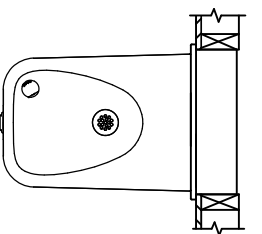
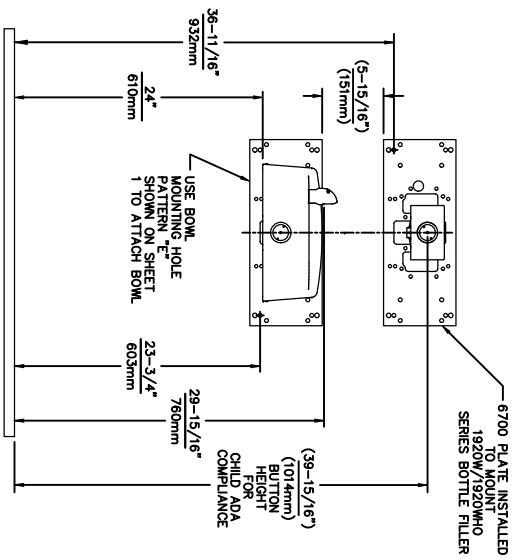
USE THESE DIMENSIONS WITH HAWS
MODEL:
1107L
AT 24" CHILD HEIGHT *

6700 MOUNTING PLATE
FOR USE WITH BOTTLE FILLER AT
40" MAX. AND
DRINKING FOUNTAIN
AT 24" AND BUBBLER HEIGHT AT 30"
MAX. FOR CHILD ADA HEIGHT
(SEE SHEETS 1 & 2 FOR USE WITH
DRINKING FOUNTAIN AT 27" ADULT
HEIGHT DIMENSIONS)



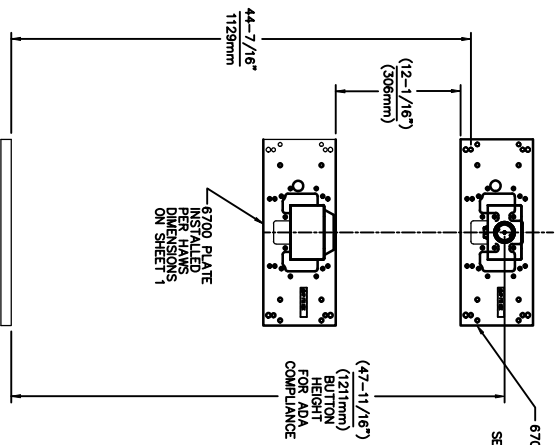
USE THESE DIMENSIONS WITH HAWS
MODEL:
1109, 1109S14, 1109FR, 1109FRB, 1109FRP
AT 22-1/4" HEIGHT TO ACHIEVE 30" MAX.
CHILD ADA BUBBLER HEIGHT * NOTE:
MUST USE PARALLEL APPROACH WITH
THIS BOWL COMBINATION.

6700 MOUNTING PLATE
FOR USE WITH BOTTLE FILLER AT
40" MAX. AND
DRINKING FOUNTAIN
BUBBLER HEIGHT AT 30" MAX.
FOR CHILD ADA HEIGHT
MUST USE PARALLEL APPROACH
WITH THIS BOWL COMBINATION
(SEE SHEETS 1 & 2 FOR USE WITH
DRINKING FOUNTAIN AT 27" ADULT
HEIGHT DIMENSIONS)



USE THESE DIMENSIONS WITH HAWS
MODEL:
1107L
AT 24" CHILD HEIGHT *

6700 MOUNTING PLATE
FOR USE WITH BOTTLE FILLER AT
40" MAX. AND
DRINKING FOUNTAIN
AT 24" AND BUBBLER HEIGHT AT 30"
MAX. FOR CHILD ADA HEIGHT
(SEE SHEETS 1 & 4 FOR USE WITH
DRINKING FOUNTAIN AT 27" ADULT
HEIGHT DIMENSIONS)



6700 MOUNTING PLATE
FOR USE WITH BOTTLE FILLER
(SEE SHEET 1 FOR USE WITH
DRINKING FOUNTAINS
AND WASTE DRIP TRAY)

INSTALL THE 6700 ABOVE THE
DRIP TRAY MOUNTING PLATE AT
THE DIMENSION SHOWN FOR CORRECT
BACK PANEL SPACING (IF APPLICABLE,
Bp15, B6 BACK PANELS * NOT SHOWN,
(NOT SUPPLIED - OPTIONAL) IS NOT
SHOWN FOR CLARITY.

NOTES:
1. WHEN INSTALLING THIS UNIT, LOCAL, STATE
OR FEDERAL CODES SHOULD BE ADHERED TO.
2. ONE PIECE BACK PANELS Bp15C (FOR USE WITH MODELS 1107L,
1109 SERIES & BOTTLE FILLER) & Bp15WC (FOR USE WITH MODEL
1311 & BOTTLE FILLER) ARE USED FOR CHILD HEIGHT APPLICATIONS
AND ARE OPTIONAL (NOT SHOWN FOR CLARITY).

Haws®
Since 1906

1455 KLEPPPE LANE
SPARKS, NEVADA 89431
(775) 359-4712 FAX (775) 359-7424
E-MAIL: HAWS@HAWS.CO.COM
WEBSITE: WWW.HAWS.CO.COM

ECN NO. REVISED PERBY: MODEL(S)
5893 1 ENR.6131 FV. 6700
DRAWN: DATE: CHK'D: FV.
FV. 07/26/23 JG.
APPROVED: DATE: SCALE: 1:13 DRAWING TYPE: INSTALLATION SHEET 6 OF 6
RH 11/28/24

PART NUMBER: 0002080016
REVISION: 25