



model H1001.8HPSHO

Chilled Vandal-Resistant ADA Motion-Activated High Polished Fountain

FEATURES & BENEFITS

HANDS FREE

Touchless operation for safety and peace of mind.

CONSTRUCTION

Rugged ADA accessible 18 gauge Type 304 high polished Stainless Steel swirl design bowl, 14 gauge Type 304 high polished Stainless Steel bracket, and a vandal-resistant bottom plate provides a long lasting unit with added peace of mind.

QUALITY CONTROL

Pre-built fountain is pressure tested to ensure no leaks and proper functionality.

MOUNTING

Heavy-duty 16-gauge galvanized steel mounting frame with welded-in heavy-duty 10 gauge mounting plate with pre-punched mounting holes. Further convenience is given to the chiller with the integral fold-out shelf.

BUBBLER HEAD

Polished chrome-plated brass bubbler head with integral laminar flow prevents splashing while providing a superior flow pattern. The integral 11/16" dia. basin shank and stainless anti-rotation roll pin for vandal resistance strength. Shielded, angled stream opening provides a steady source of drinking water at .45 gpm.

DRINKING FOUNTAIN VALVE

Fountain incorporates a touchless sensor operated stainless steel solenoid valve controlled by a transformer for hands-free operation. A pressure regulator is used to adjust the bubbler flow according to incoming water pressures.

TAMPER RESISTANT

30-second obstruction time-out to reduce tampering of sensor.

VANDAL-RESISTANT

The bubbler head, push button, round bowl, drain strainer and bottom plate are locked in place, discouraging unwanted vandal tampering.

OPTIONS

Bottle Filler: Model 1920HOHPS, touchless bottle filler can be a stand-alone station, or mounted above Haws 1001HPS and 1011HPS series drinking fountain models.

Back Panel: Model BP15HPS, high polished stainless steel 15 inch back panel for Model 1920.

Water Filter: Model 6426, 10" x 2" (25.4 x 5.1 cm), in-line lead removal element that reduces lead from incoming water supply.

For more information, visit www.hawsc.com or call (888) 640-4297.



SPECIFICATIONS

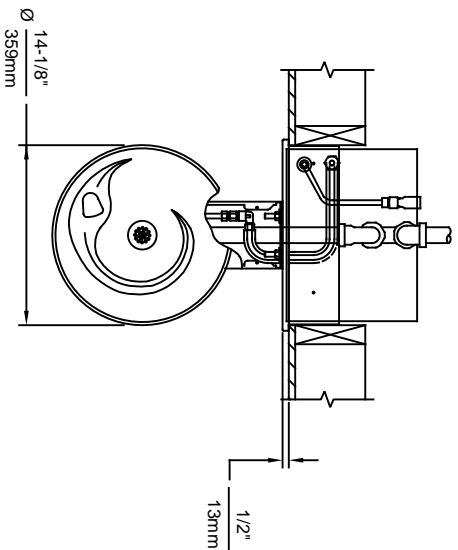
Model H1001.8HPSHO vandal-resistant electric ADA wall mounted motion-activated drinking fountain shall include an 18 gauge Type 304 polished stainless steel basin with integral swirl design, 14 gauge Type 304 polished stainless steel wall bracket, 100% lead-free waterways, touchless sensor operated stainless steel solenoid valve with 30-second obstruction time-out controlled by a transformer, polished chrome-plated brass vandal-resistant bubbler head with integral laminar anti-squirt flow, chrome-plated brass vandal resistant waste strainer, vandal-resistant bottom plate, polished stainless steel back panel and louvered intrusion-proof grill, and 1-1/4" O.D. (3.2 cm) waste pipe. The R-134a refrigeration system is hermetically sealed and delivers a minimum of 8 gph (30.3 L) of water at 50° F (10° C) cooled from 80° F (26.7° C) inlet water at 90° F (32.2° C) ambient. 115 Volts, 60Hz, rated watts: 370, full load amps: 5

REQUIRES MODEL HCR8 AND MTGFR.SM PRICED SEPARATELY.

FOR INDOOR USE ONLY APPLICATIONS

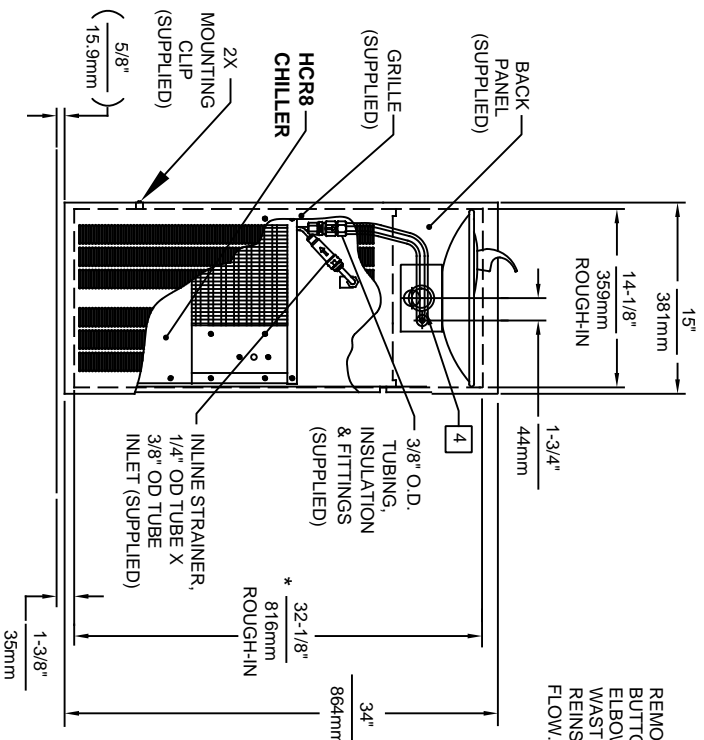
This series is precisely mounted, making it a nice addition to any surrounding. Specifically, this type fountain may be placed in settings such as: schools, office buildings, shopping malls, and other indoor environments where there is a demand for a chilled water source and/or wheelchair access. Electric water coolers are not recommended or designed for outdoor applications or enclosed pool areas (chlorine). These conditions may void warranty. Model meets all current Federal Regulations for the disabled including those in the Americans with Disabilities Act. Haws manufactures drinking fountains, faucets and electric water coolers to be lead-free by all known definitions including NSF/ANSI/CAN 61-Section 9, NSF/ANSI/CAN 372, California Proposition 65, and the Federal Safe Drinking Water Act. Product is compliant to California Health and Safety Code 116875 (AB 1953-2006), and NSF/ANSI/CAN 61: Q ≤ 1. Haws electric water coolers comply with ARI Standard 1010 and ANSI A117.1, and are listed by Underwriter Laboratories to U.S. and Canadian standards.



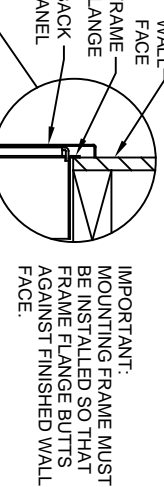
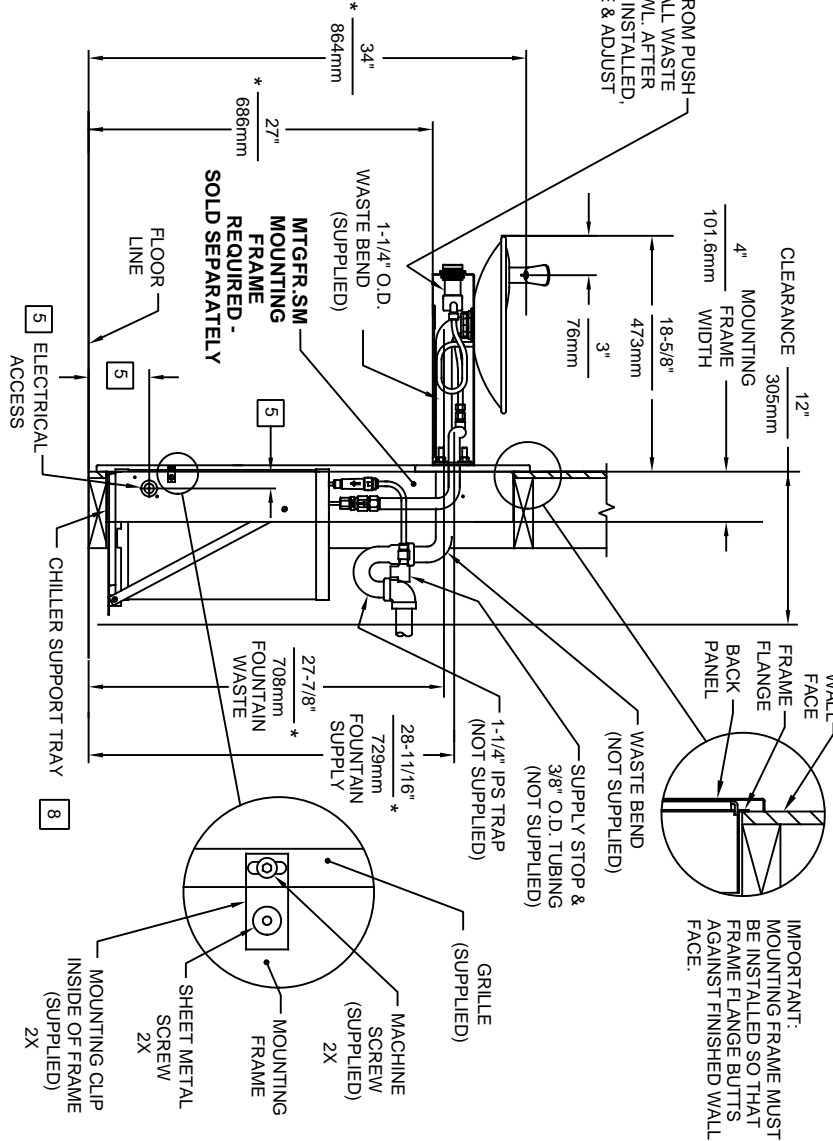


Available with hands off sensor in lieu of push button

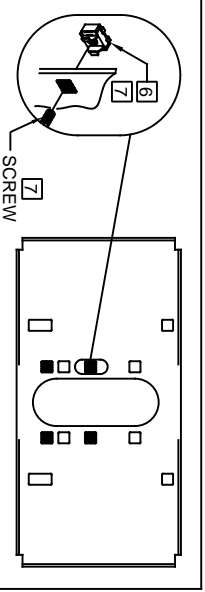
- NOTES:**
- HOLD ROUGH-IN DIMENSIONS $\pm 1/8"$ (3.2mm).
 - WHEN INSTALLING THIS UNIT, LOCAL, STATE, OR FEDERAL CODES SHOULD BE ADHERED TO. FOR DIMENSIONS (LOCATIONS), WASTE AND SUPPLY REQUIREMENTS, OTHER THAN SHOWN, DIMENSIONS MARKED (*) MUST BE ADJUSTED ACCORDINGLY.
 - INSTALLER MUST PROVIDE TRAP FOR PROPER INSTALLATION.
 - REFER TO 587ASS OPERATION AND MAINTENANCE MANUAL FOR PUSH BUTTON AND VALVE INSTALLATION/MAINTENANCE INSTRUCTIONS.
 - REFER TO MTGR-SM INSTALLATION DRAWING FOR ROUGH-IN DIMENSIONS.
 - INSERT 5/16"-18 PANEL INSERTS FROM OPPOSITE SIDE AT LOCATIONS SHOWN BY DARKENED HOLES.
 - FOUNTAIN REMOVAL: FIRST REMOVE SCREWS AND THEN SQUEEZE CLIPS ON NUT RETAINER TO POP OUT. INSTALL IS REVERSE OF REMOVAL.
 - ALIGN HOLES IN CHILLER SUPPORT TRAY WITH HOLES IN FRAME AND FASTEN WITH #10 SHEET METAL SCREWS.



REMOVE VALVE FROM PUSH BUTTON TO INSTALL WASTE ELBOW ONTO BOWL. AFTER WASTE ELBOW IS INSTALLED, REINSTALL VALVE & ADJUST FLOW.



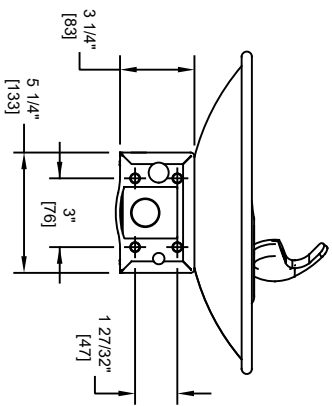
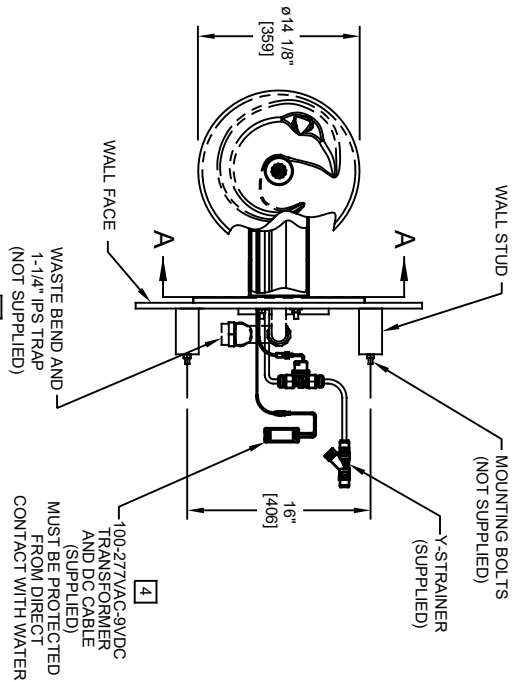
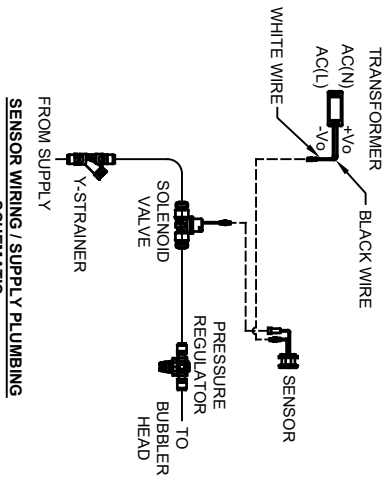
BOWL MOUNTING PATTERN DETAIL



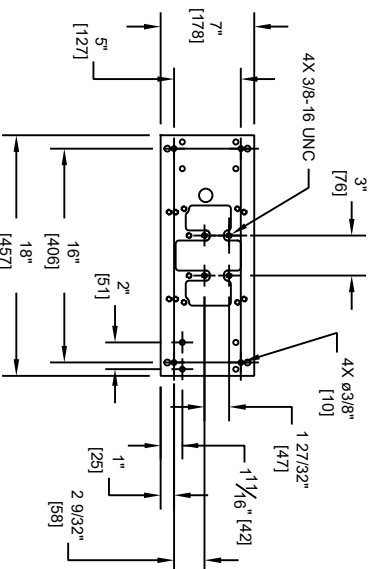
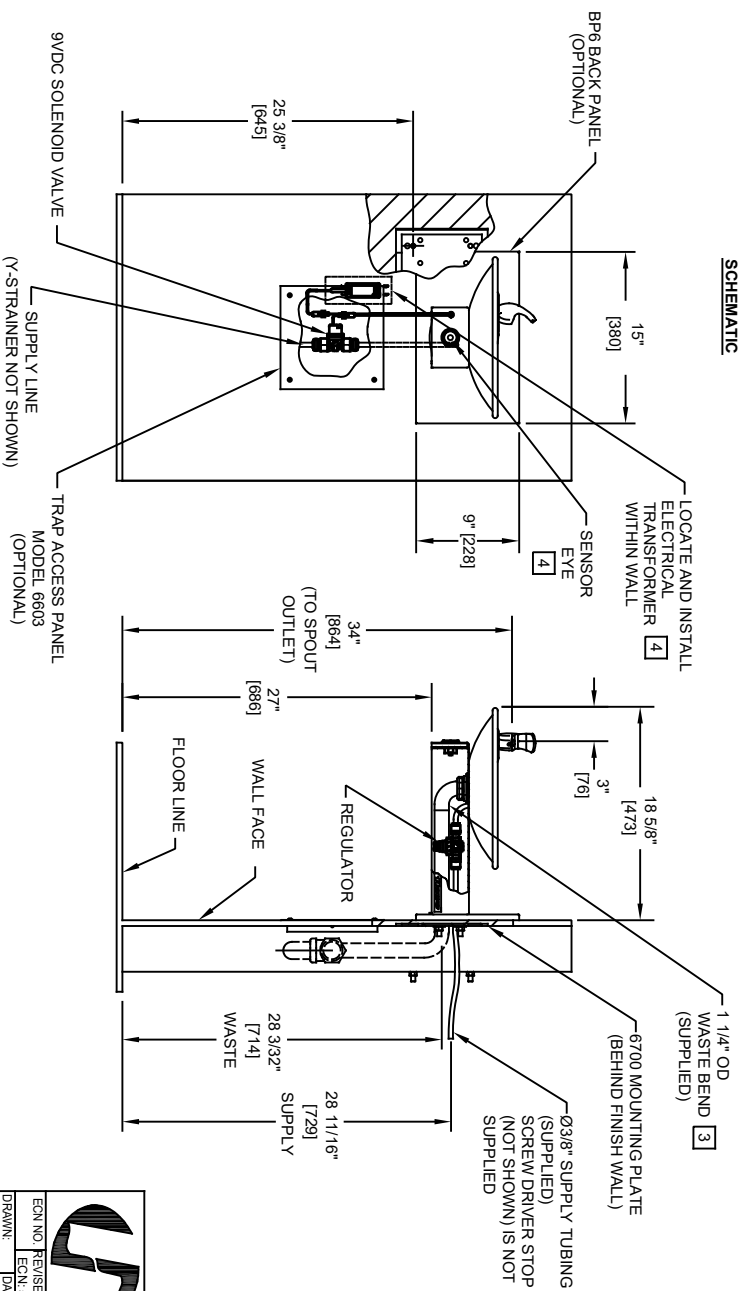
		MODEL(S)	
1456 KLEPPE LANE SPARKS, NEVADA 89431 (775) 359-4712 FAX (775) 359-7424 E-MAIL: HAWKS@HAWSCO.COM WEBSITE: WWW.HAWSCO.COM		H1001, 8/H1001, 8HPS	
ECN NO. REVISED PER BY:	MODEL(S)	ECN NO.	REVISED PER BY:
00002080246.D		5527	EV
DATE:	CHK'D:	DATE:	CHK'D:
07/21/97	DP		
APPROVED:	SCALE:	1:15	DRAWING TYPE:
EV	04/02/20		INSTALLATION
	SIZE:	A	SHEET:
			1 OF 1
	REVISION:		20

NOTES:

1. HOLD ROUGH-IN DIMENSIONS $\pm 1/8"$ (3.2mm).
2. WHEN INSTALLING THIS UNIT, LOCAL, STATE, OR FEDERAL CODES SHOULD BE ADHERED TO FOR INSTALLATION DIMENSIONS (LOCATIONS), WASTE AND SUPPLY REQUIREMENTS OTHER THAN SHOWN.
3. INSTALLER MUST PROVIDE TRAP FOR PROPER INSTALLATION.
4. REFER TO 1RKH01H OPERATION AND MAINTENANCE INSTRUCTIONS FOR TRANSFORMER AND SENSOR SETUP.



SECTION A-A
ROTATED 90° INTO VIEW
BRACKET MOUNTING
DETAIL



Haws

1456 KLEPPE LANE
SPARKS, NEVADA 89431
(775) 359-4712 FAX (775) 359-7424
E-MAIL: HAWSON@HAWSON.COM
WEBSITE: WWW.HAWSON.COM

ECN NO. REVISED PERBY: MODEL(S)
DRAWN: ECN: 5733 FV: DATE: CHK'D: FV: DATE: BLM: 1001HO
APPROVED: ECN: 5733 FV: DATE: BLM: 09/28/21 1001HO
SCALE: 1:1 DRAWING TYPE: INSTALLATION SHEET 1 OF 1