



We Know Water.

SURFACE MOUNT AQUA POINTE™ SPORTS BOTTLE FILLER

• **MWSMGSBF** • **MWSMG8SBF** • **MWSMG12SBF**

Suggested Specification

Model MWSMG8SBF shall deliver 8.0 gph of 50°F water at 90°F ambient and 80°F inlet water per ASHRAE 18 testing. Model MWSMG12SBF shall deliver 12.0 gph of 50°F water at 90°F ambient and 80°F inlet water per ASHRAE 18 testing. Model MWSMGSBF is a non-refrigerated unit. Shall be surface mount in design. Water flow to the bottler filler is by means of an manually activated push button. Shall include the Aqua Pointe™ Bottle Filler with mechanical activation and laminar flow. Bottle Filler alcove and cabinet finish shall be stainless steel. Key Aqua Pointe™ bottle filler components contain Freshield®, which utilizes a silver-based antimicrobial compound to protect the surfaces from discoloration, odors and degradation caused by the growth of micro-organisms and mildew. Shall use R-134a refrigerant. Shall comply with ANSI 117.1 and ADA. Shall be listed by Underwriters Laboratories to US and Canadian standards. Shall comply with NSF/ANSI 61 and NSF/ANSI 372.



	MWSMG8SBF	MWSMG12SBF	MWSMGSBF
Features:	<ul style="list-style-type: none"> Built-in 100 micron strainer stops particles before they enter the waterway Waterways are Lead-Free in materials & construction High efficiency cooling system Heavy duty galvanized steel frame Manually activated water flow Logos permanently formed into the alcove and stainless steel wrapper Built in panel locks for easy access to chiller and filtration if applicable 		
Filtration:	Option to add filtration		
Power:	115 Volts, 60 Hz		
Activation By:	Manual Push Button		
Mounting Type:	In Wall		
Chilling Option:	8.0 gph*	12.0 gph*	Non-Refrigerated
Full Load Amps:	5.0 amps	5.5 amps	0 amps
Rated Watts:	500	550	0
Approx. Net Weight:	96 lbs	100 lbs	47 lbs
Installation Location:	Indoor		

Installation

- Prior to rough-in consult with local, state and federal codes for proper mounting height
- Shipped with complete instructions
- Recessed mounting frame included, but water supply and drain required

Finishes

- Standard cabinet finish: Stainless steel

Options

- OASIS Versafilter III Kit 041253-001

Limited 5-Year Warranty

(Continental limits of the United States and Canada)
Five years on the sealed refrigeration system and most component parts. Detailed warranty certificate enclosed with each water cooler; sample available upon request.

Export Warranty

One year on components parts. Detailed warranty certificate enclosed with each drinking fountain; sample copy available upon request.

Certifications/Compliance

- Certified to UL 399 and CAN/CSA C22.2 No.120 (electric water coolers only)
- Product Certified to NSF/ANSI Standard 61-G & 372 and conforms with the lead content requirements for "Lead Free" plumbing as defined by California, Vermont, Maryland, and Louisiana state laws and the U.S. Safe Drinking Water Act
- These water coolers comply with the requirements of ADA (Americans with Disabilities Act) when properly installed



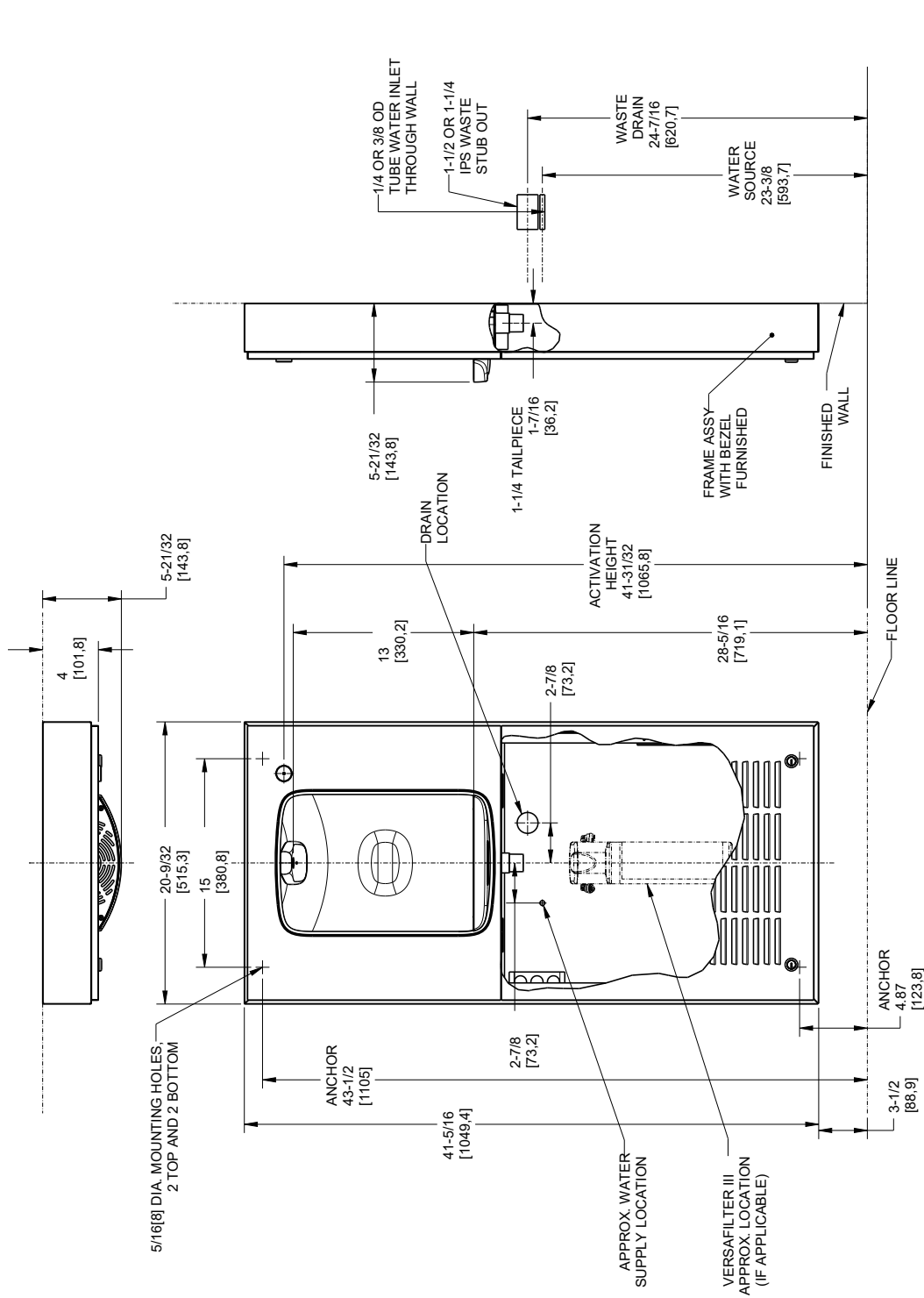
WARNING:
Cancer and Reproductive Harm
www.P65Warnings.ca.gov



*Industry standard rating condition at 90°F ambient, 80°F inlet water and 50°F drinking water temperature

Specifications subject to change without notice

SURFACE MOUNT AQUA POINTE™ SPORTS BOTTLE FILLER



NOTES:

1. RECOMMENDED ADULT HEIGHT INSTALLATION SHOWN. ADJUST VERTICAL DIMENSIONS AS REQUIRED TO COMPLY WITH FEDERAL, STATE AND LOCAL CODES.
2. STOP VALVE, TRAP, PIPE CONNECTOR TO WASTE LINE NOT PROVIDED. SHORT RADIUS TRAP REQUIRED.
3. ALL DIMENSIONS ARE IN INCHES. DIMENSIONS IN [] ARE IN MILLIMETERS.
4. 115V GROUNDED NORTH AMERICAN DUPLEX RECEPTACLE REQUIRED. THIS DRINKING WATER COOLER IS INTENDED TO BE CONNECTED TO A 20A MINIMUM GROUND FAULT CIRCUIT INTERRUPTING (GFCI) DEVICE TO MEET UL REQUIREMENTS.
5. CHILLER, IF APPLICABLE, MUST BE ADEQUATELY SUPPORTED BY SOMETHING OTHER THAN THE FRAME.
6. FILTER INSTALLATION LOCATIONS WILL VARY BY MODEL.