



We Know Water.

WALL-MOUNTED REFRIGERATED BOTTLE FILLER

- **PGN8EBF**

Suggested Specification

Model PGN8EBF shall deliver 8.0 gph of 50°F water at 90°F ambient and 80°F inlet water per ASHRAE 18 testing. Electronic bottle filler shall include contactless activation and laminar flow. Model PGN8EBF shall be surface mount in design. Plastic bottle filler components contain Freshield®, which utilizes a silver-based antimicrobial compound to protect the surfaces from discoloration, odors and degradation caused by the growth of micro-organisms and mildew. Shall use R-134a refrigerant. Shall comply with ANSI 117.1 and ADA. Shall be listed by Underwriters Laboratories to US and Canadian standards, and comply with NSF/ANSI 61 and NSF/ANSI 372.

Features:

- High efficiency cooling system
- Contactless activation
- Built-in 100 micron strainer stops particles before they enter the waterway
- Stainless steel with heavy duty galvanized steel frame
- Waterways are lead-free in materials & construction
- Built-in filter monitor and bottle counter
- Ample space within the bottle filler cabinet to add filtration
- Access through the side of the bottle filler cabinet for clean and easy replacement of filters

Filtration:	Option to add filtration to bottle filler cabinet
Power:	115 Volts, 60 Hz
Activation By:	Contactless Sensor
Mounting Type:	Wall Mounted
Chilling Option:	8.0 gph
Full Load Amps:	4.6
Rated Watts:	460
Dimensions (D x W x H):	12.7" x 17.9" x 36.8"
Approx. Net Weight:	56 lbs
Installation Location:	Indoor



Installation

- Prior to roughing in, consult with local, state and federal codes for proper mounting height
- Shipped with complete instructions and wall mounting bracket

Options

- OASIS VersaFilter

Limited 5-Year Warranty

(Continental limits of the United States and Canada)

Five years on the sealed refrigeration system and most component parts. Detailed warranty certificate enclosed with each bottle filler; sample available upon request.

Export Warranty

One year on component parts. Detailed warranty certificate enclosed with each bottle filler; sample copy available upon request.

Compliance

- Certified to UL 399 and CAN/CSA C22.2 No. 120
- Product Certified to NSF/ANSI Standard 61-G & 372 and conforms with the lead content requirements for "Lead Free" plumbing as defined by California, Vermont, Maryland, and Louisiana state laws and the U.S. Safe Drinking Water Act
- Complies with the requirements of ADA (Americans with Disabilities Act) when properly installed



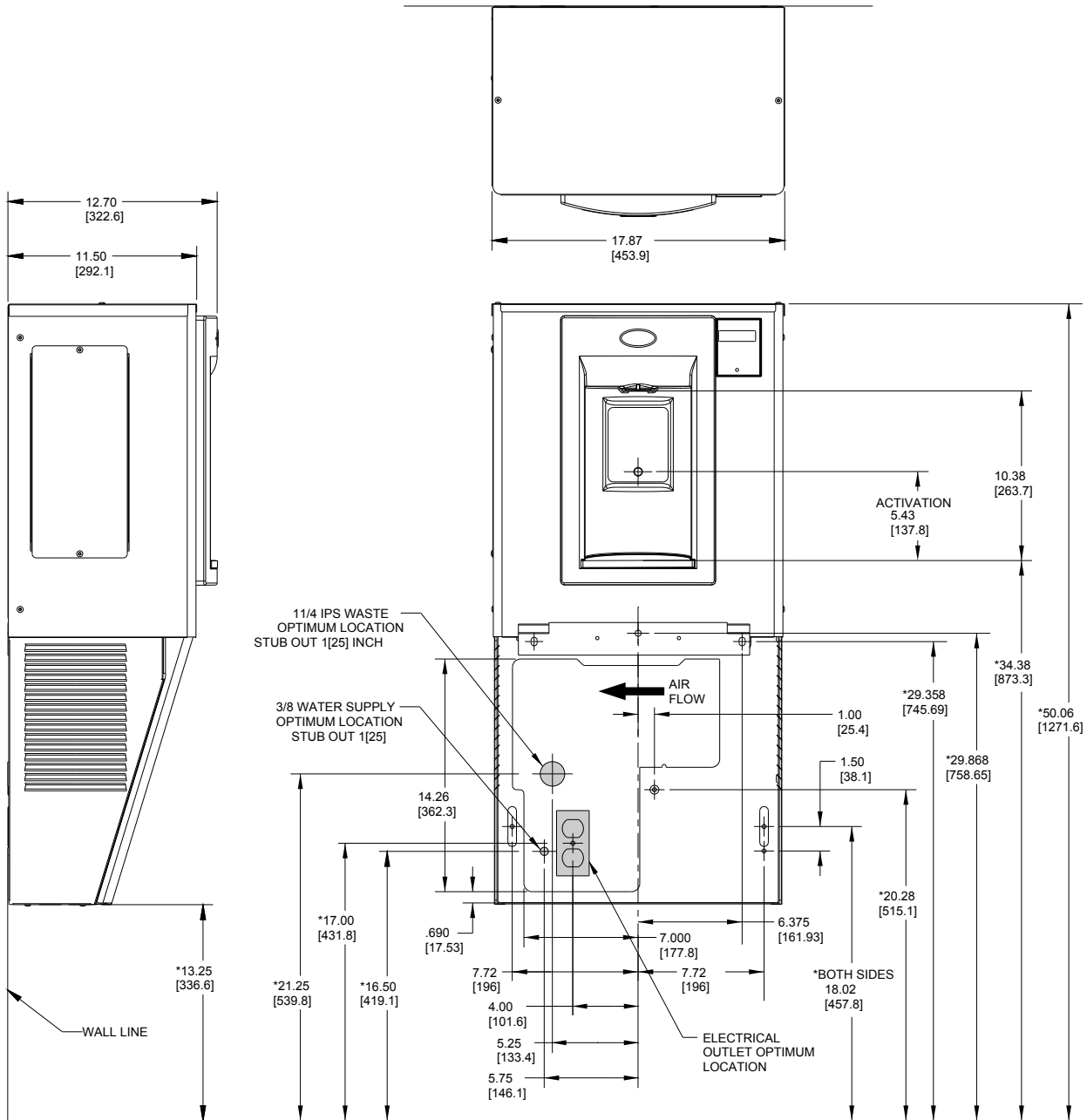
WARNING:
Cancer and Reproductive Harm
www.P65Warnings.ca.gov



*Industry standard rating condition at 90°F ambient, 80°F inlet water and 50°F drinking water temperature

Specifications subject to change without notice

WALL MOUNTED REFRIGERATED BOTTLE FILLER



NOTES:

1. TRAP, STOP VALVE AND ELECTRICAL OUTLET NOT FURNISHED.
2. ALLOW 4 INCHES [102MM] MIN. PER SIDE FOR VENTILATION.
- *3. RECOMMENDED ADULT BARRIER FREE HEIGHT INSTALLATION SHOWN. REDUCE HEIGHT BY 3 INCHES FOR INSTALLATIONS USED PRIMARILY BY CHILDREN AGES 12 AND YOUNGER. UNIT SHALL ALSO HAVE A MINIMUM CLEAR FLOOR SPACE 30[760] BY 48[1220]. ADJUST VERTICAL DIMENSIONS AS REQ'D TO COMPLY WITH FEDERAL, STATE, AND LOCAL CODES.
4. ALL DIMENSIONS ARE IN INCHES. DIMENSIONS IN BRACKETS [] ARE IN MILLIMETERS.